

pyxis

ROBOTIC SURGICAL PLATFORM



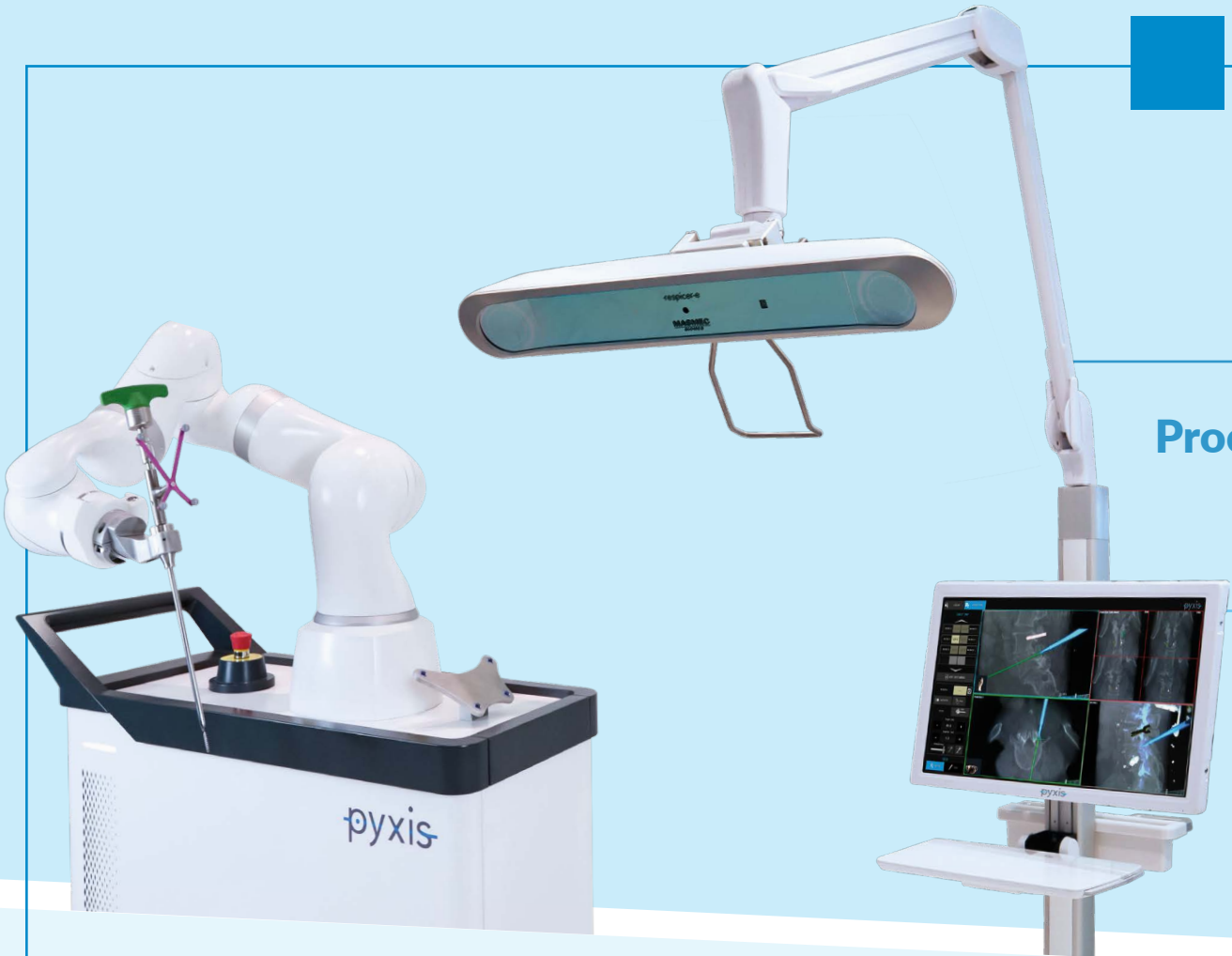
MASMEC
BIOMED

MASMEC S.p.A. - Biomed Division
Via delle Violette, 14
70026 Modugno (BA) - Italy
www.masmeobiomed.com

MASMEC
BIOMED

Moving spine surgery forward

Pyxis combines the precision of navigation with the stability of a robotic arm to support surgeons during spinal surgery.



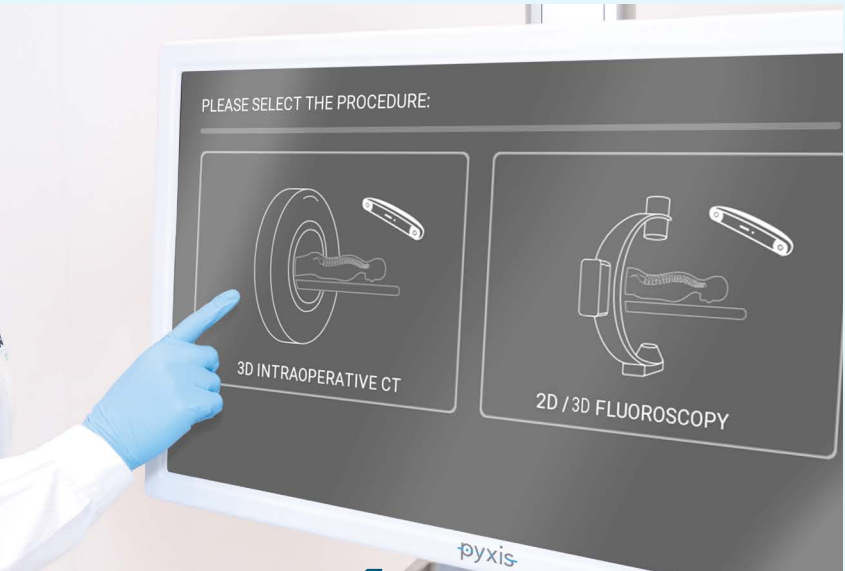
Alignment with planning

Procedure standardization

Control, accuracy, and efficiency

4 stages, one platform

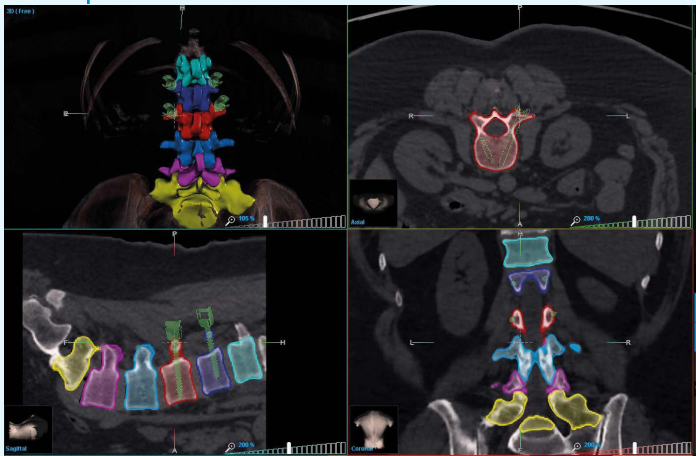
IMAGING



1

Pyxis is a flexible platform, which is compatible with all 2D and 3D radiological imaging systems.

PLANNING



2

The surgeon defines each patient's surgical plan pre-operatively, using a set of tools to visualise and segment areas of interest.

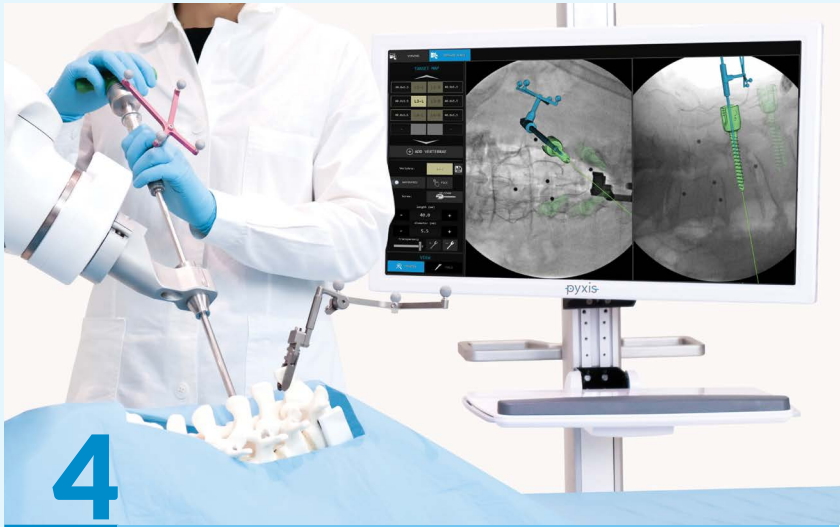
ALIGNMENT

The robotic arm automatically aligns with the trajectories that the surgeon has planned in the navigation environment.

3



NAVIGATION



4

As the robot ensures stable positioning of instruments, the surgeon can focus on implant navigation and procedure.

They can monitor implants and instruments in real time with the navigation system.