

Product Information

Implants

Oblique Lateral Interbody Fusion Cage(OLIF)

PEEK REF.NO.	Titanium REF.NO.	Length (mm)	Width (mm)	Height (mm)	Angles (°)
096045009S -096045017S	097590509- 097590517	40	18	9-17	5°
096041011S -096041019S	097591011- 097591019	40	18	11-19	10°
096042012S -096042019S	097592012- 097592019	40	18	12-19	20°
096065009S- 096065017S	097600509- 097600517	45	18	9-17	5°
096061011S- 096061019S	097601011- 097601019	45	18	11-19	10°
096062012S- 096062019S	097602012- 097602019	45	18	12-19	20°
096085009S- 096085017S	097610509- 097610517	50	18	9-17	5°
096081011S- 096081019S	097611011- 097611019	50	18	11-19	10°
096082012S- 096082019S	097612012- 097612019	50	18	12-19	20°
096105009S- 096105017S	097620509- 097620517	55	18	9-17	5°
096101011S- 096101019S	097621011- 097621019	55	18	11-19	10°
096102012S- 096102019S	097622012- 097622019	55	18	12-19	20°
096125009S- 096125017S	097630509- 097630517	60	18	9-17	5°
096121011S- 096121019S	097631011- 097631019	60	18	11-19	10°
096122012S- 096122019S	097632012- 097632019	60	18	12-19	20°

OLIF Plate

REF.NO.	Spec./Qty
096150000	small
096180000	large

Locking Screw for OLIF Plate, self-drilling, variable angle

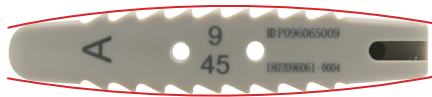
REF.NO.	Spec./Qty
096225520-096225550	φ5.5×20-φ5.5×50 (5mm increments)
096226020-096226050	Φ6.0×20-Φ6.0×50(5mm increments)

Locking Screw for OLIF Plate, self-drilling, fixed angle

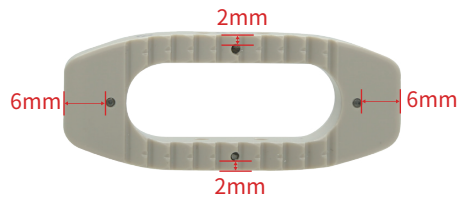
REF.NO.	Spec./Qty
097085520-097085550	φ5.5×20-φ5.5×50 (5mm increments)
097086020-097086050	Φ6.0×20-Φ6.0×50(5mm increments)

Oblique Lateral Interbody Fusion Cage(OLIF)





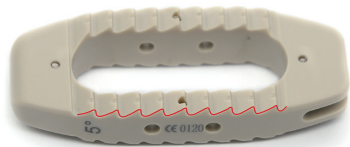
- Anatomical Design



- Four radiographic marker pins enable the visualization of the implant position. The inner/outer marker pin is about 6mm away from the implant edge. The anterior/posterior marker pin is about 2mm away from the implant edge.

- Large Central Window

Accommodates autogenous bone graft or bone graft substitute to allow fusion to occur through the cage.



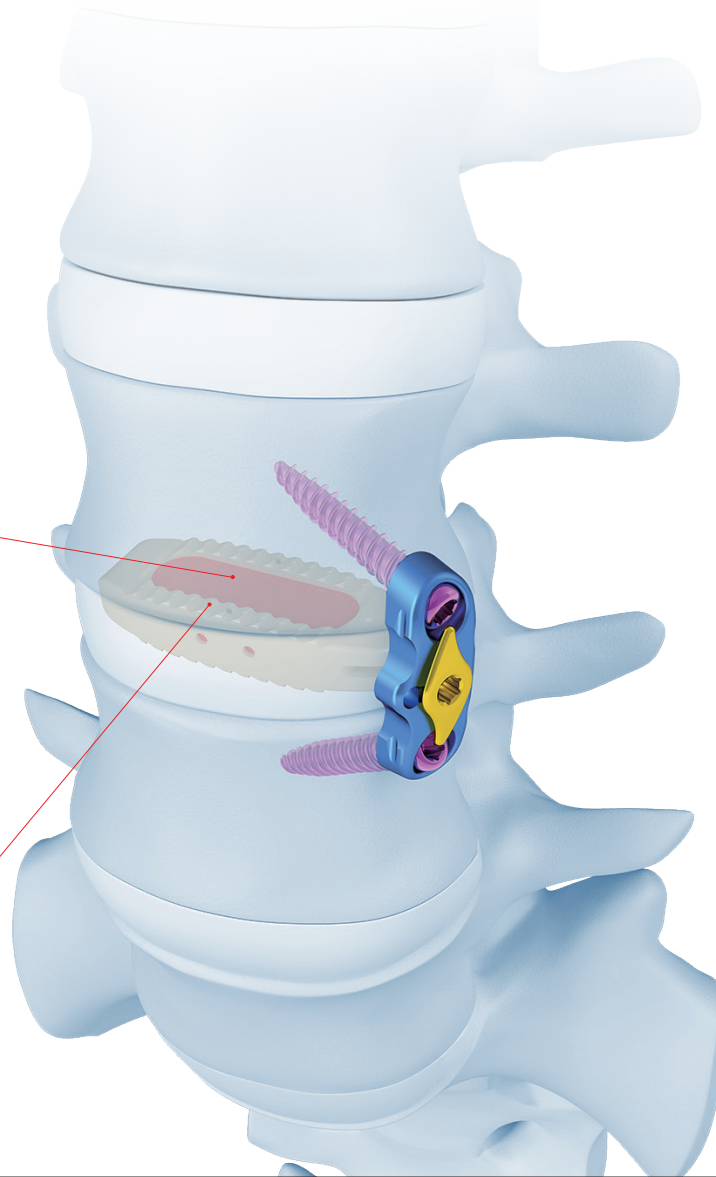
- Pyramidal Teeth Design

The pyramidal teeth design increase the resistance and reduce the risk of cage migration.



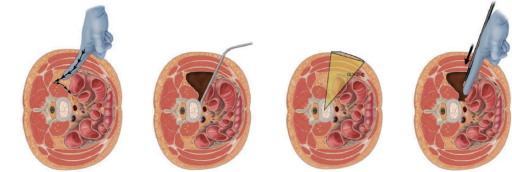
- Three lordotic angles

5°, 10° and 20° Restore spinal physiological lordosis.



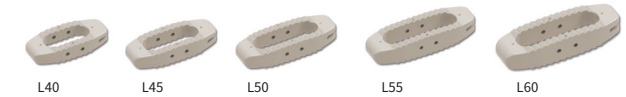
- Approach

OLIF cage is inserted through the lumbar oblique lateral approach. The oblique lateral approach is a minimally invasive approach that avoids the anterior blood vessels, posterior nerves and the bony structures.



- Features & Advantages

OLIF cage could meet the special requirements of lumbar oblique lateral interbody fusion. The implants have 5 lengths and 11 heights.



- PEEK and Titanium OLIF are available

- PEEK OLIF Cage is supplied sterilized.
- Titanium OLIF Cage is color coding for different lengths (L40, L45, L50, L55 and L60), which eases surgeon's identification.



Indications

Lumbar vertebrae diseases with indicated spondylosis, for example:

- Degenerative disc diseases and spinal instabilities
- Revision procedures for post-discectomy syndrome
- Pseudoarthrosis or failed spondylosis
- Degenerative spondylolisthesis
- Spondylolytic spondylolisthesis

Contraindications

- Vertebral fractures
- Spinal tumors
- Severe spinal instabilities
- Primary spinal deformity

Warning

This flyer is just for understanding the specific product features. For clinical usage, please refer to the surgical guide. Instruction by experienced surgeon is highly recommended.