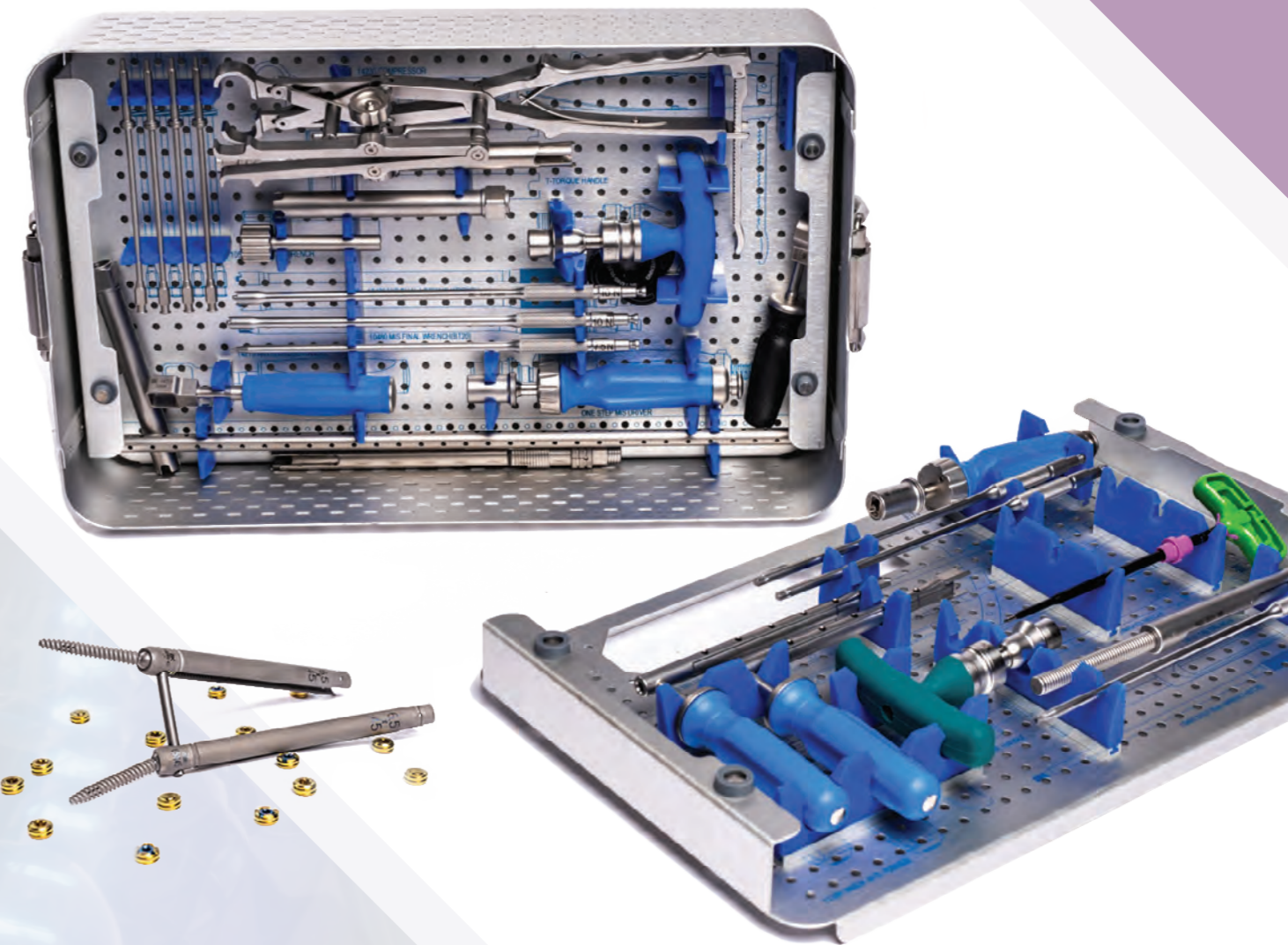
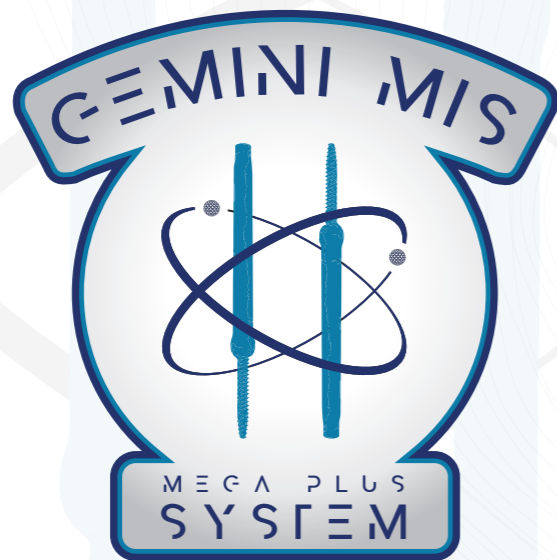


GEMINI MIS
MEGA PLUS SYSTEM



BK MEDITECH
USA

6671 S. Las Vegas Blvd, Bldg D
Las Vegas, NV 89119
Tel: (888) 755-1487
Email: info@bkmeditechusa.com
<https://www.BKMEDITECHUSA.com>



www.BKMeditechUSA.com

BK MEDITECH
USA

www.BKMeditechUSA.com



Inspired by the establishment of National Aeronautics and Space Aviation (NASA), and their relentless pursuit to outer space exploration for the betterment of humankind, BK MediTech® USA introduces our NASA inspired surgical systems based on the same principles of exploration to advance our pioneering technologies to the inner space of the human body to solve issues of the complex spine.

Project Gemini was NASA's second human spaceflight program designed to develop sophisticated, precision-based, techniques of travel to be used for landing on the moon. Bk MediTech® USA launches its second comprehensive system, focused on the growing sector of the minimally invasive technique, called the Gemini MIS System. Inspired by the same name and meaning, the Gemini MIS System was specifically designed for the precise navigation of muscle tissue through a smaller incision, and viewing port, featuring a proprietary "direct to screw" instrumentation technology, and utilizing the BioAccel RST (Roughened Surface Technology).

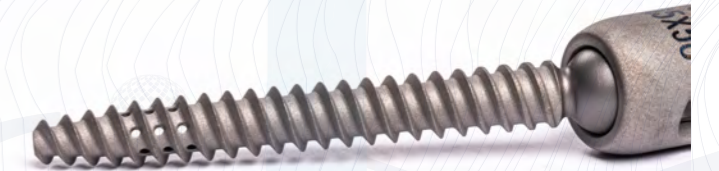
BioAccel RST™ (Roughened Surface Technology)

BK MediTech® USA's pioneering screw technology in the field of complex spine, trauma, and minimally invasive spine, called BioAccel RST™ (Roughened Surface Technology), applies our proprietary methods of resorbable blast media (RBM) to achieve highly textured screw system surfaces. Through the application of our unique high temperature/high pressure method, we have created a special implant surface treatment using a Hydroxyapatite based biological accelerant which impregnate micro-particles into the surface of the titanium floor of our screw systems using a high strain blasting technique to achieve a remarkable surface roughness on a microscopic level.

In 2008, Boyer, et al, conducted and published the paper Effects of Micrometer-Scale Roughness of the Surface of Ti 6A14V Pedicle Screws in Vitro and in Vivo. This randomized sheep study compared the osteointegration of smooth surface vs . grit- blasted roughened surface screws.

Features & Benefits

- Cannulated and Fenestrated MIS Screws
- MIS Screw Tower Stabilizer
- Top-loading, Top-tightening, Self-tapping screws
- Head Diameter: 13.5mm
- Up to 60 degrees of angulation
- Dual lead thread pattern for faster insertion
- Accommodate both 5.5 and *6.0 rods
- Multi-Axial to Mono Axial heads
- Choice of dual or single locking bolt



Poly-to-Mono Locking Pedicle Screw Heads

Polyaxial heads can lock to monoaxial. With the use of a 2-piece locking bolt, parallel compression, distraction and derotation maneuvers can be applied. This screw design eliminate need for mono-axial or uniplanar screws.

2-piece and 1-piece Locking Bolts

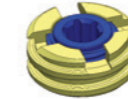
- Modified square thread design: Minimizes head splay and cross-threading
- Two type of locking bolts (2-piece or 1-piece)
- Hexalobular Torx drive fittings

Locking Bolt



Part Number.
93110

Dual Locking Bolt



Part Number.
93120





5.5mm Rod MIS Cannulated Screw

Part Number	"D" (Thread Diameter, mm)									
	Ø 4.5	Ø 5.0	Ø 5.5	Ø 6.0	Ø 6.5	Ø 7.0	Ø 7.5	Ø 8.5	Ø 9.5	Ø 10.5
69145-20										
69145-25	69150-25	69155-25								
69145-30	69150-30	69155-30	69160-30	69165-30	69170-30	69175-30	69185-30	69195-30	69105-30	
69145-35	69150-35	69155-35	69160-35	69165-35	69170-35	69175-35	69185-35	69195-35	69105-35	
69145-40	69150-40	69155-40	69160-40	69165-40	69170-40	69175-40	69185-40	69195-40	69105-40	
69145-45	69150-45	69155-45	69160-45	69165-45	69170-45	69175-45	69185-45	69195-45	69105-45	
69145-50	69150-50	69155-50	69160-50	69165-50	69170-50	69175-50	69185-50	69195-50	69105-50	
	69150-55	69155-55	69160-55	69165-55	69170-55	69175-55	69185-55	69195-55	69105-55	
		69155-60	69160-60	69165-60	69170-60	69175-60	69185-60	69195-60	69105-60	
							69185-65	69195-65	69105-65	
							69185-70	69195-70	69105-70	
							69185-75	69195-75	69105-75	
							69185-80	69195-80	69105-80	
							69185-85	69195-85	69105-85	
							69185-90	69195-90	69105-90	
							69185-95	69195-95	69105-95	
							69185-100	69195-100	69105-100	

6.0mm Rod MIS Cannulated Screw

Part Number	"D" (Thread Diameter, mm)									
	Ø 4.5	Ø 5.0	Ø 5.5	Ø 6.0	Ø 6.5	Ø 7.0	Ø 7.5	Ø 8.5	Ø 9.5	Ø 10.5
69645-20										
69645-25	69650-25	69655-25								
69645-30	69650-30	69655-30	69660-30	69665-30	69670-30	69675-30	69685-30	69695-30	69605-30	
69645-35	69650-35	69655-35	69660-35	69665-35	69670-35	69675-35	69685-35	69695-35	69605-35	
69645-40	69650-40	69655-40	69660-40	69665-40	69670-40	69675-40	69685-40	69695-40	69605-40	
69645-45	69650-45	69655-45	69660-45	69665-45	69670-45	69675-45	69685-45	69695-45	69605-45	
69645-50	69650-50	69655-50	69660-50	69665-50	69670-50	69675-50	69685-50	69695-50	69605-50	
	69650-55	69655-55	69660-55	69665-55	69670-55	69675-55	69685-55	69695-55	69605-55	
		69655-60	69660-60	69665-60	69670-60	69675-60	69685-60	69695-60	69605-60	
							69685-65	69695-65	69605-65	
							69685-70	69695-70	69605-70	
							69685-75	69695-75	69605-75	
							69685-80	69695-80	69605-80	
							69685-85	69695-85	69605-85	
							69685-90	69695-90	69605-90	
							69685-95	69695-95	69605-95	
							69685-100	69695-100	69605-100	



5.5mm Rod MIS Fenestrated Screw

Part Number	"D" (Thread Diameter, mm)									
	Ø 4.5	Ø 5.0	Ø 5.5	Ø 6.0	Ø 6.5	Ø 7.0	Ø 7.5	Ø 8.5	Ø 9.5	Ø 10.5
69245-20										
69245-25	69250-25	69255-25								
69245-30	69250-30	69255-30	69260-30	69265-30	69270-30	69275-30	69285-30	69295-30	69205-30	
69245-35	69250-35	69255-35	69260-35	69265-35	69270-35	69275-35	69285-35	69295-35	69205-35	
69245-40	69250-40	69255-40	69260-40	69265-40	69270-40	69275-40	69285-40	69295-40	69205-40	
69245-45	69250-45	69255-45	69260-45	69265-45	69270-45	69275-45	69285-45	69295-45	69205-45	
69245-50	69250-50	69255-50	69260-50	69265-50	69270-50	69275-50	69285-50	69295-50	69205-50	
	69250-55	69255-55	69260-55	69265-55	69270-55	69275-55	69285-55	69295-55	69205-55	
		69255-60	69260-60	69265-60	69270-60	69275-60	69285-60	69295-60	69205-60	
							69285-65	69295-65	69205-65	
							69285-70	69295-70	69205-70	
							69285-75	69295-75	69205-75	
							69285-80	69295-80	69205-80	
							69285-85	69295-85	69205-85	
							69285-90	69295-90	69205-90	
							69285-95	69295-95	69205-95	
							69285-100	69295-100	69205-100	

6.0mm Rod MIS Fenestrated Screw

Part Number	"D" (Thread Diameter, mm)									
	Ø 4.5	Ø 5.0	Ø 5.5	Ø 6.0	Ø 6.5	Ø 7.0	Ø 7.5	Ø 8.5	Ø 9.5	Ø 10.5
69745-20										
69745-25	69750-25	69755-25								
69745-30	69750-30	69755-30	69760-30	69765-30	69770-30	69775-30	69785-30	69795-30	69705-30	
69745-35	69750-35	69755-35	69760-35	69765-35	69770-35	69775-35	69785-35	69795-35	69705-35	
69745-40	69750-40	69755-40	69760-40	69765-40	69770-40	69775-40	69785-40	69795-40	69705-40	
69745-45	69750-45	69755-45	69760-45	69765-45	69770-45	69775-45	69785-45	69795-45	69705-45	
69745-50	69750-50	69755-50	69760-50	69765-50	69770-50	69775-50	69785-50	69795-50	69705-50	
	69750-55	69755-55	69760-55	69765-55	69770-55	69775-55	69785-55	69795-55	69705-55	
		69755-60	69760-60	69765-60	69770-60	69775-60	69785-60	69795-60	69705-60	
							69785-65	69795-65	69705-65	
							69785-70	69795-70	69705-70	
							69785-75	69795-75	69705-75	
							69785-80	69795-80	69705-80	
							69785-85	69795-85	69705-85	
							69785-90	69795-90	69705-90	
							69785-95	69795-95	69705-95	
							69785-100	69795-100	69705-100	



5.5mm Rod MIS Cannulated Screw, Short

Part Number	"D" (Thread Diameter, mm)									
	Ø 4.5	Ø 5.0	Ø 5.5	Ø 6.0	Ø 6.5	Ø 7.0	Ø 7.5	Ø 8.5	Ø 9.5	Ø 10.5
69445-20										
69445-25	69450-25	69455-25								
69445-30	69450-30	69455-30	69460-30	69465-30	69470-30	69475-30	69485-30	69495-30	69405-30	
69445-35	69450-35	69455-35	69460-35	69465-35	69470-35	69475-35	69485-35	69495-35	69405-35	
69445-40	69450-40	69455-40	69460-40	69465-40	69470-40	69475-40	69485-40	69495-40	69405-40	
69445-45	69450-45	69455-45	69460-45	69465-45	69470-45	69475-45	69485-45	69495-45	69405-45	
69445-50	69450-50	69455-50	69460-50	69465-50	69470-50	69475-50	69485-50	69495-50	69405-50	
	69450-55	69455-55	69460-55	69465-55	69470-55	69475-55	69485-55	69495-55	69405-55	
		69455-60	69460-60	69465-60	69470-60	69475-60	69485-60	69495-60	69405-60	
							69485-65	69495-65	69405-65	
							69485-70	69495-70	69405-70	
							69485-75	69495-75	69405-75	
							69485-80	69495-80	69405-80	
							69485-85	69495-85	69405-85	
							69485-90	69495-90	69405-90	
							69485-95	69495-95	69405-95	
							69485-100	69495-100	69405-100	

6.0mm Rod MIS Cannulated Screw, Short

Part Number	"D" (Thread Diameter, mm)									
	Ø 4.5	Ø 5.0	Ø 5.5	Ø 6.0	Ø 6.5	Ø 7.0	Ø 7.5	Ø 8.5	Ø 9.5	Ø 10.5
69845-20										
69845-25	69850-25	69855-25								
69845-30	69850-30	69855-30	69860-30	69865-30	69870-30	69875-30	69885-30	69895-30	69805-30	
69845-35	69850-35	69855-35	69860-35	69865-35	69870-35	69875-35	69885-35	69895-35	69805-35	
69845-40	69850-40	69855-40	69860-40	69865-40	69870-40	69875-40	69885-40	69895-40	69805-40	
69845-45	69850-45	69855-45	69860-45	69865-45	69870-45	69875-45	69885-45	69895-45	69805-45	
69845-50	69850-50	69855-50	69860-50	69865-50	69870-50	69875-50	69885-50	69895-50	69805-50	
	69850-55	69855-55	69860-55	69865-55	69870-55	69875-55	69885-55	69895-55	69805-55	
		69855-60	69860-60	69865-60	69870-60	69875-60	69885-60	69895-60	69805-60	
							69885-65	69895-65	69805-65	
							69885-70	69895-70	69805-70	
							69885-75	69895-75	69805-75	
							69885-80	69895-80	69805-80	
							69885-85	69895-85	69805-85	
							69885-90	69895-90	69805-90	
							69885-95	69895-95	69805-95	
							69885-100	69895-100	69805-100	



5.5mm Rod MIS Fenestrated Screw, Short

Part Number	"D" (Thread Diameter, mm)									
	Ø 4.5	Ø 5.0	Ø 5.5	Ø 6.0	Ø 6.5	Ø 7.0	Ø 7.5	Ø 8.5	Ø 9.5	Ø 10.5
69545-20										
69545-25	69550-25	69555-25								
69545-30	69550-30	69555-30	69560-30	69565-30	69570-30	69575-30	69585-30	69595-30	69505-30	
69545-35	69550-35	69555-35	69560-35	69565-35	69570-35	69575-35	69585-35	69595-35	69505-35	
69545-40	69550-40	69555-40	69560-40	69565-40	69570-40	69575-40	69585-40	69595-40	69505-40	
69545-45	69550-45	69555-45	69560-45	69565-45	69570-45	69575-45	69585-45	69595-45	69505-45	
69545-50	69550-50	69555-50	69560-50	69565-50	69570-50	69575-50	69585-50	69595-50	69505-50	
	69550-55	69555-55	69560-55	69565-55	69570-55	69575-55	69585-55	69595-55	69505-55	
		69555-60	69560-60	69565-60	69570-60	69575-60	69585-60	69595-60	69505-60	
							69585-65	69595-65	69505-65	
							69585-70	69595-70	69505-70	
							69585-75	69595-75	69505-75	
							69585-80	69595-80	69505-80	
							69585-85	69595-85	69505-85	
							69585-90	69595-90	69505-90	
							69585-95	69595-95	69505-95	
							69585-100	69595-100	69505-100	

6.0mm Rod MIS Fenestrated Screw, Short

Part Number	"D" (Thread Diameter, mm)									
	Ø 4.5	Ø 5.0	Ø 5.5	Ø 6.0	Ø 6.5	Ø 7.0	Ø 7.5	Ø 8.5	Ø 9.5	Ø 10.5
69945-20										
69945-25	69950-25	69955-25								
69945-30	69950-30	69955-30	69960-30	69965-30	69970-30	69975-30	69985-30	69995-30	69905-30	
69945-35	69950-35	69955-35	69960-35	69965-35	69970-35	69975-35	69985-35	69995-35	69905-35	
69945-40	69950-40	69955-40	69960-40	69965-40	69970-40	69975-40	69985-40	69995-40	69905-40	
69945-45	69950-45	69955-45	69960-45	69965-45	69970-45	69975-45	69985-45	69995-45	69905-45	
69945-50	69950-50	69955-50	69960-50	69965-50	69970-50	69975-50	69985-50	69995-50	69905-50	
	69950-55	69955-55	69960-55	69965-55	69970-55	69975-55	69985-55	69995-55	69905-55	
		69955-60	69960-60	69965-60	69970-60	69975-60	69985-60	69995-60	69905-60	
							69985-65	69995-65	69905-65	
							69985-70	69995-70	69905-70	
							69985-75	69995-75	69905-75	
							69985-80	69995-80	69905-80	
							69985-85	69995-85	69905-85	
							69985-90	69995-90	69905-90	
							69985-95	69995-95	69905-95	
							69985-100	69995-100	69905-100	



5.5mm Rod Multi-axial Cannulated Screw

Part Number	"D" (Thread Diameter, mm)									
	Ø 4.5	Ø 5.0	Ø 5.5	Ø 6.0	Ø 6.5	Ø 7.0	Ø 7.5	Ø 8.5	Ø 9.5	Ø 10.5
94645-20										
94645-25	94650-25	94655-25								
94645-30	94650-30	94655-30	94660-30	94665-30	94670-30	94675-30	94685-30	94695-30	94605-30	
94645-35	94650-35	94655-35	94660-35	94665-35	94670-35	94675-35	94685-35	94695-35	94605-35	
94645-40	94650-40	94655-40	94660-40	94665-40	94670-40	94675-40	94685-40	94695-40	94605-40	
94645-45	94650-45	94655-45	94660-45	94665-45	94670-45	94675-45	94685-45	94695-45	94605-45	
94645-50	94650-50	94655-50	94660-50	94665-50	94670-50	94675-50	94685-50	94695-50	94605-50	
	94650-55	94655-55	94660-55	94665-55	94670-55	94675-55	94685-55	94695-55	94605-55	
		94655-60	94660-60	94665-60	94670-60	94675-60	94685-60	94695-60	94605-60	
							94685-65	94695-65	94605-65	
							94685-70	94695-70	94605-70	
							94685-75	94695-75	94605-75	
							94685-80	94695-80	94605-80	
							94685-85	94695-85	94605-85	
							94685-90	94695-90	94605-90	
							94685-95	94695-95	94605-95	
							94685-100	94695-100	94605-100	

6.0mm Rod Multi-axial Cannulated Screw

Part Number	"D" (Thread Diameter, mm)									
	Ø 4.5	Ø 5.0	Ø 5.5	Ø 6.0	Ø 6.5	Ø 7.0	Ø 7.5	Ø 8.5	Ø 9.5	Ø 10.5
93645-20										
93645-25	93650-25	93655-25								
93645-30	93650-30	93655-30	93660-30	93665-30	93670-30	93675-30	93685-30	93695-30	93605-30	
93645-35	93650-35	93655-35	93660-35	93665-35	93670-35	93675-35	93685-35	93695-35	93605-35	
93645-40	93650-40	93655-40	93660-40	93665-40	93670-40	93675-40	93685-40	93695-40	93605-40	
93645-45	93650-45	93655-45	93660-45	93665-45	93670-45	93675-45	93685-45	93695-45	93605-45	
93645-50	93650-50	93655-50	93660-50	93665-50	93670-50	93675-50	93685-50	93695-50	93605-50	
	93650-55	93655-55	93660-55	93665-55	93670-55	93675-55	93685-55	93695-55	93605-55	
		93655-60	93660-60	93665-60	93670-60	93675-60	93685-60	93695-60	93605-60	
							93685-65	93695-65	93605-65	
							93685-70	93695-70	93605-70	
							93685-75	93695-75	93605-75	
							93685-80	93695-80	93605-80	
							93685-85	93695-85	93605-85	
							93685-90	93695-90	93605-90	
							93685-95	93695-95	93605-95	
							93685-100	93695-100	93605-100	



5.5mm Rod Multi-axial Fenestrated Screw

Part Number	"D" (Thread Diameter, mm)									
	Ø 4.5	Ø 5.0	Ø 5.5	Ø 6.0	Ø 6.5	Ø 7.0	Ø 7.5	Ø 8.5	Ø 9.5	Ø 10.5
94745-20										
94745-25	94750-25	94755-25								
94745-30	94750-30	94755-30	94760-30	94765-30	94770-30	94775-30	94785-30	94795-30	94705-30	
94745-35	94750-35	94755-35	94760-35	94765-35	94770-35	94775-35	94785-35	94795-35	94705-35	
94745-40	94750-40	94755-40	94760-40	94765-40	94770-40	94775-40	94785-40	94795-40	94705-40	
94745-45	94750-45	94755-45	94760-45	94765-45	94770-45	94775-45	94785-45	94795-45	94705-45	
94745-50	94750-50	94755-50	94760-50	94765-50	94770-50	94775-50	94785-50	94795-50	94705-50	
	94750-55	94755-55	94760-55	94765-55	94770-55	94775-55	94785-55	94795-55	94705-55	
		94755-60	94760-60	94765-60	94770-60	94775-60	94785-60	94795-60	94705-60	
							94785-65	94795-65	94705-65	
							94785-70	94795-70	94705-70	
							94785-75	94795-75	94705-75	
							94785-80	94795-80	94705-80	
							94785-85	94795-85	94705-85	
							94785-90	94795-90	94705-90	
							94785-95	94795-95	94705-95	
							94785-100	94795-100	94705-100	

6.0mm Rod Multi-axial Fenestrated Screw

Part Number	"D" (Thread Diameter, mm)									
	Ø 4.5	Ø 5.0	Ø 5.5	Ø 6.0	Ø 6.5	Ø 7.0	Ø 7.5	Ø 8.5	Ø 9.5	Ø 10.5
93745-20										
93745-25	93750-25	93755-25								
93745-30	93750-30	93755-30	93760-30	93765-30	93770-30	93775-30	93785-30	93795-30	93705-30	
93745-35	93750-35	93755-35	93760-35	93765-35	93770-35	93775-35	93785-35	93795-35	93705-35	
93745-40	93750-40	93755-40	93760-40	93765-40	93770-40	93775-40	93785-40	93795-40	93705-40	
93745-45	93750-45	93755-45	93760-45	93765-45	93770-45	93775-45	93785-45	93795-45	93705-45	
93745-50	93750-50	93755-50	93760-50	93765-50	93770-50	93775-50	93785-50	93795-50	93705-50	
	93750-55	93755-55	93760-55	93765-55	93770-55	93775-55	93785-55	93795-55	93705-55	
		93755-60	93760-60	93765-60	93770-60	93775-60	93785-60	93795-60	93705-60	
							93785-65	93795-65	93705-65	
							93785-70	93795-70	93705-70	
							93785-75	93795-75	93705-75	
							93785-80	93795-80	93705-80	
							93785-85	93795-85	93705-85	
							93785-90	93795-90	93705-90	
							93785-95	93795-95	93705-95	
							93785-100	93795-100	93705-100	



5.5mm Long-arm Multi-axial Cannulated Screw

Part Number	"D" (Thread Diameter, mm)									
	Ø 4.5	Ø 5.0	Ø 5.5	Ø 6.0	Ø 6.5	Ø 7.0	Ø 7.5	Ø 8.5	Ø 9.5	Ø 10.5
94845-20										
94845-25	94850-25	94855-25								
94845-30	94850-30	94855-30	94860-30	94865-30	94870-30	94875-30	94885-30	94895-30	94805-30	
94845-35	94850-35	94855-35	94860-35	94865-35	94870-35	94875-35	94885-35	94895-35	94805-35	
94845-40	94850-40	94855-40	94860-40	94865-40	94870-40	94875-40	94885-40	94895-40	94805-40	
94845-45	94850-45	94855-45	94860-45	94865-45	94870-45	94875-45	94885-45	94895-45	94805-45	
94845-50	94850-50	94855-50	94860-50	94865-50	94870-50	94875-50	94885-50	94895-50	94805-50	
	94850-55	94855-55	94860-55	94865-55	94870-55	94875-55	94885-55	94895-55	94805-55	
		94855-60	94860-60	94865-60	94870-60	94875-60	94885-60	94895-60	94805-60	
							94885-65	94895-65	94805-65	
							94885-70	94895-70	94805-70	
							94885-75	94895-75	94805-75	
							94885-80	94895-80	94805-80	
							94885-85	94895-85	94805-85	
							94885-90	94895-90	94805-90	
							94885-95	94895-95	94805-95	
							94885-100	94895-100	94805-100	

6.0mm Long-arm Multi-axial Cannulated Screw

Part Number	"D" (Thread Diameter, mm)									
	Ø 4.5	Ø 5.0	Ø 5.5	Ø 6.0	Ø 6.5	Ø 7.0	Ø 7.5	Ø 8.5	Ø 9.5	Ø 10.5
93845-20										
93845-25	93850-25	93855-25								
93845-30	93850-30	93855-30	93860-30	93865-30	93870-30	93875-30	93885-30	93895-30	93805-30	
93845-35	93850-35	93855-35	93860-35	93865-35	93870-35	93875-35	93885-35	93895-35	93805-35	
93845-40	93850-40	93855-40	93860-40	93865-40	93870-40	93875-40	93885-40	93895-40	93805-40	
93845-45	93850-45	93855-45	93860-45	93865-45	93870-45	93875-45	93885-45	93895-45	93805-45	
93845-50	93850-50	93855-50	93860-50	93865-50	93870-50	93875-50	93885-50	93895-50	93805-50	
	93850-55	93855-55	93860-55	93865-55	93870-55	93875-55	93885-55	93895-55	93805-55	
		93855-60	93860-60	93865-60	93870-60	93875-60	93885-60	93895-60	93805-60	
							93885-65	93895-65	93805-65	
							93885-70	93895-70	93805-70	
							93885-75	93895-75	93805-75	
							93885-80	93895-80	93805-80	
							93885-85	93895-85	93805-85	
							93885-90	93895-90	93805-90	
							93885-95	93895-95	93805-95	
							93885-100	93895-100	93805-100	



5.5mm Long-arm Multi-axial Fenestrated Screw

Part Number	"D" (Thread Diameter, mm)									
	Ø 4.5	Ø 5.0	Ø 5.5	Ø 6.0	Ø 6.5	Ø 7.0	Ø 7.5	Ø 8.5	Ø 9.5	Ø 10.5
94945-20										
94945-25	94950-25	94955-25								
94945-30	94950-30	94955-30	94960-30	94965-30	94970-30	94975-30	94985-30	94995-30	94905-30	
94945-35	94950-35	94955-35	94960-35	94965-35	94970-35	94975-35	94985-35	94995-35	94905-35	
94945-40	94950-40	94955-40	94960-40	94965-40	94970-40	94975-40	94985-40	94995-40	94905-40	
94945-45	94950-45	94955-45	94960-45	94965-45	94970-45	94975-45	94985-45	94995-45	94905-45	
94945-50	94950-50	94955-50	94960-50	94965-50	94970-50	94975-50	94985-50	94995-50	94905-50	
	94950-55	94955-55	94960-55	94965-55	94970-55	94975-55	94985-55	94995-55	94905-55	
		94955-60	94960-60	94965-60	94970-60	94975-60	94985-60	94995-60	94905-60	
							94985-65	94995-65	94905-65	
							94985-70	94995-70	94905-70	
							94985-75	94995-75	94905-75	
							94985-80	94995-80	94905-80	
							94985-85	94995-85	94905-85	
							94985-90	94995-90	94905-90	
							94985-95	94995-95	94905-95	
							94985-100	94995-100	94905-100	

6.0mm Long-arm Multi-axial Fenestrated Screw

Part Number	"D" (Thread Diameter, mm)									
	Ø 4.5	Ø 5.0	Ø 5.5	Ø 6.0	Ø 6.5	Ø 7.0	Ø 7.5	Ø 8.5	Ø 9.5	Ø 10.5
93945-20										
93945-25	93950-25	93955-25								
93945-30	93950-30	93955-30	93960-30	93965-30	93970-30	93975-30	93985-30	93995-30	93905-30	
93945-35	93950-35	93955-35	93960-35	93965-35	93970-35	93975-35	93985-35	93995-35	93905-35	
93945-40	93950-40	93955-40	93960-40	93965-40	93970-40	93975-40	93985-40	93995-40	93905-40	
93945-45	93950-45	93955-45	93960-45	93965-45	93970-45	93975-45	93985-45	93995-45	93905-45	
93945-50	93950-50	93955-50	93960-50	93965-50	93970-50	93975-50	93985-50	93995-50	93905-50	
	93950-55	93955-55	93960-55	93965-55	93970-55	93975-55	93985-55	93995-55	93905-55	
		93955-60	93960-60	93965-60	93970-60	93975-60	93985-60	93995-60	93905-60	
							93985-65	93995-65	93905-65	
							93985-70	93995-70	93905-70	
							93985-75	93995-75	93905-75	
							93985-80	93995-80	93905-80	
							93985-85	93995-85	93905-85	
							93985-90	93995-90	93905-90	
							93985-95	93995-95	93905-95	
							93985-100	93995-100	93905-100	

MIS Rod Straight (Ti)



Part Number.	Diameter (mm)	"L" (Length, mm)
69120-030	5.5mm	30
69120-035		35
69120-040		40
69120-045		45
69120-050		50
69120-055		55
69120-060		60
69120-065		65
69120-070		70
69120-075		75
69120-080		80
69120-085		85
69120-090		90
69120-095		95
69120-100		100
69120-110		110
69120-120		120
69120-130		130
69120-140		140
69120-150		150
69120-160		160
69120-170		170
69120-180		180
69120-190		190
69120-200		200
69120-210		210
69120-220		220
69120-230		230
69120-240		240
69120-250		250
69120-260	260	
69120-270	270	
69120-280	280	
69120-290	290	
69120-300	300	
69120-350	350	
69120-400	400	
69120-450	450	
69120-500	500	

Part Number.	Diameter (mm)	"L" (Length, mm)
69130-030	6.0mm	30
69130-035		35
69130-040		40
69130-045		45
69130-050		50
69130-055		55
69130-060		60
69130-065		65
69130-070		70
69130-075		75
69130-080		80
69130-085		85
69130-090		90
69130-095		95
69130-100		100
69130-110		110
69130-120		120
69130-130		130
69130-140		140
69130-150		150
69130-160		160
69130-170		170
69130-180		180
69130-190		190
69130-200		200
69130-210		210
69130-220		220
69130-230		230
69130-240		240
69130-250		250
69130-260	260	
69130-270	270	
69130-280	280	
69130-290	290	
69130-300	300	
69130-350	350	
69130-400	400	
69130-450	450	
69130-500	500	

MIS Pre-Bent Rod (Ti)



Part Number.	Diameter (mm)	"L" (Length, mm)
69121-030	5.5mm	30
69121-035		35
69121-040		40
69121-045		45
69121-050		50
69121-055		55
69121-060		60
69121-065		65
69121-070		70
69121-075		75
69121-080		80
69121-085		85
69121-090		90
69121-095		95
69121-100		100
69121-110		110
69121-120		120
69121-130		130
69121-140		140
69121-150		150
69121-160		160
69121-170		170
69121-180		180
69121-190		190
69121-200		200
69121-210		210
69121-220		220
69121-230		230
69121-240		240
69121-250		250
69121-260	260	
69121-270	270	
69121-280	280	
69121-290	290	
69121-300	300	
69121-350	350	
69121-400	400	
69121-450	450	
69121-500	500	

Part Number.	Diameter (mm)	"L" (Length, mm)
69131-030	6.0mm	30
69131-035		35
69131-040		40
69131-045		45
69131-050		50
69131-055		55
69131-060		60
69131-065		65
69131-070		70
69131-075		75
69131-080		80
69131-085		85
69131-090		90
69131-095		95
69131-100		100
69131-110		110
69131-120		120
69131-130		130
69131-140		140
69131-150		150
69131-160		160
69131-170		170
69131-180		180
69131-190		190
69131-200		200
69131-210		210
69131-220		220
69131-230		230
69131-240		240
69131-250		250
69131-260	260	
69131-270	270	
69131-280	280	
69131-290	290	
69131-300	300	
69131-350	350	
69131-400	400	
69131-450	450	
69131-500	500	

MIS Rod Straight (CoCr)



Part Number.	Diameter (mm)	"L" (Length, mm)
69220-030	5.5mm	30
69220-035		35
69220-040		40
69220-045		45
69220-050		50
69220-055		55
69220-060		60
69220-065		65
69220-070		70
69220-075		75
69220-080		80
69220-085		85
69220-090		90
69220-095		95
69220-100		100
69220-110		110
69220-120		120
69220-130		130
69220-140		140
69220-150		150
69220-160		160
69220-170		170
69220-180		180
69220-190		190
69220-200		200
69220-210		210
69220-220		220
69220-230		230
69220-240		240
69220-250		250
69220-260	260	
69220-270	270	
69220-280	280	
69220-290	290	
69220-300	300	
69220-350	350	
69220-400	400	
69220-450	450	
69220-500	500	

Part Number.	Diameter (mm)	"L" (Length, mm)
69230-030	6.0mm	30
69230-035		35
69230-040		40
69230-045		45
69230-050		50
69230-055		55
69230-060		60
69230-065		65
69230-070		70
69230-075		75
69230-080		80
69230-085		85
69230-090		90
69230-095		95
69230-100		100
69230-110		110
69230-120		120
69230-130		130
69230-140		140
69230-150		150
69230-160		160
69230-170		170
69230-180		180
69230-190		190
69230-200		200
69230-210		210
69230-220		220
69230-230		230
69230-240		240
69230-250		250
69230-260	260	
69230-270	270	
69230-280	280	
69230-290	290	
69230-300	300	
69230-350	350	
69230-400	400	
69230-450	450	
69230-500	500	

MIS Pre-Bent Rod (CoCr)



Part Number.	Diameter (mm)	"L" (Length, mm)
69221-030	5.5mm	30
69221-035		35
69221-040		40
69221-045		45
69221-050		50
69221-055		55
69221-060		60
69221-065		65
69221-070		70
69221-075		75
69221-080		80
69221-085		85
69221-090		90
69221-095		95
69221-100		100
69221-110		110
69221-120		120
69221-130		130
69221-140		140
69221-150		150
69221-160		160
69221-170		170
69221-180		180
69221-190		190
69221-200		200
69221-210		210
69221-220		220
69221-230		230
69221-240		240
69221-250		250
69221-260	260	
69221-270	270	
69221-280	280	
69221-290	290	
69221-300	300	
69221-350	350	
69221-400	400	
69221-450	450	
69221-500	500	

Part Number.	Diameter (mm)	"L" (Length, mm)
69231-030	6.0mm	30
69231-035		35
69231-040		40
69231-045		45
69231-050		50
69231-055		55
69231-060		60
69231-065		65
69231-070		70
69231-075		75
69231-080		80
69231-085		85
69231-090		90
69231-095		95
69231-100		100
69231-110		110
69231-120		120
69231-130		130
69231-140		140
69231-150		150
69231-160		160
69231-170		170
69231-180		180
69231-190		190
69231-200		200
69231-210		210
69231-220		220
69231-230		230
69231-240		240
69231-250		250
69231-260	260	
69231-270	270	
69231-280	280	
69231-290	290	
69231-300	300	
69231-350	350	
69231-400	400	
69231-450	450	
69231-500	500	



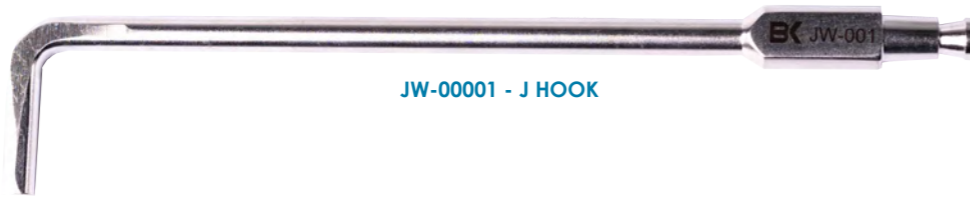
Part #	Description
14170	Wire Holder
14190	Tab Breaker
14230-10	MIS Compressor
14240	Nitinol Wire SHARP (580mm)
14240-10	Nitinol Wire BLUNT (580mm)
14270	Mega 5.5 Plus Derotation Handle
14310	One Step MIS Driver
14310-10	1/4" One Step MIS Driver
14318-10	One Step K-Wire MIS Screwdriver (447mm)
14318-20	One Step K-Wire MIS Tap (375mm)
14318-30	One Step K-Wire Nav Screwdriver (470mm)
14318-40	One Step K-Wire Nav Tap (437mm)
14330	Dye Injector Pusher
14330-30	Dye Injector (with a plunger)
51660	Probe Bent (Original)
51680	Ball Point Tester/Large
51710-20	French Rod Bender
51750	Rod Forceps
51750-20	Power Rod Forceps
82520	I-type Ratchet Handle
82530	T-type Ratchet Handle
82540	Olive Ratchet Handle
82630	T-Torque Handle (10Nm)
82630-75	T-Torque Handle (7.5Nm)
JW-00001	J Hook

Part #	Description
10140-20	Strong Pickup Wrench (BT30)
10140-30	Pickup Wrench (BT30)
10300	Cannulated Adjust Driver
10360	Cannulated MIS Screwdriver
10410	MIS Final Wrench (BT30)
10480	MIS Final Wrench (BT20)
10490	MIS Dual Locking Wrench
10500	Injector Wrench
10560	MIS Rod Checker & Alignment Driver
11111	Fascia Cutter
11170	Cannulated Awl
11245	Cannulated Tap 4.5
11255	Cannulated Tap 5.5
11265	Cannulated Tap 6.5
11275	Cannulated Tap 7.5
11285	Cannulated Tap 8.5
12170	Reducer Stick for Multi Axial Screws
12190	Rod Holder (Inserter)
12220	Dilator (12221, 12222, 12223)
12230-10	Anti-Torque Sleeve
12250	Long Rod Inserter
12280-20	Inner Anti-Torque Driver
12420-20	MIS Long Tab Protector
13100	Rod Calipers
13110	Cannulated Probe
14090-10	Mega 5.5 Plus Spinner





11111 - FASCIA CUTTER



JW-00001 - J HOOK



12420-20 - MIS LONG TAB PROTECTOR



14300-30 - DYE INJECTOR PUSHER



14330-30 - DYE INJECTOR WITH PLUNGER

10140-20 - STRONG P/U WRENCH



10560 - MIS ROD CHECKER & ALIGNMENT DRIVER



12190 - ROD HOLDER

