

## *SPINE* Surgery Series

PRODUCT  
CATALOG



**JIANGSU BAIDE MEDICAL INSTRUMENT CO.,LTD.**

Address: South Side of Dongqi Road,Donglai  
Village,Yangshe Town,Zhangjiagang City,  
Jiangsu,China

Tel: +86-512-58198689 58505491

Fax: +86-512-58198689 58505491

Post Code: 215627

Website:www.bd-ortho.com



CONTENTS

- **SLIM** Anterior Cervical Plate System ..... 01
  
- **SPEEDO** Anterior Cervical Plate System ..... 06
  
- **LISSOM** 5.5mm Spine System ..... 11
  
- **CERVICAL-CAGE** System ..... 24
  
- **LUMBAR-CAGE** System ..... 27
  
- **MESH** System ..... 33

**SLIM Anterior Cervical Plate**



Implant			
Product Code	Specification	Material	Remarks
302001220	22.5mm	Ti	Grey
302001250	25mm	Ti	Grey
302001270	27.5mm	Ti	Grey
302001300	30mm	Ti	Grey
302001320	32.5mm	Ti	Grey
302001350	35mm	Ti	Grey
302001370	37.5mm	Ti	Grey
302001400	40mm	Ti	Grey
302001420	42.5mm	Ti	Grey
302001450	45mm	Ti	Grey
302001470	47.5mm	Ti	Grey
302001500	50mm	Ti	Grey
302001520	52.5mm	Ti	Grey
302001550	55mm	Ti	Grey
302001570	57.5mm	Ti	Grey
302001600	60mm	Ti	Grey
302001620	62.5mm	Ti	Grey
302001650	65mm	Ti	Grey
302001670	67.5mm	Ti	Grey
302001700	70mm	Ti	Grey
302001750	75mm	Ti	Grey

**SLIM 3.5mm Anterior Cervical Screw**



Implant			
Product Code	Specification	Material	Remarks
303002143	14mm	TA	Purple
303002163	16mm	TA	Light Blue
303002183	18mm	TA	Light Green

**SLIM 4.0mm Anterior Cervical Revision Screw**

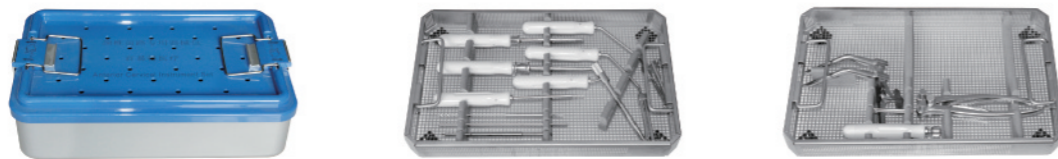


Implant			
Product Code	Specification	Material	Remarks
303003141	14mm	TA	Grey
303003161	16mm	TA	Grey
303003181	18mm	TA	Grey

**SLIM Anterior Cervical Instrument Set**

Instrument			
Product Code	Product Description	Quantity	Remarks
250000	Instrument Set	1	
250001	Instrument Case	1	
251001	Fixation Pin	2	
251003	Plate Bender	1	
251005	Screwdriver Sleeve	1	
251007	Position Rod	2	
251009	Distractor	1	
251011	Awl, 2.0mm	1	
251013	Drill Bit, Φ2.2mm	1	
251015	Screwdriver	1	
251017	Locking Cap Pusher	1	
251019	Inserter for Position Rod	1	
251021	Universal Handle	1	
251023	Inserter for Fixation Pin	1	
251025	Plate Holder	1	
251027	Dual Drilling Guide	1	
251029	Mono Drilling Guide	1	
251031	Tap, Φ3.0mm	1	
251033	Cervical Plate and Screw Box	1	Additional

250000 Instrument Set



251001 Fixation Pin

251003 Plate Bender



251005 Screwdriver Sleeve



251007 Position Rod



251009 Distractor



251011 Awl, 2.0mm



251013 Drill Bit, Φ2.2mm



251015 Screwdriver



251017 Locking Cap Pusher



251019 Inserter for Position Rod



251021 Universal Handle



251023 Inserter for Fixation Pin



251025 Plate Holder



251027 Dual Drilling Guide



251029 Mono Drilling Guide



251031 Tap, Φ3.0mm



251033 Cervical Plate and Screw Box



SPEEDO Anterior Cervical Plate



Implant			
Product Code	Specification	Material	Remarks
302006210	21mm	Ti	Grey
302006230	23mm	Ti	Grey
302006250	25mm	Ti	Grey
302006270	27.5mm	Ti	Grey
302006300	30mm	Ti	Grey
302006320	32.5mm	Ti	Grey
302006350	35mm	Ti	Grey
302006370	37.5mm	Ti	Grey
302006400	40mm	Ti	Grey
302006420	42.5mm	Ti	Grey
302006450	45mm	Ti	Grey
302006470	47.5mm	Ti	Grey
302006500	50mm	Ti	Grey
302006520	52.5mm	Ti	Grey
302006550	55mm	Ti	Grey
302006570	57.5mm	Ti	Grey
302006600	60mm	Ti	Grey
302006620	62.5mm	Ti	Grey
302006650	65mm	Ti	Grey
302006670	67.5mm	Ti	Grey
302006700	70mm	Ti	Grey
302006750	75mm	Ti	Grey
302006800	80mm	Ti	Grey

**SPEEDO 4.0mm Anterior Cervical Screw**



Implant			
Product Code	Specification	Material	Remarks
303007131	13mm	TA	Grey
303007151	15mm	TA	Grey
303007171	17mm	TA	Grey
303007191	19mm	TA	Grey
303007211	21mm	TA	Grey
303007231	23mm	TA	Grey

**SPEEDO 4.5mm Anterior Cervical Revision Screw**



Implant			
Product Code	Specification	Material	Remarks
303008101	10mm	TA	Grey
303008121	12mm	TA	Grey
303008141	14mm	TA	Grey
303008161	16mm	TA	Grey
303008181	18mm	TA	Grey
303008201	20mm	TA	Grey
303008221	22mm	TA	Grey
303008241	24mm	TA	Grey

**SPEEDO Anterior Cervical Instrument Set**

Instrument			
Product Code	Product Description	Quantity	Remarks
260000	Instrument Set	1	
260001	Instrument Case	1	
261001	Awl	1	
261003	Drill Bit $\Phi 2.2 \times 12\text{mm}$	1	
261005	Drill Bit $\Phi 2.2 \times 14\text{mm}$	1	
261007	Drill Bit $\Phi 2.2 \times 16\text{mm}$	1	
261009	Screwdriver SW2.5	1	
261011	Plate Holder	1	
261013	Handle with Quick Coupling	2	
261015	Locking Screwdriver	2	
261017	Tap, $\Phi 4$	1	
261019	Fixation Pin	4	
261021	Insertor for Fixation Pin	1	
261023	Distractor	1	
261025	Position Rod	2	
261027	Insertor for Position Rod	1	
261029	Plate Bender	1	
261031	Drilling Guide	1	
261033	Mono Drilling Guide	1	
262035	Cervical Plate and Screw Box	1	Additional

260000 Instrument Set



261001 Awl



261003 Drill Bit  $\Phi 2.2 \times 12\text{mm}$



261005 Drill Bit  $\Phi 2.2 \times 14\text{mm}$



261007 Drill Bit  $\Phi 2.2 \times 16\text{mm}$



261021 Inserter for Fixation Pin



261023 Distractor



261009 Screwdriver SW2.5



261011 Plate Holder



261025 Position Rod



261027 Inserter for Position Rod



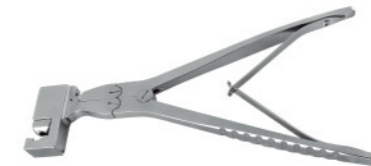
261013 Handle with Quick Coupling



261015 Locking Screwdriver



261029 Plate Bender



261031 Drilling Guide



261017 Tap,  $\Phi 4$



261019 Fixation Pin



261033 Mono Drilling Guide



262035 Cervical Plate and Screw Box



**LISSOM Pedicle Screw**



Implant			
Product Code	Specification	Material	Remarks
403007351	Φ4.5×35mm	TA	Purple Red
403007401	Φ4.5×40mm	TA	Purple Red
403010351	Φ5.0×35mm	TA	Nattier Blue
403010401	Φ5.0×40mm	TA	Nattier Blue
403010451	Φ5.0×45mm	TA	Nattier Blue
403013351	Φ5.5×35mm	TA	Green
403013401	Φ5.5×40mm	TA	Green
403013451	Φ5.5×45mm	TA	Green
403013501	Φ5.5×50mm	TA	Green
403016351	Φ6.0×35mm	TA	Deep Blue
403016401	Φ6.0×40mm	TA	Deep Blue
403016451	Φ6.0×45mm	TA	Deep Blue
403016501	Φ6.0×50mm	TA	Deep Blue
403016551	Φ6.0×55mm	TA	Deep Blue
403019351	Φ6.5×35mm	TA	Golden
403019401	Φ6.5×40mm	TA	Golden
403019451	Φ6.5×45mm	TA	Golden
403019501	Φ6.5×50mm	TA	Golden
403019551	Φ6.5×55mm	TA	Golden
403022351	Φ7.0×35mm	TA	Dark Golden
403022401	Φ7.0×40mm	TA	Dark Golden
403022451	Φ7.0×45mm	TA	Dark Golden
403022501	Φ7.0×50mm	TA	Dark Golden
403022551	Φ7.0×55mm	TA	Dark Golden

**LISSOM Reduction Pedicle Screw**



Implant			
Product Code	Specification	Material	Remarks
403061351	Φ4.5×35mm	TA	Purple Red
403061401	Φ4.5×40mm	TA	Purple Red
403064351	Φ5.0×35mm	TA	Nattier Blue
403064401	Φ5.0×40mm	TA	Nattier Blue
403064451	Φ5.0×45mm	TA	Nattier Blue
403067351	Φ5.5×35mm	TA	Green
403067401	Φ5.5×40mm	TA	Green
403067451	Φ5.5×45mm	TA	Green
403067501	Φ5.5×50mm	TA	Green
403070351	Φ6.0×35mm	TA	Deep Blue
403070401	Φ6.0×40mm	TA	Deep Blue
403070451	Φ6.0×45mm	TA	Deep Blue
403070501	Φ6.0×50mm	TA	Deep Blue
403070551	Φ6.0×55mm	TA	Deep Blue
403073351	Φ6.5×35mm	TA	Golden
403073401	Φ6.5×40mm	TA	Golden
403073451	Φ6.5×45mm	TA	Golden
403073501	Φ6.5×50mm	TA	Golden
403073551	Φ6.5×55mm	TA	Golden
403076351	Φ7.0×35mm	TA	Dark Golden
403076401	Φ7.0×40mm	TA	Dark Golden
403076451	Φ7.0×45mm	TA	Dark Golden
403076501	Φ7.0×50mm	TA	Dark Golden
403076551	Φ7.0×55mm	TA	Dark Golden



**LISSOM** Multiaxial Pedicle Screw



Implant			
Product Code	Specification	Material	Remarks
403034351	Φ4.5×35mm	TA	Purple Red
403034401	Φ4.5×40mm	TA	Purple Red
403037351	Φ5.0×35mm	TA	Nattier Blue
403037401	Φ5.0×40mm	TA	Nattier Blue
403037451	Φ5.0×45mm	TA	Nattier Blue
403040351	Φ5.5×35mm	TA	Green
403040401	Φ5.5×40mm	TA	Green
403040451	Φ5.5×45mm	TA	Green
403040501	Φ5.5×50mm	TA	Green
403043351	Φ6.0×35mm	TA	Deep Blue
403043401	Φ6.0×40mm	TA	Deep Blue
403043451	Φ6.0×45mm	TA	Deep Blue
403043501	Φ6.0×50mm	TA	Deep Blue
403043551	Φ6.0×55mm	TA	Deep Blue
403046351	Φ6.5×35mm	TA	Golden
403046401	Φ6.5×40mm	TA	Golden
403046451	Φ6.5×45mm	TA	Golden
403046501	Φ6.5×50mm	TA	Golden
403046551	Φ6.5×55mm	TA	Golden
403049351	Φ7.0×35mm	TA	Dark Golden
403049401	Φ7.0×40mm	TA	Dark Golden
403049451	Φ7.0×45mm	TA	Dark Golden
403049501	Φ7.0×50mm	TA	Dark Golden
403049551	Φ7.0×55mm	TA	Dark Golden

**LISSOM** Multiaxial Reduction Pedicle Screw



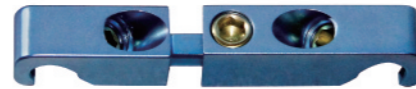
Implant			
Product Code	Specification	Material	Remarks
403088351	Φ4.5×35mm	TA	Purple Red
403088401	Φ4.5×40mm	TA	Purple Red
403091351	Φ5.0×35mm	TA	Nattier Blue
403091401	Φ5.0×40mm	TA	Nattier Blue
403091451	Φ5.0×45mm	TA	Nattier Blue
403094351	Φ5.5×35mm	TA	Green
403094401	Φ5.5×40mm	TA	Green
403094451	Φ5.5×45mm	TA	Green
403094501	Φ5.5×50mm	TA	Green
403097351	Φ6.0×35mm	TA	Deep Blue
403097401	Φ6.0×40mm	TA	Deep Blue
403097451	Φ6.0×45mm	TA	Deep Blue
403097501	Φ6.0×50mm	TA	Deep Blue
403097551	Φ6.0×55mm	TA	Deep Blue
403100351	Φ6.5×35mm	TA	Golden
403100401	Φ6.5×40mm	TA	Golden
403100451	Φ6.5×45mm	TA	Golden
403100501	Φ6.5×50mm	TA	Golden
403100551	Φ6.5×55mm	TA	Golden
403103351	Φ7.0×35mm	TA	Dark Golden
403103401	Φ7.0×40mm	TA	Dark Golden
403103451	Φ7.0×45mm	TA	Dark Golden
403103501	Φ7.0×50mm	TA	Dark Golden
403103551	Φ7.0×55mm	TA	Dark Golden

**LISSOM** Pedicle Screw Cap



Implant			
Product Code	Specification	Material	Remarks
403108090	M9	TA	Grey

**LISSOM Crosslink I**



Implant			
Product Code	Specification	Material	Remarks
403114501	50mm	TA	Light Blue
403114551	55mm	TA	Light Blue
403114651	65mm	TA	Light Blue

**LISSOM Crosslink II**



Implant			
Product Code	Specification	Material	Remarks
403113401	40mm	TA	Light Blue
403113451	45mm	TA	Light Blue
403113501	50mm	TA	Light Blue
403113551	55mm	TA	Light Blue
403113601	60mm	TA	Light Blue
403113651	65mm	TA	Light Blue
403113701	70mm	TA	Light Blue
403113751	75mm	TA	Light Blue
403113801	80mm	TA	Light Blue
403113851	85mm	TA	Light Blue
403113901	90mm	TA	Light Blue
403113951	95mm	TA	Light Blue
403113911	100mm	TA	Light Blue
403113921	105mm	TA	Light Blue
403113931	110mm	TA	Light Blue
403113941	115mm	TA	Light Blue
403113961	120mm	TA	Light Blue

**LISSOM Rod**



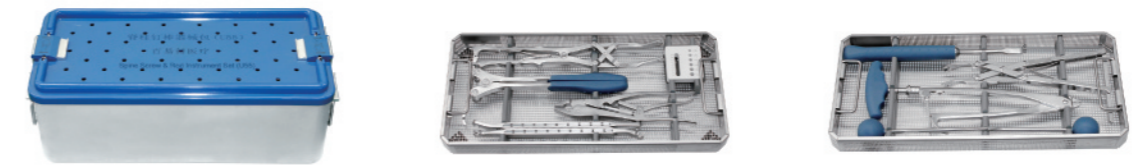
Implant			
Product Code	Specification	Material	Remarks
403119051	Φ5.5×50mm	TA	Light Blue
403119061	Φ5.5×60mm	TA	Light Blue
403119071	Φ5.5×70mm	TA	Light Blue
403119081	Φ5.5×80mm	TA	Light Blue
403119091	Φ5.5×90mm	TA	Light Blue
403119101	Φ5.5×100mm	TA	Light Blue
403119111	Φ5.5×110mm	TA	Light Blue
403119121	Φ5.5×120mm	TA	Light Blue
403119131	Φ5.5×130mm	TA	Light Blue
403119141	Φ5.5×140mm	TA	Light Blue
403119151	Φ5.5×150mm	TA	Light Blue
403119161	Φ5.5×160mm	TA	Light Blue
403119171	Φ5.5×170mm	TA	Light Blue
403119181	Φ5.5×180mm	TA	Light Blue
403119201	Φ5.5×200mm	TA	Light Blue
403119221	Φ5.5×220mm	TA	Light Blue
403119241	Φ5.5×240mm	TA	Light Blue
403119251	Φ5.5×250mm	TA	Light Blue
403119261	Φ5.5×260mm	TA	Light Blue
403119281	Φ5.5×280mm	TA	Light Blue
403119301	Φ5.5×300mm	TA	Light Blue
403119351	Φ5.5×350mm	TA	Light Blue
403119401	Φ5.5×400mm	TA	Light Blue
403119451	Φ5.5×450mm	TA	Light Blue
403119501	Φ5.5×500mm	TA	Light Blue

**LISSOM 5.5mm Spine Instrument Set**

Instrument			
Product Code	Product Description	Quantity	Remarks
310000	Instrument Set	1	
310001	Instrument Case	1	
311003	Set Screw Holder(Short)	1	
311005	Set Screw Holder(Long)	1	
301013	Crosslink Hooks Holder	1	
301015	Rod Bender	1	
311007	Star Screwdriver with Quick Coupling(Short)	1	
311009	Star Screwdriver with Quick Coupling(Long)	1	
311011	Pedicle Straight Probe	1	
311013	Pedicle Curved Probe	1	
311015	Breaker	1	
311017	Marker(L)	5	
311019	Marker(R)	5	
311021	Marker Inserter	1	
311023	Bending Iron(L)	1	
311025	Bending Iron(R)	1	
301037	Hex Rod Rotation Wrench	1	
301039	Power Gripper	1	
311027	Reducer	1	
301043	Distractor	1	
301045	Compressor	1	
311029	Awl	1	
311031	Straight Awl	1	
311033	Curved Awl	1	
311035	Break Off Protector	1	
311037	Tap,Φ4.5mm	1	
311039	Tap,Φ5.5mm	1	
311041	Tap,Φ6.0mm	1	
311043	Tap,Φ6.5mm	1	
311045	Hex Screwdriver	1	
311047	Single-axial Screwdriver(Short)	1	
311049	Single-axial Screwdriver(Long)	1	
311051	Multi-axial Screwdriver(Short)	1	
311053	Multi-axial Screwdriver(Long)	1	
311055	T-handle with Quick Coupling	1	
311057	Template	1	
311059	Rod Pusher	1	
311061	Counter Torque	1	

Instrument			
Product Code	Product Description	Quantity	Remarks
311063	Jujube Wheel Handle	1	
311065	Pedicle Screw Measuring(white)	2	
311067	Measuring Plate(black)	1	
301003	Rod Holder	1	
311069	Hex Rod Rotation Forceps	1	
311071	Rod Push Forceps	1	
315001	Pedicle Screw Box	1	Additional

310000 Instrument Set



311003 Set Screw Holder(Short)



311005 Set Screw Holder(Long)



301013 Crosslink Hooks Holder



301015 Rod Bender



311007 Star Screwdriver with Quick Coupling(Short)



311009 Star Screwdriver with Quick Coupling(Long)



311023 Bending Iron(L)



311025 Bending Iron(R)



311011 Pedicle Straight Probe



311013 Pedicle Curved Probe



301037 Hex Rod Rotation Wrench



301039 Power Gripper



311015 Breaker



311017 Marker(L)



311027 Reducer



301043 Distractor



311019 Marker(R)



311021 Marker Inserter



301045 Compressor



311029 Awl



311031 Straight Awl



311033 Curved Awl



311047 Single-axial Screwdriver(Short)



311049 Single-axial Screwdriver(Long)



311035 Break Off Protector



311037 Tap,Φ4.5mm



311051 Multi-axial Screwdriver(Short)



311053 Multi-axial Screwdriver(Long)



311039 Tap,Φ5.5mm



311041 Tap,Φ6.0mm



311055 T-handle with Quick Coupling



311057 Template



311043 Tap,Φ6.5mm



311045 Hex Screwdriver



311059 Rod Pusher



311061 Counter Torque



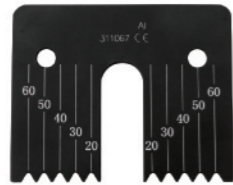
311063 Jujube Wheel Handle



311065 Pedicle Screw Measuring (white)



311067 Measuring Plate (black)



301003 Rod Holder



311069 Hex Rod Rotation Forceps



311071 Rod Push Forceps



315001 Pedicle Screw Box



## CERVICAL-CAGE



Implant			
Product Code	Specification	Material	Remarks
503017290	5×16×13mm	TA	Grey
503018290	6×16×13mm	TA	Grey
503019290	7×16×13mm	TA	Grey
503020290	8×16×13mm	TA	Grey

Implant			
Product Code	Specification	Material	Remarks
507017290	5×16×13mm	PEEK	
507018290	6×16×13mm	PEEK	
507019290	7×16×13mm	PEEK	
507020290	8×16×13mm	PEEK	

**CERVICAL-CAGE Instrument Set**

Instrument			
Product Code	Product Description	Quantity	Remarks
290000	Instrument Set	1	
290001	Instrument Case	1	
291001	Trial,5mm	2	
291003	Trial,6mm	2	
291005	Trial,7mm	2	
291007	Trial,8mm	2	
291009	Implant Inserter(Long)	2	
291011	Implant Inserter(Short)	2	
291013	Curve Tamp	1	
291015	Implant Support	1	
291017	Graft Impactor	1	

290000 Instrument Set



291001 Trial,5mm



291003 Trial,6mm



291005 Trial,7mm



291007 Trial,8mm



291009 Implant Inserter(Long)



291011 Implant Inserter(Short)



291013 Curve Tamp



291015 Implant Support



291017 Graft Impactor



### LUMBAR-CAGE



Implant			
Product Code	Specification	Material	Remarks
503023110	8×10×22mm	TA	Grey
503025110	10×10×22mm	TA	Grey
503027110	12×10×22mm	TA	Grey
503029110	14×10×22mm	TA	Grey
503023130	8×10×26mm	TA	Grey
503025130	10×10×26mm	TA	Grey
503027130	12×10×26mm	TA	Grey
503029130	14×10×26mm	TA	Grey

Implant			
Product Code	Specification	Material	Remarks
507023110	8×10×22mm	PEEK	
507025110	10×10×22mm	PEEK	
507027110	12×10×22mm	PEEK	
507029110	14×10×22mm	PEEK	
507023130	8×10×26mm	PEEK	
507025130	10×10×26mm	PEEK	
507027130	12×10×26mm	PEEK	
507029130	14×10×26mm	PEEK	

### LUMBAR-CAGE Instrument Set

Instrument			
Product Code	Product Description	Quantity	Remarks
340000	Instrument Set	1	
340001	Instrument Case	1	
341001	Straight Serrated Cup Curette(Long)	1	
341003	Straight Serrated Cup Curette(Short)	1	
341005	Pull Scraper	1	
341007	Push Scraper	1	
341009	Trial,6 × 24mm	1	
341011	Trial,8 × 22mm	1	
341013	Trial,8 × 26mm	1	
341015	Trial,10 × 22mm	1	
341017	Trial,10 × 26mm	1	
341019	Trial,12 × 22mm	1	
341021	Trial,12 × 26mm	1	
341023	Trial,14 × 22mm	1	
341025	Trial,14 × 26mm	1	
341027	Threaded Insertter	1	
341029	Wrench,Φ3.2mm	1	
341031	Slap Hammer	1	
341033	Scraper,7mm	1	
341035	Scraper,8mm	1	
341037	Scraper,9mm	1	
341039	Slap Plate	1	
341041	Round Scraper,10.5 × 10mm	1	
341043	Round Scraper,9.5 × 8.5mm	1	
341045	Round Scraper,8.5 × 7.5mm	1	
341047	Round Scraper,7.5 × 6.5mm	1	
341049	Root Retractor(Large)	1	
341051	Root Retractor(Small)	1	
341053	Elevator	1	
341055	Graft Impacter	1	
341057	Implant Support	1	
341059	Bone Plugger	1	
341061	Bone Impactor	1	

#### 340000 Instrument Set





341001 Straight Serrated Cup Curette(Long)



341003 Straight Serrated Cup Curette(Short)



341017 Trial,10×26mm



341019 Trial,12×22mm



341005 Pull Scraper



341007 Push Scraper



341021 Trial,12×26mm



341023 Trial,14×22mm



341009 Trial,6×24mm



341011 Trial,8×22mm



341025 Trial,14×26mm



341027 Threaded Inserter



341013 Trial,8×26mm



341015 Trial,10×22mm



341029 Wrench,Φ3.2mm



341031 Slap Hammer



341033 Scraper,7mm



341035 Scraper,8mm



341049 Root Retractor(Large)



341051 Root Retractor(Small)



341037 Scraper,9mm



341039 Slap Plate



341053 Elevator



341055 Graft Impacter



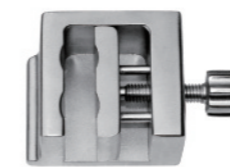
341041 Round Scraper,10.5×10mm



341043 Round Scraper,9.5×8.5mm



341057 Implant Support



341059 Bone Plugger



341045 Round Scraper,8.5×7.5mm



341047 Round Scraper,7.5×6.5mm



341061 Bone Impactor



**MESH**



Implant			
Product Code	Specification	Material	Remarks
503007300	Φ9×30mm	TA	Grey
503008300	Φ10×30mm	TA	Grey
503009300	Φ12×30mm	TA	Grey
503010300	Φ14×30mm	TA	Grey
503011300	Φ16×30mm	TA	Grey
503012300	Φ18×30mm	TA	Grey
503013300	Φ20×30mm	TA	Grey
503014300	Φ22×30mm	TA	Grey
503015300	Φ25×30mm	TA	Grey

**MESH Instrument Set**

Instrument			
Product Code	Product Description	Quantity	Remarks
350000	Instrument Set	1	
350001	Instrument Case	1	
351001	Mesh Forceps	1	
351003	Mesh Cutter	1	
351005	Mesh Impactor(Straight)	1	
351007	Mesh Impactor(Angled)	1	
351009	Measure, Φ10 ~ 12mm	1	
351011	Measure, Φ14 ~ 16mm	1	
351013	Measure, Φ18 ~ 20mm	1	
351015	Measure, Φ22 ~ 25mm	1	
351017	Compactor, Φ6mm	1	
351019	Compactor, Φ12mm	1	
351021	Compactor, Φ18mm	1	
351023	Trimming Rasp	1	
352025	Bone Graft Holder	1	
351027	Caliper	1	

350000 Instrument Set



351001 Mesh Forceps



351003 Mesh Cutter



351005 Mesh Impactor(Straight)



351007 Mesh Impactor(Angled)



351021 Compactor,Φ18mm



351023 Trimming Rasp



371009 Measure,Φ10~12mm



351011 Measure,Φ14~16mm



351025 Bone Graft Holder



351027 Caliper



351013 Measure,Φ18~20mm



351015 Measure,Φ22~25mm



351017 Compactor,Φ6mm



351019 Compactor,Φ12mm

