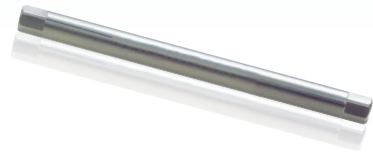


### The Rod

The 5.5mm diameter Smooth Rod is available from 40 to 480mm in length.

Rods pre-cut in multiple lengths.

The hexagonal design at both ends are easier for rod rotation.



Description	Item No.	Description	Item No.
Smooth Rod ø5.5 mm			
L 40 mm	132-50402	L 170 mm	132-51702
L 50 mm	132-50502	L 200 mm	132-52002
L 60 mm	132-50602	L 250 mm	132-52502
L 70 mm	132-50702	L 300 mm	132-53002
L 80 mm	132-50802	L 350 mm	132-53502
L 90 mm	132-50902	L 360 mm	132-53602
L 100 mm	132-51002	L 400 mm	132-54002
L 110 mm	132-51102	L 450 mm	132-54502
L 130 mm	132-51302	L 480 mm	132-54802

### Transverse Link

The telescoping Transverse Link can be added to provide extra resistance to rotational and lateral bending forces in multi-level constructs.

The Transverse Link can be bent dorsally to aid with placement.



Description	Item No.
Transverse Link	161-26082

### Hook

Pedicle Hook

Lamina Hook

Lamina Hook is used to engage in lamina or transverse process.



Description	H/mm	W/mm	Item No.
Pedicle Hook	4	8	156-18042
Pedicle Hook	5	8	156-18052
Pedicle Hook	7	8	156-18072
Pedicle Hook	9	8	156-18092
Lamina Hook	4	5	156-05042
Lamina Hook	5	5	156-05052
Lamina Hook	7	5	156-05072
Lamina Hook	9	5	156-05092
Lamina Hook	7	7	156-07072
Lamina Hook	9	7	156-07092
Lamina Hook	11	7	156-07112

※ Request demand

### Connector Block

Allows connection to different diameter rods.

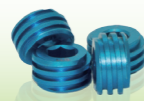


Description	Item No.	
Domino Connector Block(short)	5.5/5.5	142-02572
Domino Connector Block(short)	5.5/6.0	142-02612
Axial Connector Block	5.5/5.5	142-12572
Axial Connector Block	5.5/6.0	142-12612

※ Request demand

### Star Set Screw

The Star Set Screw features a square thread design to obviate head splay and minimise the risk of cross threading.



Description	Item No.
Star Set Screw Ø 9mm	174-07028



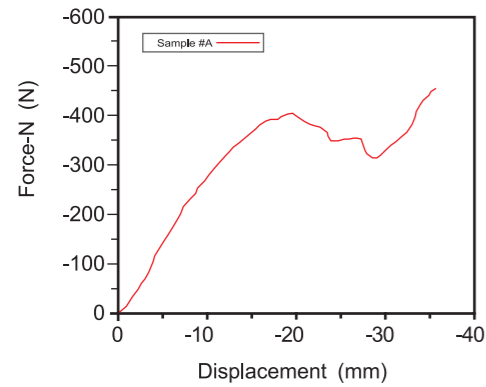
## Spinal Fixation System



TOP-LOADING SYSTEM

THREE POINTS FIXATION  
MONOAXIAL & POLYAXIAL SCREWS

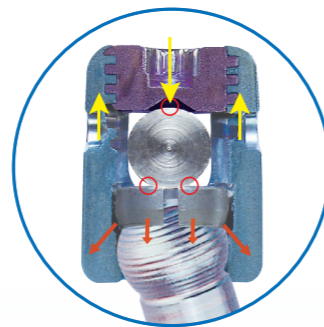
Static Construct Test (Polyaxial Screw) (ASTM F1717)  
HL90125/2007/Spinal Fixation System (Polyaxial Screw)



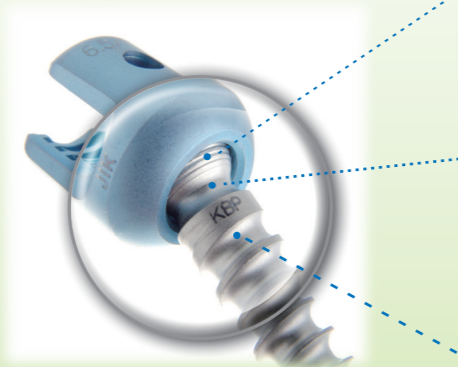
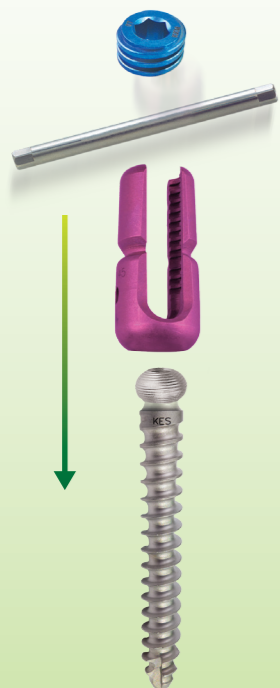
Compressive bending ultimate load 355 N

Static Torsional Test (ASTM F1717)

Screw	Poly-axial Screw
Mode	Torsion
Yield Strength	10.07 Nm
Stiffness	3.44 Nm/degree
Yield angular displacement	4.81 degree



Three-pointed fixation



**Screw Head**

With micro steps provide a solid locking mechanism.

**Screw Neck**

Diameter of shaft maximizes the ultimate strength and optimal fixation. Smooth shaft length allows for one full turn of dorsal adjustment.

**Screw Thread**

Blunt and square cone thread design provides a linear rate of compression that ensures maximum fixation.



**Monoaxial Screw**

Description	Item No.				
	Ø 5.0mm	Ø 5.5mm	Ø 6.0mm	Ø 6.5mm	Ø 7.0mm
L 30 mm	131-50308				
L 35 mm	131-50358	131-55358			131-70358
L 40 mm	131-50408	131-55408	131-60408	131-65408	131-670408
L 45 mm		131-55458	131-60458	131-65458	131-70458
L 50 mm			131-60508	131-65508	131-70508
L 55 mm				131-65558	

**Monoaxial Long Arm Screw**

Description	Item No.				
	Ø 5.0mm	Ø 5.5mm	Ø 6.0mm	Ø 6.5mm	Ø 7.0mm
L 30 mm	136-50308				
L 35 mm	136-50358	136-55358		136-65358	136-70358
L 40 mm	136-50408	136-55408	136-60408	136-65408	136-70408
L 45 mm		136-55458	136-60458	136-65458	136-70458
L 50 mm			136-60508	136-65508	136-70508
L 55 mm				136-65558	

**Polyaxial Screw**

Description	Item No.				
	Ø 5.0mm	Ø 5.5mm	Ø 6.0mm	Ø 6.5mm	Ø 7.0mm
L 35 mm		134-5535R			134-7035R
L 40 mm		134-5540R	134-6040R	134-6540R	134-7040R
L 45 mm		134-5545R	134-6045R	134-6545R	134-7045R
L 50 mm			134-6050R	134-6550R	134-7050R
L 55 mm			134-6055R	134-6555R	

Color code with screw cup size

**Polyaxial Long Arm Screw**

Description	Item No.				
	Ø 5.0mm	Ø 5.5mm	Ø 6.0mm	Ø 6.5mm	Ø 7.0mm
L 35 mm		139-5535F(R)			
L 40 mm		139-5540F(R)	139-6040F(R)	139-6540F(R)	
L 45 mm		139-5545R(R)	139-6045F(R)	139-6545F(R)	
L 50 mm			139-6050F(R)	139-6550F(R)	
L 55 mm			139-6055F(R)	139-6555F(R)	

Color code with screw cup size

※ Other sizes available upon request