

PAN ANTERIOR CERVICAL DISC PROSTHESIS



**Perfect for
cervical spine
stabilization**

Pan Anterior Cervical Disc Prosthesis HIGHLIGHTS

- ♀ Permits a physiological range of motion
- ♀ Provides max adherence to vertebrae
- ♀ Allows continuing and protection of the segment movement
- ♀ One piece, made of biocompatibility titanium alloy



PAN ANTERIOR CERVICAL DISC PROSTHESIS



PURPOSE OF USAGE

- ♀ Cervical Sterile Spinal Prosthesis used for a motion preserving treatment of degenerative cervical disc disease. It is intended to preserve the physiological mobility of the cervical spine.
- ♀ The specific motion pattern, physiological center of rotation and the shape of prosthesis-plates ensure the best possible adaption to natural anatomy and biomechanics of the patient for a fast reduction/elimination of pain/neurological deficits and a long term preservation of motion patterns and the protection of adjacent levels.

INDICATIONS

- ♀ Herniated nucleus pulposus
- ♀ Spondylosis
- ♀ Radiculopathy
- ♀ Myelopathy
- ♀ Herniated disc
- ♀ Loss of disc height

PAN ANTERIOR CERVICAL DISC PROSTHESIS



PAN DISC PROSTHESIS

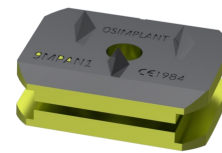
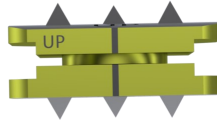
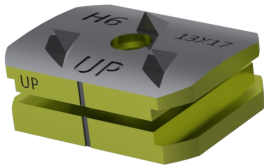
Size	Reference Number
12X14 - H4.5	ON121445
12X14 - H5	ON121405
12X14 - H6	ON121406
12X14 - H7	ON121407

Size	Reference Number
13X15 - H4.5	ON131545
13X15 - H5	ON131505
13X15 - H6	ON131506
13X15 - H7	ON131507

Size	Reference Number
13X17 - H4.5	ON131745
13X17 - H5	ON131705
13X17 - H6	ON131706
13X17 - H7	ON131707

Size	Reference Number
15X15 - H4.5	ON151545
15X15 - H5	ON151505
15X15 - H6	ON151506
15X15 - H7	ON151507

Size	Reference Number
15X17 - H4.5	ON151745
15X17 - H5	ON151705
15X17 - H6	ON151706
15X17 - H7	ON151707



TD-SP-3-3/24.08.2020/R00

Address

Mustafa Kemal Mahallesi, 2133. Sok No: 4/2
Royale Office PC: 06510 Çankaya/Ankara, Turkey

Phone

+90 312 473 82 80

Email

sales@osimplant.com.tr