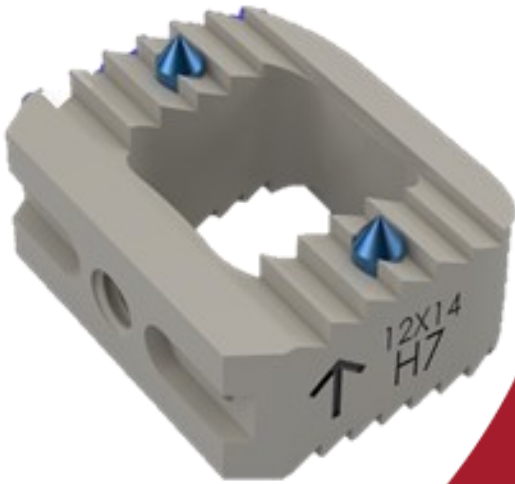


BIA CERVICAL PEEK CAGE



**Perfect for
provide
cervical
fusion.**

BIA Cervical PEEK Cage HIGHLIGHTS

- ♀ PEEK raw material
- ♀ Tantalum X-ray markers provides visualization of the cage
- ♀ Maximizes fusion area through spacer
- ♀ Resists migration forces in all directions
- ♀ Allows restoration of the height of the intervertebral space
- ♀ Sharp teeth on surface of implant allows extraordinary grip





GENERAL USAGE

BIA Cervical PEEK Cages are used for reconstruction of anterior spinal column defects. They can be used to fill discectomy defects in degenerative, traumatic and neoplastic indications. Placing a cage at the distance where discectomy is performed is a routine practice in cervical disc surgery applications. The main purpose here is to provide intervertebral fusion, to prevent the collapse of the distance due to the evacuated disc, and to protect / restore the foraminal height in craniocaudal.

INDICATIONS

- ♀ Vertebral body destruction with kyphosis
- ♀ Segmental instability
- ♀ Stabilization after treatment of a herniated cervical intervertebral disc
- ♀ Osteophytosis compressing the nerve roots and/or spinal cord
- ♀ Degenerative intervertebral instability
- ♀ Degenerative disc diseases and spinal instability
- ♀ Cervical spine trauma
- ♀ Radiculopathy
- ♀ Myelopathy
- ♀ Osteomyelitis

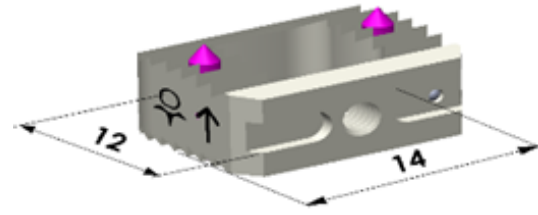




BIA CERVICAL PEEK CAGE

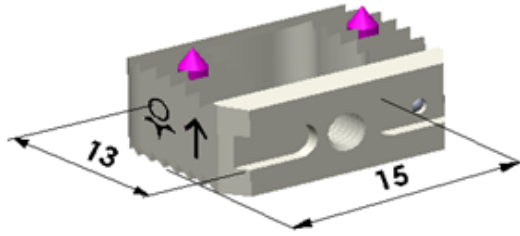
BIA Cervical PEEK Cage (12 x 14 mm)

Size	Reference Number
12X14 - H4	BOSCC412
12X14 - H5	BOSCC512
12X14 - H6	BOSCC612
12X14 - H7	BOSCC712
12X14 - H8	BOSCC812



BIA Cervical PEEK Cage (13 x 15 mm)

Size	Reference Number
13X15 - H4	BOSCC413
13X15 - H5	BOSCC513
13X15 - H6	BOSCC613
13X15 - H7	BOSCC713
13X15 - H8	BOSCC813



Size	Reference Number
13X15 - H4	BOSCC413
13X15 - H5	BOSCC513
13X15 - H6	BOSCC613
13X15 - H7	BOSCC713
13X15 - H8	BOSCC813

BIA Cervical PEEK Cage (14 x 16 mm)

Size	Reference Number
14X16 - H4	BOSCC414
14X16 - H5	BOSCC514
14X16 - H6	BOSCC614
14X16 - H7	BOSCC714
14X16 - H8	BOSCC814

