

3D Printed Screw & Rod System

VENTOTENE

Modular Screw System



Screw Body



Hammer Body



Double Strath



*STANDARD
Cannulated*



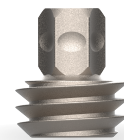
STANDARD



*MONO AXIAL
Cannulated*



*MONO AXIAL
Non Cannulated*



*NEGATIVE
Screw Nut*

- Substantial reduction of inventory.
- Strength comparable to machined screws.
- All implant components sterile packaged.
- Different screw shaft designs, of which most cannulated and fenestrated.
- Dual thread design for optimal fixation in both the Pedicle (Cortical bone) and Vertebral body (Spongious bone).
- Possibility to attach Tulip both before and after implantation of the screw shaft.
- Possibility to remove the Tulip intra-operatively, when needed.

Tulip Available



*STANDARD
Poly Axial*



Poly Axial



*Poly Axial
Long*



*Poly Axial
Extra Long*



*STANDARD
Poly Axial
Long*



*STANDARD
Poly Axial
Extra Long*

- Set screw design: differentiating fixation on implant inserter to assure safe implantation and fixation.
 - Suitable for both Open and MIS surgical procedures.
 - Wide variety of screw lengths, diameters and rod lengths.
 - Reduction/Short MIS Tulip provides 25mm additional internal thread and thus 25 mm. Additional reduction in spondylolistheses cases.
- Titanium alloy rods in $\varnothing 5.0$ mm and $\varnothing 5.5$ mm.

Product Reference Codes



Dimensions				Height
○ ø 4,5 mm	○ ø 5,5 mm	○ ø 6,5 mm	○ ø 7,5 mm	
•	•	•		25 mm
•	•	•	•	30 mm
•	•	•	•	35 mm
•	•	•	•	40 mm
•	•	•	•	45 mm
•	•	•	•	50 mm
•	•	•	•	55 mm
	•	•	•	60 mm
			•	70 mm

BR_REV00_2021 1004

Tsunami Medical S.r.l.

Via XXV Aprile n. 22
 41037 Mirandola (MO) Italy
 Tel. +39.0535.38397
 Fax. +39.0535.38399
www.tsunamimedical.it

CE⁰⁰⁵¹
 UNI EN ISO 13485:2016


 Made in Italy