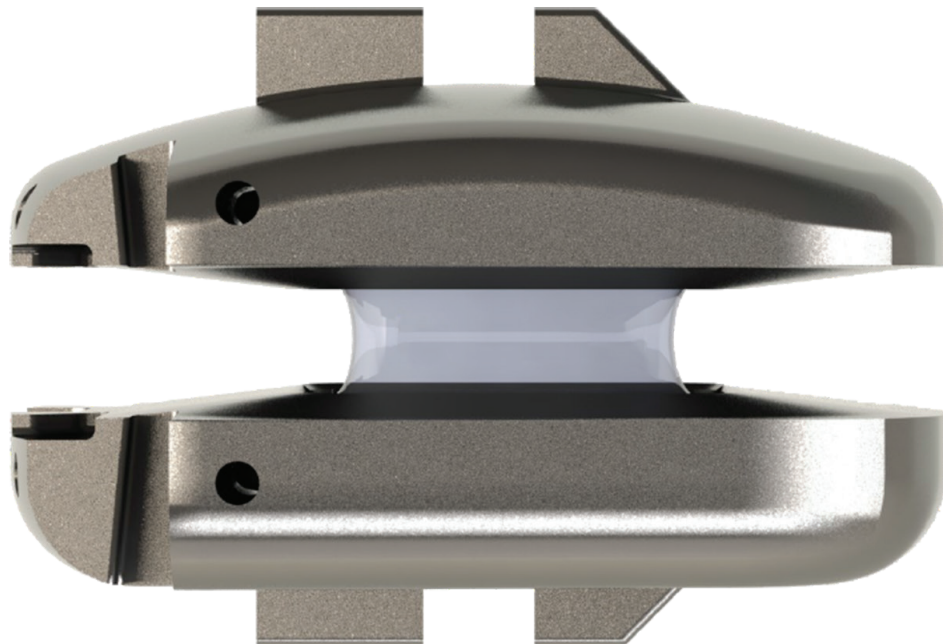


Rhine™

Cervical Disc System



The Rhine Cervical Disc System features a one-piece compressible polymer core design with dome-shaped, plasma-coated endplates and a central-split keel. Proprietary molding technology is designed to minimize wear between the polymer core and metal endplates. The streamlined instrumentation is designed to simplify the surgical technique by providing multiple options depending on surgeon's preferences.

Rhine Cervical Disc System

Proprietary molding technology

Designed to minimize wear between polymer core and metal



Compression implant offering

Heights



Footprints



Rhine Cervical Disc System

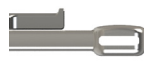
- Cervical artificial disc replacement
- One-piece compressible polymore core
- Central-split keel
- Titanium plasma-coated endplates
- Domed shape for anatomical placement
- Up to 15° circumferential range of motion
- 12 x 15, 14 x 17, and 16 x 19mm footprints available
- 6 and 7mm heights available

Modular instrumentation

- Versatile Trial options:
 - Independent Keel Cutters allow for additional control
 - Integrated Keel Cutters on Trials designed to reduce steps
- Trials designed to match implant height and footprint
- Adjustable stop on Trials and Inserter allow for tactile placement



Trial 12x15x6



Without Keel Cutter



With Keel Cutter

Spine division

This document is intended solely for the use of healthcare professionals. A surgeon must always rely on his or her own professional clinical judgment when deciding whether to use a particular product when treating a particular patient. Stryker does not dispense medical advice and recommends that surgeons be trained in the use of any particular product before using it in surgery.

The information presented is intended to demonstrate the breadth of Stryker product offerings. A surgeon must always refer to the package insert, product label and/or instructions for use before using any Stryker product. The products depicted are CE marked according to the Medical Device Directive 93/42/EEC. Products may not be available in all markets because product availability is subject to the regulatory and/or medical practices in individual markets. Please contact your Stryker representative if you have questions about the availability of Stryker products in your area.

Stryker Corporation or its divisions or other corporate affiliated entities own, use or have applied for the following trademarks or service marks: K2M, Rhine, Stryker. All other trademarks are trademarks of their respective owners or holders.

RHI-SS-1_26012
Copyright © 2020 Stryker



K2M, Inc.
600 Hope Parkway SE
Leesburg, VA 20175
t: 571 919 2000

www.stryker.com