

X-PS[®]

PS[®]

LorX[®] ACIF

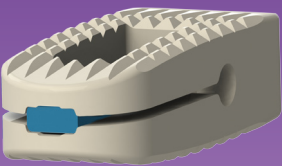
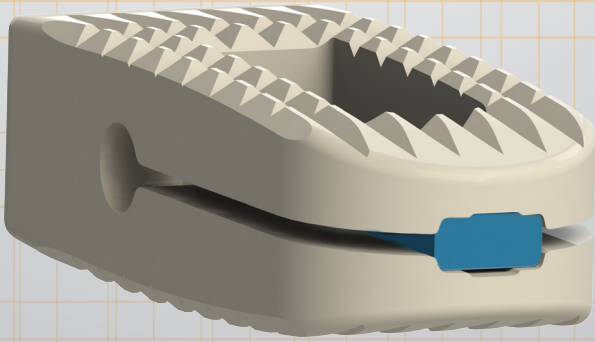
LorX[®] PLIF

LorX[®] TLIF

LorX[®]

NEW

expandable plif peek cage

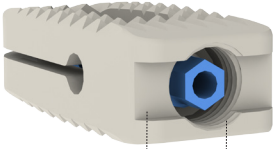


 Tria Spine[®]
...evolution of spine

design features

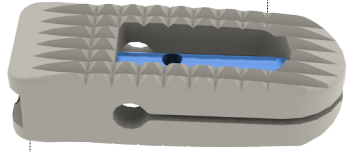
Better stability

Enhanced instrumentation for secure insertion



Anatomical shape

Original and anatomical design for a secure and better placement

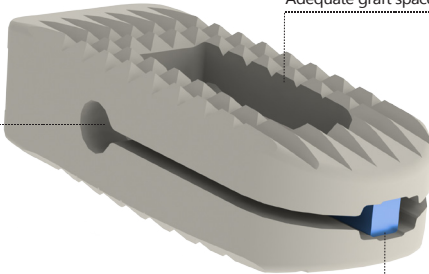


Biocompatibility

Radiolucent and biocompatible PEEK material (VESTAKEEP by Evonik, ASTM F2026) which provides modulus of elasticity similar to the bone

Enhanced bone fusion

Adequate graft space for bone fusion



Special shaft design

Specially designed (patent pending) titanium (ASTM F136) shaft, positioned in the middle of the cage with extra holes for filling bone grafts

Improved mechanism

Improved mechanism for secure expanding and placement

Expandable PLIF PEEK Cage

Ref LX-06-246 : 9X24 mm 6 mm

Ref LX-06-247 : 9X24 mm 7 mm

Ref LX-06-248 : 9X24 mm 8 mm

Ref LX-06-249 : 9X24 mm 9 mm

Ref LX-06-2410 : 10X24 mm 10 mm

Ref LX-06-2411 : 10X24 mm 11 mm

Ref LX-06-2412 : 10X24 mm 12 mm

Ref LX-06-2413 : 10X24 mm 13 mm

Tria Spine Medical Ltd. Co.

Mustafa Kemal Mahallesi 2141. Sok. No: 32/1
06520 Çankaya-ANKARA
TURKEY

Production Facility: Germany & Switzerland

Phone : +90 312 219 41 04
Fax : +90 312 219 41 06
E-mail : info@triaspine.com

www.triaspine.com

Distributed by

