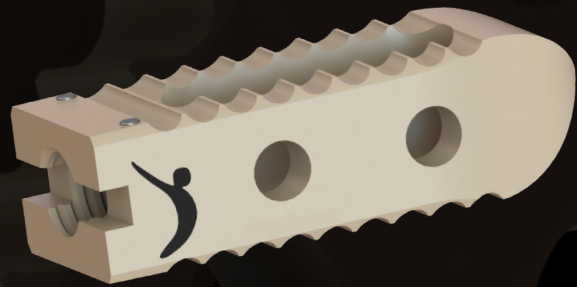
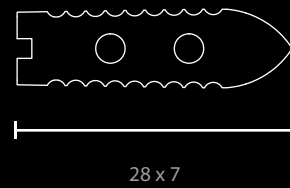
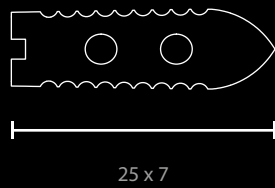


POSTERIOR LUMBAR INTERBODY FUSION PLIF PEEK CAGE

PROCORB™

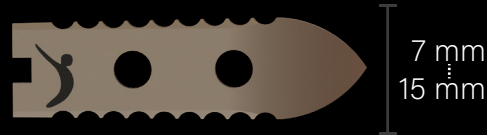


PLIF Peek Cage



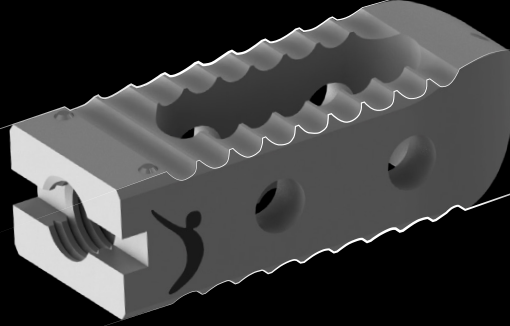
SIZE	REF.CODE
25x7 mm	102.03 002507
25x8 mm	102.03 002508
25x9 mm	102.03 002509
25x10 mm	102.03 002510
25x11mm	102.03 002511
25x12 mm	102.03 002512
25x13 mm	102.03 002513
25x14 mm	102.03 002514
25x15 mm	102.03 002515

SIZE	REF.CODE
28x7 mm	102.03 002807
28x8 mm	102.03 002808
28x9 mm	102.03 002809
28x10 mm	102.03 002810
28x11mm	102.03 002811
28x12 mm	102.03 002812
28x13 mm	102.03 002813
28x14 mm	102.03 002814
28x15 mm	102.03 002815



- Enhanced cage-inserter connection, designed to withstand rotational forces
- X-Ray markers for efficient visualization during implantation
- Toothed surface design to minimize the risk of migration
- Easy to introduce with sharp ended design
- Large fusion space
- Anatomical geometry
- Made of a combination of PEEK (ASTM F2026) which is a polymer based composite material and Ti6Al4V (ASTM F 136). PEEK material's modulus of elasticity is similar to vertebral bodies and it gives radiolucent imaging

Sufficient space for fusion



Reliable geometric form for a successful operation

