

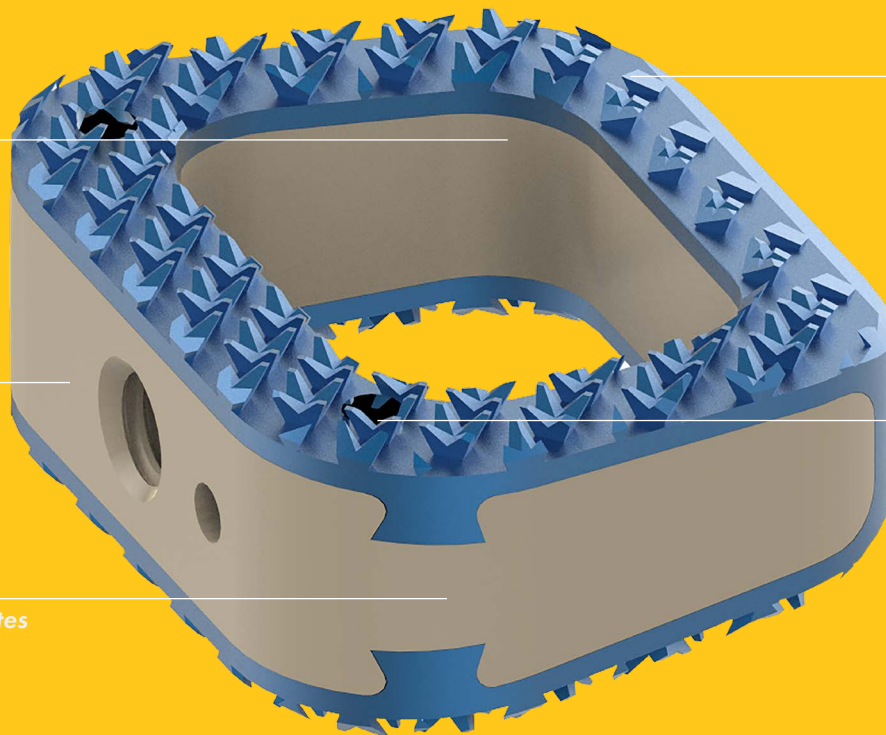


CTL AMERICA
rethink what's possible®

MATISSE™ TI-PEEK

ANTERIOR CERVICAL INTERBODY SYSTEM

The MATISSE™ ACIF Ti-PEEK Cage system is engineered to accommodate a wide range of patient anatomies and surgeon preferences and is available in various footprints, heights and lordotic angles.



Large graft window allows for *maximum graft volume* and *greater likelihood of fusion*

Radiolucent PEEK body for *improved imaging*

Design that *accommodates various patient anatomies* and *resists migration*

Titanium end plate shell *promotes adhesion*

Distinct radiographic markers *ensure proper implant placement*



CTL America's patented TiCro™ design offers up to *200% greater surface area*, improving endplate contact.

This unique surface geometry *enhances bone interlocking properties* and *helps to ensure cage placement*.



Matisse™ ACIF Cage, Titanium-PEEK
W14 x L12 (mm)
0 DEGREE

Part Number	Height (mm)
013.1306	6
013.1307	7
013.1308	8
013.1309	9

Matisse™ ACIF Cage, Titanium-PEEK
W14 x L12 (mm)
6 DEGREE

Part Number	Height (mm)
013.1406	6
013.1407	7
013.1408	8
013.1409	9

Matisse™ ACIF Cage, Titanium-PEEK
W17 x L14 (mm)
0 DEGREE

Part Number	Height (mm)
013.1706	6
013.1707	7
013.1708	8
013.1709	9

Matisse™ ACIF Cage, Titanium-PEEK
W17 x L14 (mm)
6 DEGREE

Part Number	Height (mm)
013.1806	6
013.1807	7
013.1808	8
013.1809	9