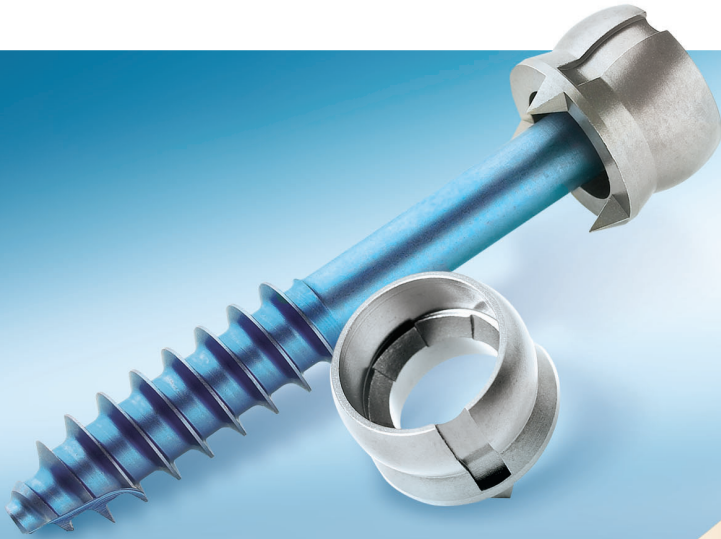




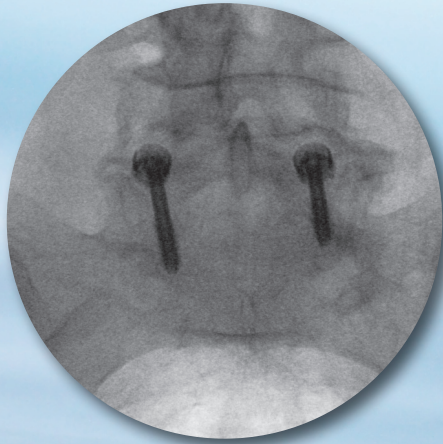
Javelin™ MIS Locking  
Facet System

MIS

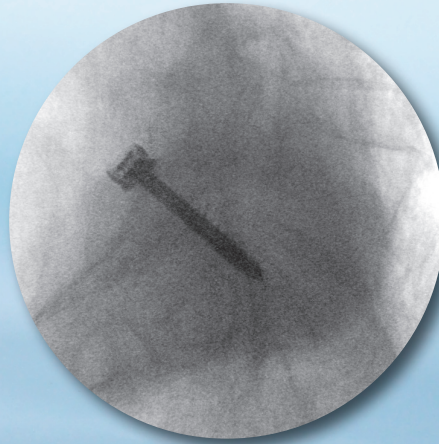


**Your Minimally Invasive Facet Solution...**

The Javelin™ MIS Locking Facet System is the first and only facet system to provide a locking interface between the screw and washer, drastically reducing the chance of rotational screw loosening.



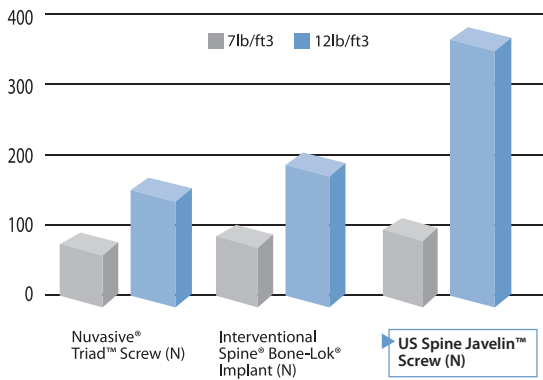
Javelin™ : A/P view



Javelin™ : Lateral view

**PERFORMANCE DATA**

**Pullout Comparison (US Spine vs competitors)**



**Foam Pullout (Avg)**

Foam Density	Nuvasive® Triad™ Screw (N) <sup>1</sup>	Interventional Spine® Bone-Lok® Implant (N) <sup>1</sup>	US Spine Javelin™ Screw (N) <sup>2</sup>
7 pcf	71.56	88.52	93.8
12 pcf	150.38	184.12	362.5

(1) Interventional Spine Bone-Lok Brochure PN7320 Rev. A, DCR672 (2) Data on File, US SPINE

**Unique Locking Feature**

- Interlocking ridges on the mating surfaces between the washer and screw lock the two components together to prevent rotational screw loosening
- Provides a tactile click when the screw is locked

**Minimally Invasive**

- Less post-operative pain and faster recovery
- Javelin implants are inserted over a guide wire
- A full complement of percutaneous instrumentation is included in the system

**Polyaxial Movement**

- Washer-screw interface allows movement through a cone of up to 40° in all directions
- Allows a surgeon the ability to adapt to patient anatomy and various facet surfaces

