



SPINAL FIXATION SYSTEM

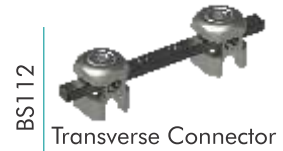
Implanting precision



Bonetech Medisys
Implanting precision

CREER™ Pedicle Screw System

Code BS 426 to BS 428-Monoaxial
BS 429 to BS 431-Polyaxial
& L ø(mm)-4.5,5.5,6.5,7.0.
L(mm)-25 to 70.



EPHORATE™ Pedicle Screw System

Code BS 101 to BS 103-Monoaxial
BS 104 to BS 106-Polyaxial
& L ø(mm)-4.5,5.5,6.5,7.0.
L(mm)-25 to 70.

LOMO™ Pedicle Screw System

Code BS 114 to BS 116-Monoaxial
BS 117 to BS 119-Polyaxial
& L ø(mm)-4.5,5.5,6.5,7.0.
L(mm)-25 to 70.

NOVA™ Posterior Cervical Spine System



BS 212 NOVA- Occfix Plate
L(mm) - 100mm,200mm.

BS 202.T NOVA
BS 204.T Posterior Cervical Screw
L(mm) - 10 to 30.
ø(mm)-3.5,4.0.



BS 211 Tapered Spine Rod
Ø: 3.5/5.5mm.
Length: 200mm, 300mm.



BS 210 NOVA
Pre Bend Connecting Rod
Length: 100mm, 200 mm.



BS 205 NOVA
Posterior Cervical Connecting Rod
Ø-3.5mm Length: 300mm.



BS 207 NOVA- Occipital Plate
L(mm) - 50mm,55mm.

PLUS™ MIS Pedicle Screw System



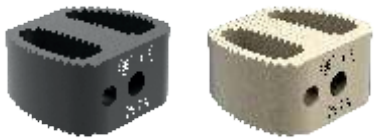
BS 432.T-to
BS 435.T Cannulated Spine Screw
ø(mm)-5.5,6.0,6.5,7.0.
L(mm) - 30 to 60.

Break-off Plug

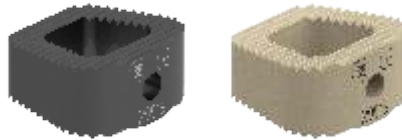
BS 206
Transverse Connector
Rod Length: 50mm to 120mm



Anterior Cervical Spine Fusion Cage



BS408.T
BS416.P | D-Anterior Cervical Cage
Size(mm) - 5,6,7,8,9,10,11.



BS407.T
BS415.P | Duo- Anterior Cervical Cage
Size(mm) - 5,6,7,8,9,10,11.



BS419.T
BS424.P | Autoblock- Anterior Cervical Cage with Screw
Size(mm) - 5,6,7,8,9,10.



BS421.T | AVIATION™ - Cervical Cage
Size(mm) - 5,6,7,8,9,10.



BS420.T | AVIATION™ -P Cervical Cage with plate
Size(mm) - 5,6,7,8,9,10.

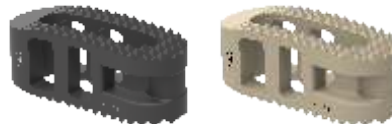


BS 401 | SYMPLEX™ Anterior Cervical Spine Plate
Size(mm) -21 to 70.

Lumber Spine Fusion Cage



BS 438.P
BS 440.T | MANGLIOR™ Plif-Bullet Cage
Length(mm) - 22,26,32.
Size(mm) - 7,8,9,10,11,12,13.



BS 439.P
BS 441.T | MANGLIOR™ Tlif-Banana Cage
L(mm) - 27,30. W(mm) - 10,12.
Size(mm) - 7,8,9,10,11,12,13.



BS 422.T | PRIME™ Expandable Jack cage
Dia(mm) - 12,14,16.
Length(mm) - 20X25, 25X32.5, 30X42.5.



BS 423.T | PRIME™ Expandable Jack cage with plate
Dia(mm) - 12,14,16.
Length(mm) - 20X25, 25X32, 30X42.5.



BS 411.T | Expandable Cage
Dia(mm) - 12,14,16,18.
Length(mm) - 20X25, 25X35, 45X55, 55X75.



BS 409.T
BS 410.T | Mesh Cage
Dia(mm) - 12,14,16,18,20.
Length(mm) - 20 to 100.



TRAUM **A** RTHROSCO **P** ROSTHESIS **S** PINE

FDA · **CE** · **ISO 13485:2016** · **GMP**

- The information in the catalog like design and specification are subject to change without notice.
- Product shown in the catalog is a animated images which may differ from actual products.
- Bonetech Medisys is not responsible for difference between the information in the catalog and the actual implants.

Bonetech Medisys Pvt. Ltd.

📍 50-53 Sarovar Industrial Park,
S.P. Ring Road, Vatva-Hathijan,
A'bad - 382445, Gujarat, India

✉ info@bonetechmedisys.com
sales@bonetechmedisys.com

🌐 www.bonetechmedisys.com