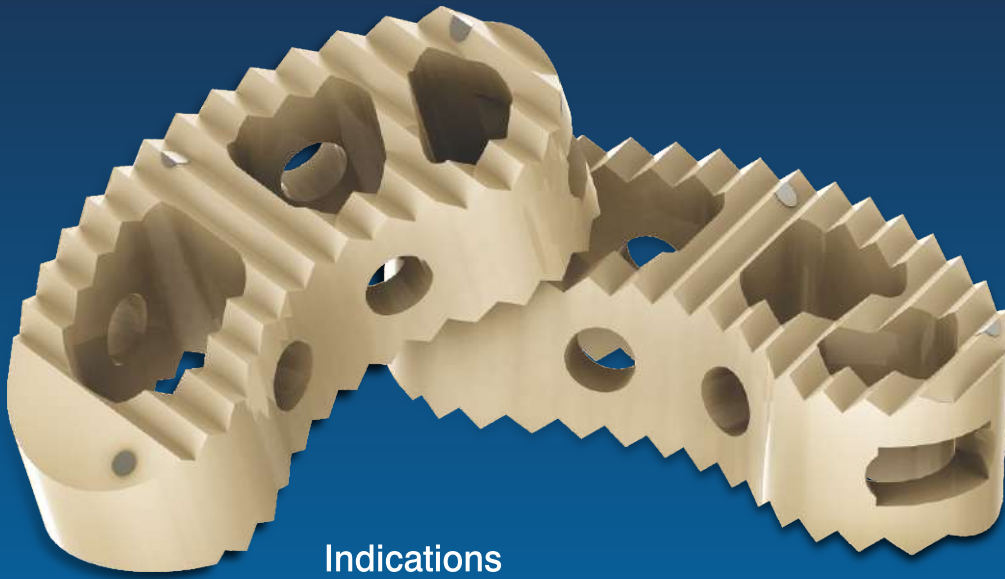




ALC™ - TLIF CAGE PEEK & TITANIUM

A comprehensive system for
transforaminal lumbar interbody fusion.

EFFORTLESS & SAFE



Indications

- Advanced Discopathies
- Extensive Decompression
- Spondylolisthesis
- Failed disc surgery
- Re-current disc herniation
- Post-operative instability
- Lumber pseudarthrosis



- PEEK-VESTAKEEP® material for biocompatibility and radiolucency.
- Titanium marker for clear radiographic implant placement

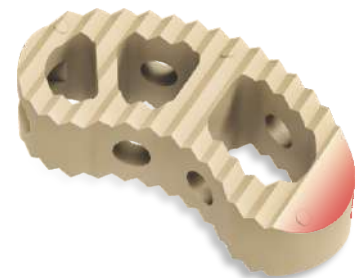
Anatomical Shape



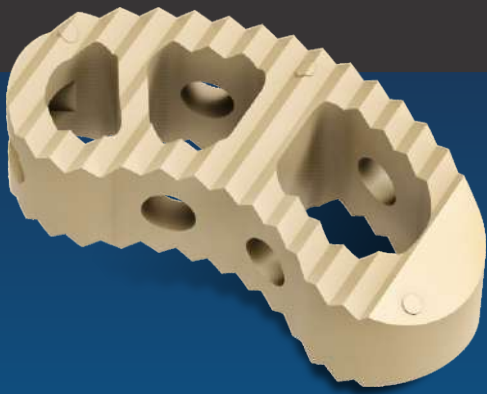
- Biconvex shape and aggressive tooth pattern maximizes end plate contact and stability.



- Shape of the Tlif-cage matches the anatomical curvature of the vertebral body and possess 5° degree lordotic angle, which maintains & restore sagittal balance.



- Tapered tip facilitates easy insertion



- Large graft area allows substantial bone growth.
- Anterior and posterior side holes enables graft vascularization

Touchless



Appropriate size implant is loaded touchless on the TLIF cage introducer.

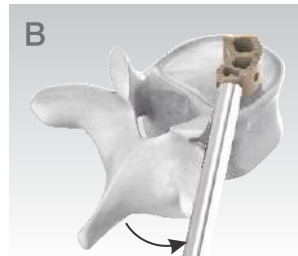
Engaging Cage Introducer



TLIF Cage Insertion



The cage introduce straight into the Intervertebral space.



Incline the introducer laterally a few degrees to incline the cage



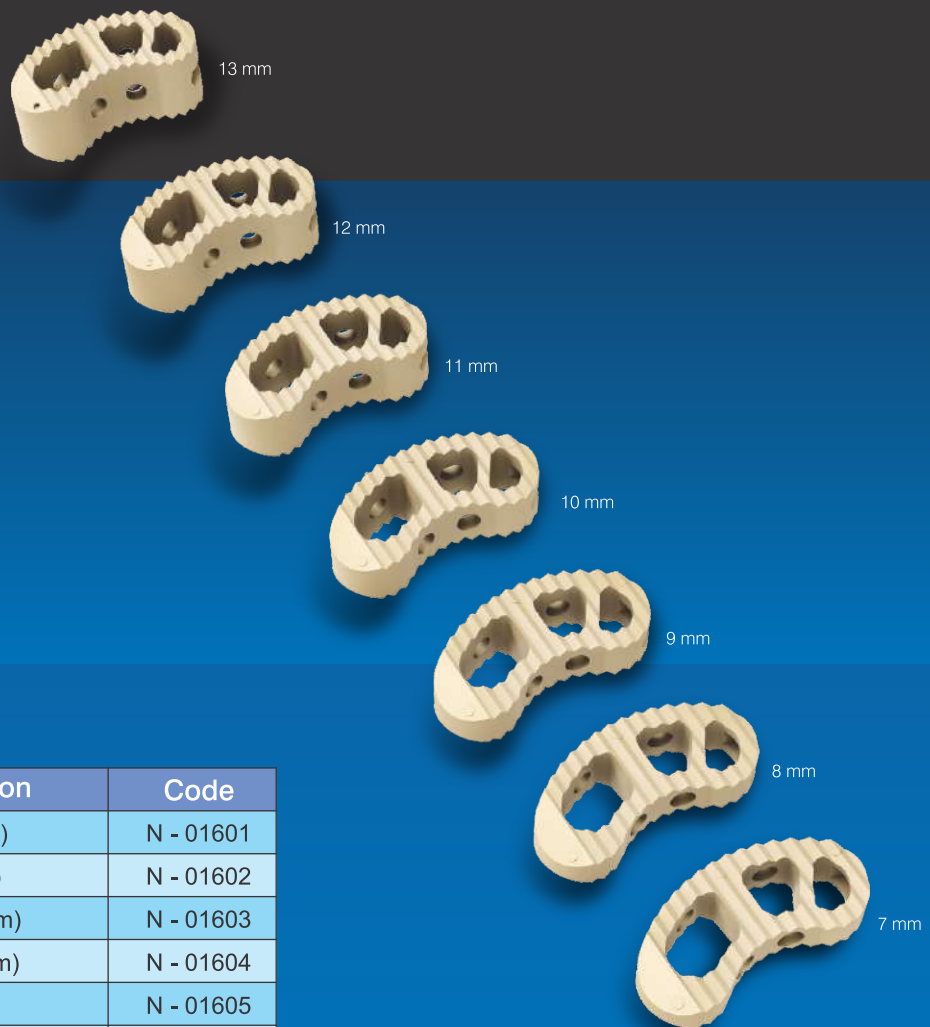
Unscrew the introducer to recover initial position of the introducer. And lock it again.



The cage insertion in the intervertebral space continues till the accurate position is achieved.



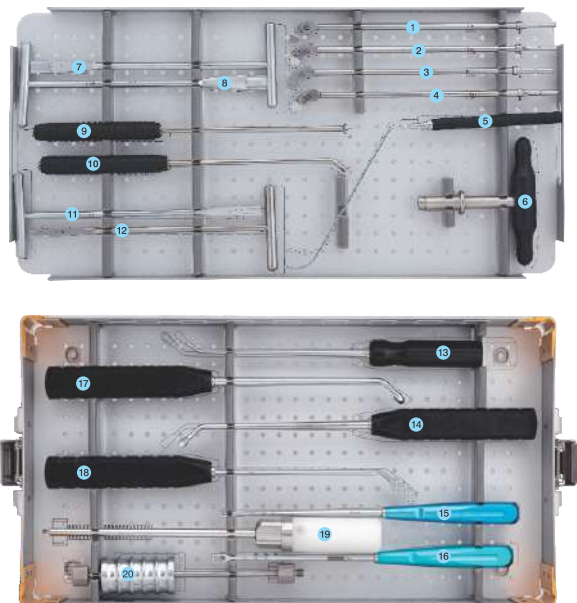
Final placement of the TLIF-cage.



Basic Instrument Set

Sr. No.	Description	Code
1	Tlif cage Trial size (8mm)	N - 01601
2	Tlif cage Trial size(9mm)	N - 01602
3	Tlif cage Trial size (10mm)	N - 01603
4	Tlif cage Trial size (11mm)	N - 01604
5	Nerve root retractors	N - 01605
6	T-Handle for trials	N - 01606
7	Dialators size: (12mm)	N - 01607
8	Dialators size: (14mm)	N - 01608
9	Cage pusher -Straight	N - 01609
10	Cage pusher -Curved	N - 01610
11	Dialators size: (10mm)	N - 01611
12	Dialators size: (8mm)	N - 01612
13	Ring currete	N - 01613
14	Angled currete	N - 01614
15	Box chisel (8mm)	N - 01615
16	Box chisel (6mm)	N - 01616
17	Angled currete	N - 01617
18	Rasp	N - 01618
19	Tlif cage implant holder	N - 01619
20	Slap hammer	N - 01620
21	Tlif cage Trial size (12mm)	N - 01621
22	Tlif cage Trial size(13mm)	N - 01622

Instrument Set



Miraclus Orthotech Pvt. Ltd.

Corporate office :

B-513, Mondeal Square, Opp. Karnavati Club,
Pralahadnagar, Ahmedabad-380015

Plant address :

Plot No. 1112, Phase-3, G.I.D.C., Vatva, Ahmedabad - 382 445.

Phone : +91 79 2583 1332, 2583 1333

Email : contact@miraclus.com | www.miraclus.com