



Silverstone-T IBF System

The Altus Spine **Silverstone-T** IBF System features a state-of-the-art, engineered, self-distracting bullet nose as well as large rigid inserter connection for controlled implant placement. Its 5-degree and 10-degree lordotic angles accommodate the natural curvature of the spine which maximizes stability for the patient. Implants are available in precision machined PEEK, and titanium that incorporates MicroLOC™ surface texturing intended to promote bone growth.

MicroLOC™ Surface
Treatment Technology

Large axial
graft windows

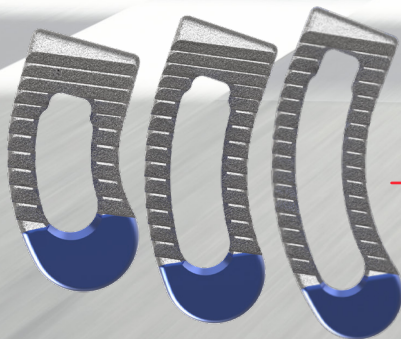
Tapered, self-distracting
bullet nose

Inserter 790-0001

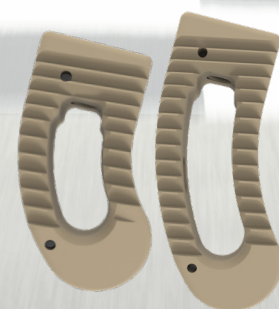
Inserter supports less
invasive procedures

Inserter 790-0001

Titanium Implants
22mm, 28mm and 32mm lengths



PEEK Implants
22mm and 28mm lengths



Implants available
in 6mm – 16mm
heights in 1mm
increments

Refer to Product Insert (PI-009) for complete system description, warnings, and precautions.



©2020 Altus Spine

BR-1602 Rev C

1340 Enterprise Drive
West Chester, PA, 19380
Office: (610) 355-4156
Fax: (610) 300-3049
info@altus-spine.com

www.altus-spine.com