



# Silverstone-P IBF System

The Altus Spine **Silverstone-P** IBF System features a state-of-the-art, engineered, self-distracting bulleted nose for optimal insertion. The bi-convex, anatomically-shaped endplate interface maximizes stability. Implants are available in precision machined PEEK, and titanium that incorporates MicroLOC™ surface texturing intended to promote bone growth.

MicroLOC™ Surface Treatment Technology

Large axial graft windows

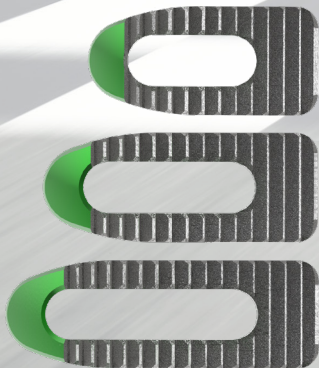
Bi-convex, 7° lordotic interface

790-0001  
Inserter

Inserter supports less invasive procedures

790-0001  
Inserter

**Titanium Implants**  
22mm, 26mm and 30mm lengths



**PEEK Implants**  
22mm, 26mm and 30mm lengths



Implants available in 6mm – 16mm heights in 1mm increments

Refer to Product Insert (PI-009) for complete system description, warnings, and precautions.

