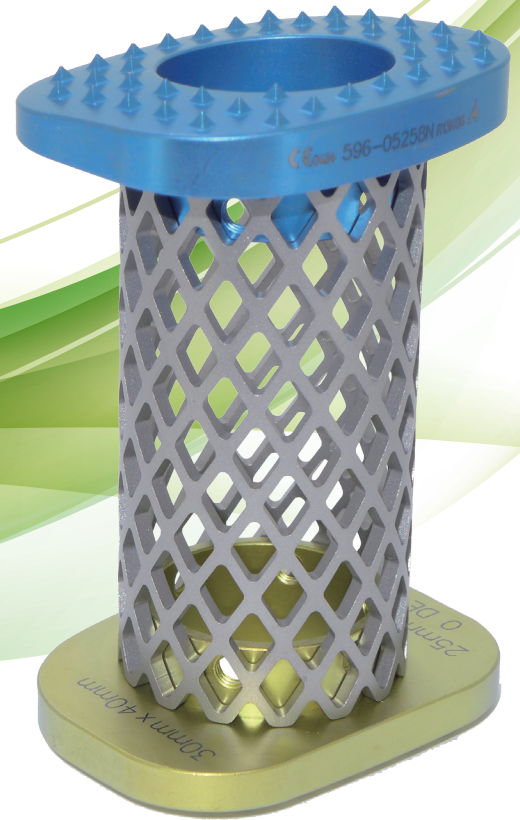
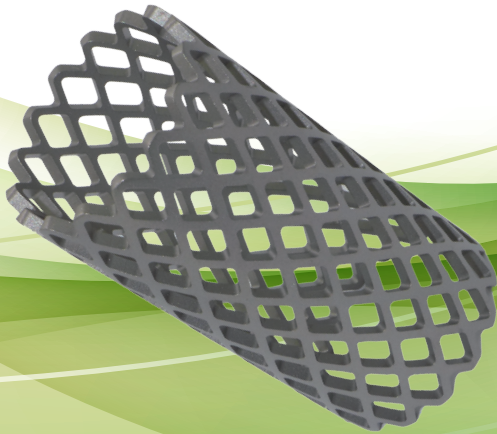


A-Mesh®

Spinal Titanium Mesh

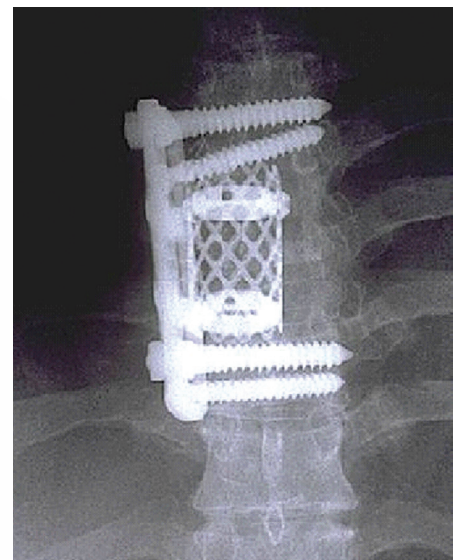


Indications

A-Mesh® Spinal Titanium Mesh is indicated for use in the thoracolumbar spine (i.e., T1 to L5) to replace a diseased vertebral body resected or excised for the treatment of tumors, to achieve anterior decompression of the spinal cord and neural tissues, and to restore the height of a collapsed vertebral body. A-Mesh® Spinal Titanium Mesh is also indicated for use in vertebral fracture or unstable.

Features

- Spinal bone ingrowth Titanium Mesh.
- Versatility Multiple Sizes & Geometries; Trimmable.
- Simplicity in surgical steps.
- Provide stability of body.
- Assembled with Mesh plate to widen that, the contact area is not sharp to prevent implant subsidence.



✓ Mesh Spacer



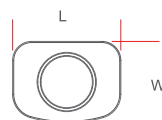
Length	20 mm	50 mm	70 mm
Ø 10mm	596-10202	596-10502	*
Ø 12mm	596-12202	596-12502	*
Ø 14mm	596-14202	596-14502	*
Ø 16mm	596-16202	596-16502	596-16702
Ø 20mm	596-20202	596-20502	596-20702
Ø 25mm	596-25202	596-25502	596-25702
Ø 30mm	596-30202	596-30502	596-30702
Ø 35mm	596-35202	596-35502	596-35702

*order by demand

✓ Mesh Plate



596-XXXX2



596-XXXX8S
(Colorful)

Angulation	0°	5°	8°	10°
Ø 10mm	596-00102	596-05102	*	
Ø 12mm	596-00122	596-05122	*	
Ø 14mm	596-00142	596-05142	*	
Ø 16mm	596-00162	596-05162	*	
Ø 20mm	596-00202	596-05202	596-08202	
Ø 25mm	596-00252	596-05252	596-08252	
Ø 30mm	596-00302	596-05302	596-08302	
Ø 35mm	596-00352	596-05352	596-08352	
L 25mm W 10mm	596-00108S	596-05108S		*
L 27mm W 12mm	596-00128S	596-05128S		*
L 29mm W 14mm	596-00148S	596-05148S		*
L 31mm W 16mm	596-00168S	596-05168S		*
L 35mm W 20mm	596-00208S	596-05208S		596-10208S
L 40mm W 25mm	596-00258S	596-05258S		596-10258S
L 45mm W 30mm	596-00308S	596-05308S		596-10308S
L 50mm W 35mm	596-00358S	596-05358S		596-10358S

*order by demand

✓ Set Screw



Length	L 3.5mm
Ø 3 mm	174-02012N