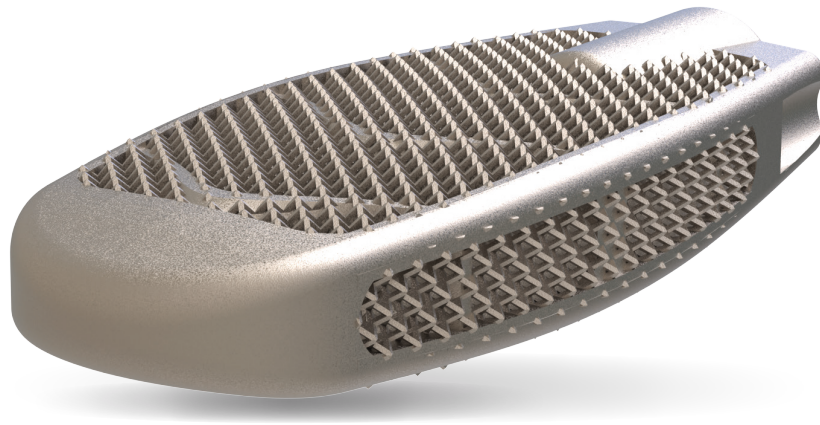


Interbody Fusion Cages

STROMBOLI

DLIF 3D Printed Titanium Cage



Excellent Stability

Additive manufacturing technology in combination with a unique geometrical implant design facilitates efficient and reliable primary and secondary fixation. The unique “net” structure provides strong primary fixation and eliminates the risk of implant migration. The elasticity modulus of the implant is similar to PEEK alternatives and close to natural bone characteristics, which is the key success factor of bone in-growth. Secondary fixation is supported by fast and effective osteointegration.



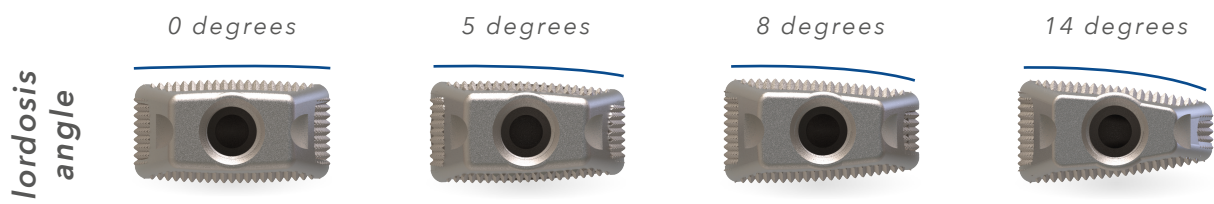
Wide Variety of Dimensions

The design concept of Stromboli, 3D printed DLIF cage, is made to meet well experienced surgeons' requirements.

Tsunami Medical offers anatomically designed implants in a wide range of dimensions, offering just one system matching patients' natural anatomy and surgeons' preferences.

For Stromboli, Tsunami Medical offers four footprints and four possible heights, with four possible lordosis angles.





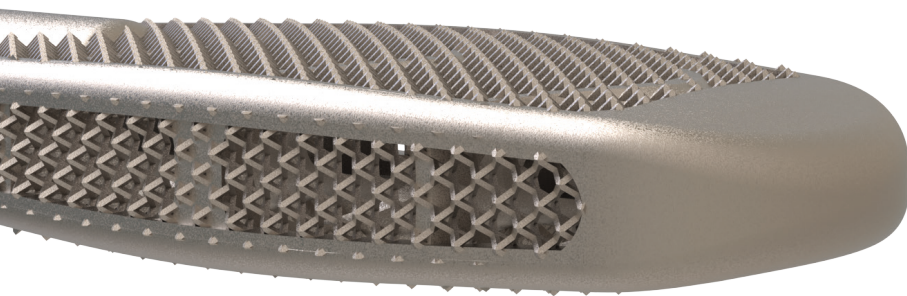
Bone InGrowth Technology®

The anatomically shaped Stromboli, 3D printed DLIF cage, has a unique net structure and a semi-open internal design, which allows a large volume of new bone colonisation.

Both the pore size of the net structure and the surface roughness of the implant edges meet with the ideal dimensions to facilitate fast and effective osteointegration, as described in scientific publications.

Elasticity of the 3D printed titanium geometry facilitates fast new bone formation and offers an excellent platform for Bone InGrowth.

When surgeons deem necessary to add an additional bone growth accelerator, Tsunami Medical's Universal Filling System supports the bone substitute filling procedure, either at pre-implantation or post-implantation stage of the surgical procedure, in an effective way.



Product Reference Codes

Ref. Code	Dimensions
ACX4218**00	Footprint Size 42x18mm - Angle 0° Range of Heights [mm] 07, 09, 11, 13
ACX4218**05	Footprint Size 42x18mm - Angle 5° Range of Heights [mm] 07, 09, 11, 13
ACX4218**08	Footprint Size 42x18mm - Angle 8° Range of Heights [mm] 07, 09, 11, 13
ACX4218**14	Footprint Size 42x18mm - Angle 14° Range of Heights [mm] 07, 09, 11, 13
ACX4818**00	Footprint Size 48x18mm - Angle 0° Range of Heights [mm] 07, 09, 11, 13
ACX4818**05	Footprint Size 48x18mm - Angle 5° Range of Heights [mm] 07, 09, 11, 13
ACX4818**08	Footprint Size 48x18mm - Angle 8° Range of Heights [mm] 07, 09, 11, 13
ACX4818**14	Footprint Size 48x18mm - Angle 14° Range of Heights [mm] 07, 09, 11, 13
ACX5218**00	Footprint Size 52x18mm - Angle 0° Range of Heights [mm] 07, 09, 11, 13
ACX5218**05	Footprint Size 52x18mm - Angle 5° Range of Heights [mm] 07, 09, 11, 13
ACX5218**08	Footprint Size 52x18mm - Angle 8° Range of Heights [mm] 07, 09, 11, 13
ACX5218**14	Footprint Size 52x18mm - Angle 14° Range of Heights [mm] 07, 09, 11, 13
ACX5818**00	Footprint Size 58x18mm - Angle 0° Range of Heights [mm] 07, 09, 11, 13
ACX5818**05	Footprint Size 58x18mm - Angle 5° Range of Heights [mm] 07, 09, 11, 13
ACX5818**08	Footprint Size 58x18mm - Angle 8° Range of Heights [mm] 07, 09, 11, 13
ACX5818**14	Footprint Size 58x18mm - Angle 14° Range of Heights [mm] 07, 09, 11, 13

** Choose preferred height and use it instead of the asterisks to get the final reference.

Tsunami Medical S.r.l.

Via XXV Aprile n. 22
41037 Mirandola (MO) Italy
Tel. +39.0535.38397
Fax. +39.0535.38399
www.tsunamimedical.it



UNI EN ISO 13485:2016



Made in Italy