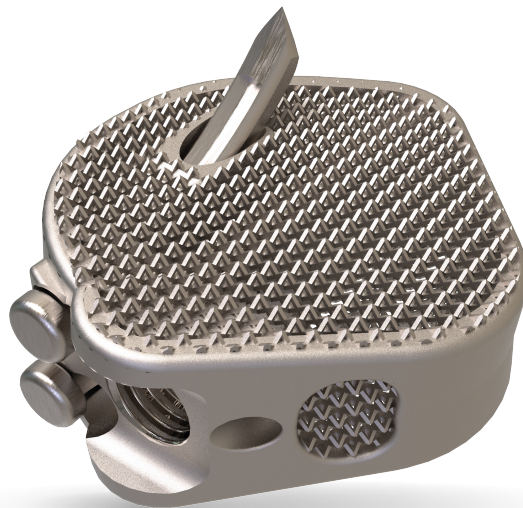


Interbody Fusion Cages

ORTIGIA-J

OLIF 3D Printed Titanium Cage

Built-in Fixation



Excellent Stability



Additive manufacturing technology in combination with a unique geometrical implant design facilitates efficient and reliable primary and secondary fixation.

The unique "net" structure provides strong primary fixation and eliminates the risk of implant migration.

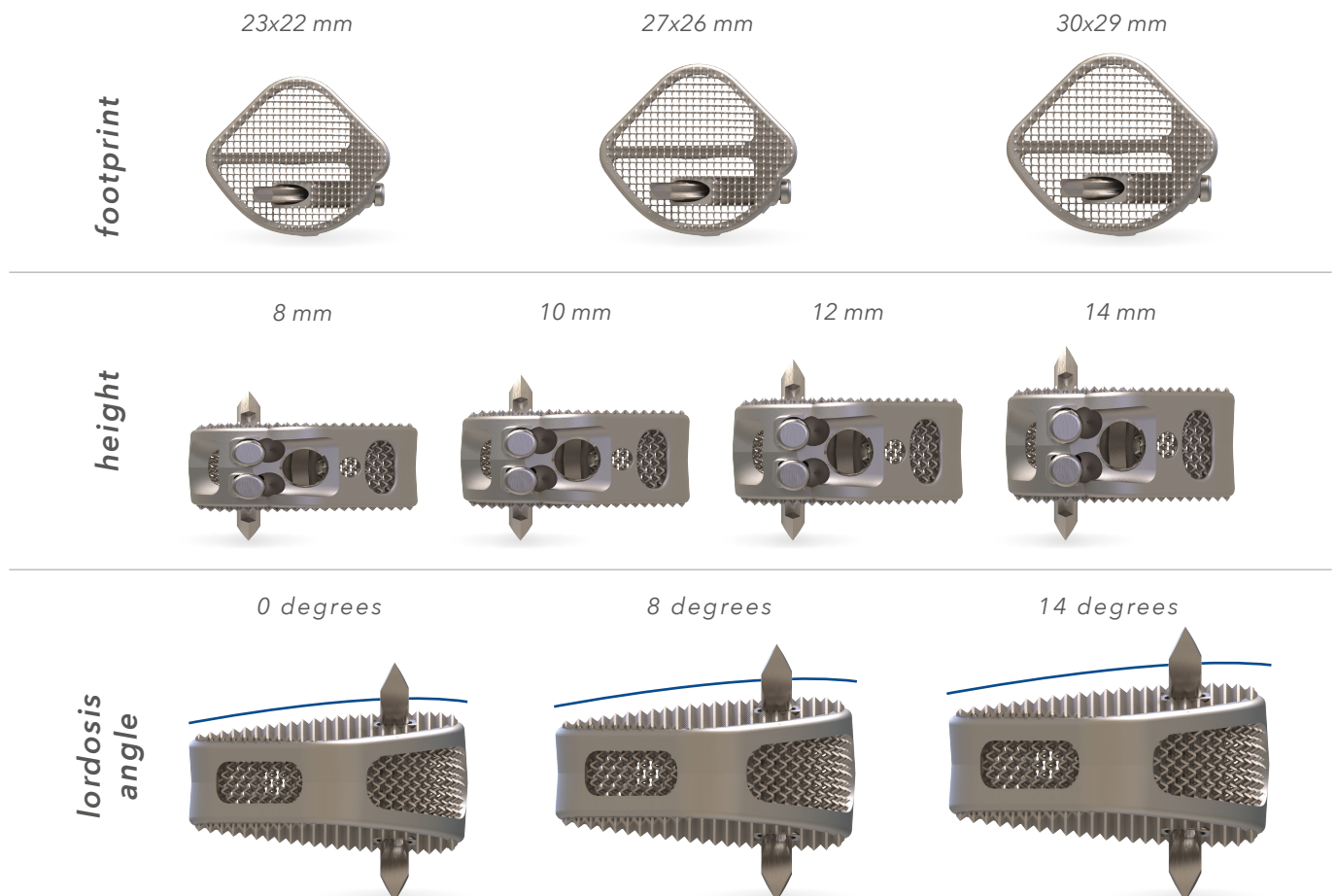
The elasticity modulus of the implant is similar to PEEK alternatives and close to natural bone characteristics, which is the key success factor of bone in-growth. Secondary fixation is supported by fast and effective osteointegration.

Wide Variety of Dimensions

The design concept of Ortigia-J, 3D printed OLIF cage, is made to meet well experienced surgeons' requirements.

Tsunami Medical offers implants in a wide range of footprints, heights, and lordosis angles, offering just one system matching patients' natural anatomy and surgeons' preferences.

For Ortigia-J, Tsunami Medical offers three footprints and four heights, with three possible lordosis angles, as outlined below.



Bone InGrowth Technology®

Ortigia-J, 3D printed OLIF cage, has a unique net structure and a semi-open internal design, which allows a large volume of new bone colonisation.

Both the pore size of the net structure and the surface roughness of the implant edges meet with the ideal dimensions to facilitate fast and effective osteointegration, as described in scientific publications.

Elasticity of the 3D printed titanium geometry facilitates fast new bone formation and offers an excellent platform for Bone InGrowth.

When surgeons deem necessary to add an additional bone growth accelerator, Tsunami Medical's Universal Filling System supports the bone substitute filling procedure, either at pre-implantation or post-implantation stage of the surgical procedure, in an effective way.

Additional Built-in Fixation

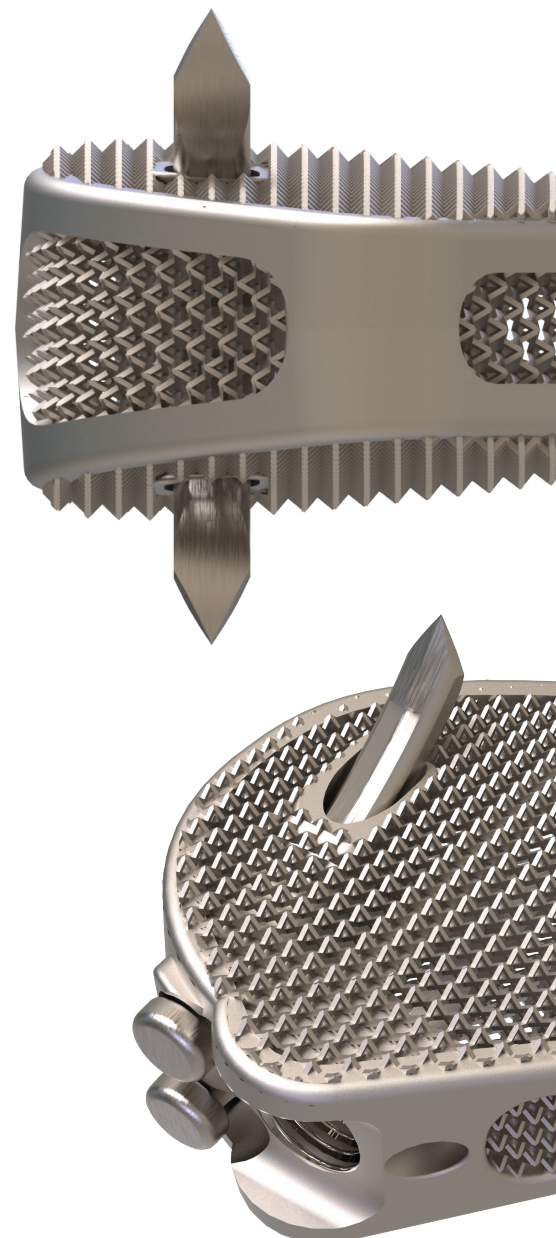
Built-in pins contribute to further enhance primary fixation, as already guaranteed by the excellent stability provided by the "net" structure.

By using pins instead of screws as an additional fixation feature, there is no extra material on the implant required to secure the fixation mechanism. Thus, the elasticity features of the implant are not compromised, allowing for bone in-growth.

The diagonal position of the pins secures rotation stability.

Ortigia-J is manufactured in one production step, thanks to the additive manufacturing technology used.

No additional instruments are required for implantation: the pins are extracted and locked into the implant by a feature on the amended original Ortigia implant inserter. It is possible to retract the pins, when needed.



Product Reference Codes

Ref. Code	Dimensions
AC0J2322**00	Footprint Size 23x22mm - Angle 0° Range of Heights [mm] 08, 10, 12, 14
AC0J2322**08	Footprint Size 23x22mm - Angle 8° Range of Heights [mm] 08, 10, 12, 14
AC0J2322**14	Footprint Size 23x22mm - Angle 14° Range of Heights [mm] 08, 10, 12, 14
AC0J2726**00	Footprint Size 27x26mm - Angle 0° Range of Heights [mm] 08, 10, 12, 14
AC0J2726**08	Footprint Size 27x26mm - Angle 8° Range of Heights [mm] 08, 10, 12, 14
AC0J2726**14	Footprint Size 27x26mm - Angle 14° Range of Heights [mm] 08, 10, 12, 14
AC0J3029**00	Footprint Size 30x29mm - Angle 0° Range of Heights [mm] 08, 10, 12, 14
AC0J3029**08	Footprint Size 30x29mm - Angle 8° Range of Heights [mm] 08, 10, 12, 14
AC0J3029**14	Footprint Size 30x29mm - Angle 14° Range of Heights [mm] 08, 10, 12, 14

** Choose preferred height and use it instead of the asterisks to get the final reference.

Tsunami Medical S.r.l.

Via XXV Aprile n. 22
41037 Mirandola (MO) Italy
Tel. +39.0535.38397
Fax. +39.0535.38399
www.tsunamimedical.it

 0051
UNI EN ISO 13485:2016


Made in Italy