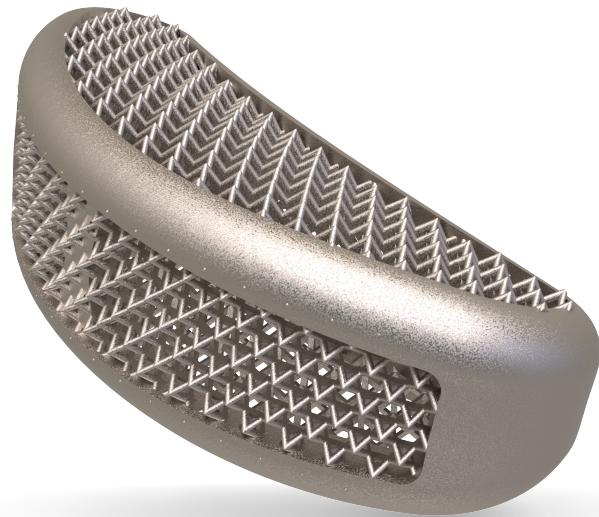


Interbody Fusion Cages

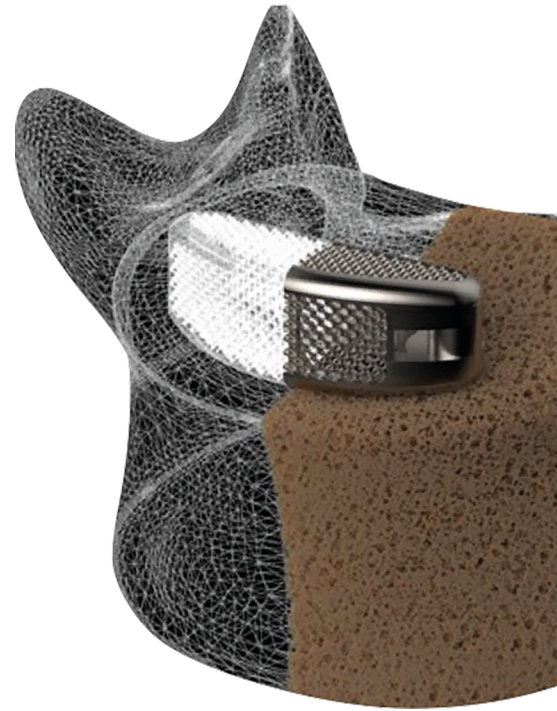
ELBA

TLIF 3D Printed Titanium Cage



Excellent Stability

Additive manufacturing technology in combination with a unique geometrical implant design facilitates efficient and reliable primary and secondary fixation. The unique “net” structure provides strong primary fixation and eliminates the risk of implant migration. The elasticity modulus of the implant is similar to PEEK alternatives and close to natural bone characteristics, which is the key success factor of bone in-growth. Secondary fixation is supported by fast and effective osteointegration.



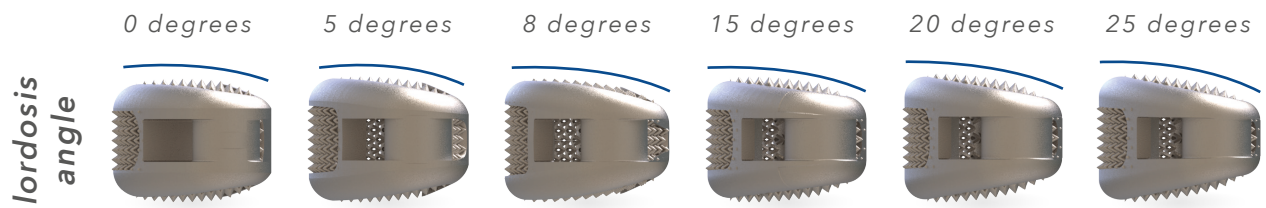
Wide Variety of Dimensions

The design concept of Elba, 3D printed TLIF cage, is made to meet well experienced surgeons' requirements.

Tsunami Medical offers anatomically designed implants in a wide range of dimensions, offering just one system matching patients' natural anatomy and surgeons' preferences.

For Elba, Tsunami Medical offers four footprints and nine possible heights, with six possible lordosis angles.





15, 20 and 25 degrees are available for 32x10 mm footprint only.

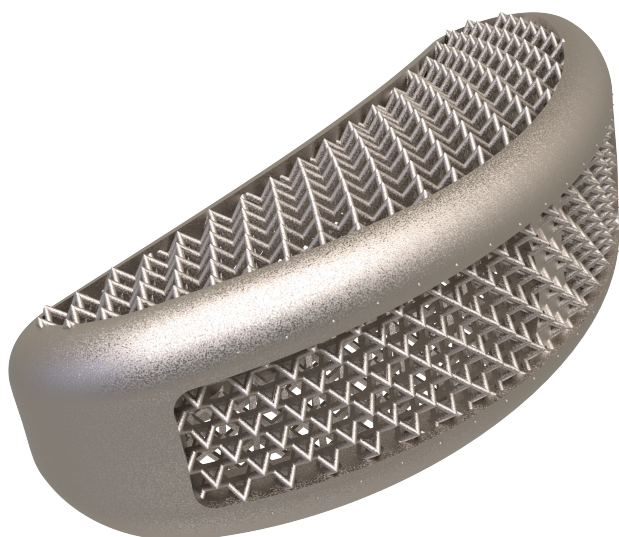
Bone InGrowth Technology®

The anatomically shaped Elba, 3D printed TLIF cage, has a unique net structure and a semi-open internal design, which allows a large volume of new bone colonisation.

Both the pore size of the net structure and the surface roughness of the implant edges meet with the ideal dimensions to facilitate fast and effective osteointegration, as described in scientific publications.

Elasticity of the 3D printed titanium geometry facilitates fast new bone formation and offers an excellent platform for Bone InGrowth.

When surgeons deem necessary to add an additional bone growth accelerator, Tsunami Medical's Universal Filling System supports the bone substitute filling procedure, either at pre-implantation or post-implantation stage of the surgical procedure, in an effective way.



Product Reference Codes

Ref. Code	Dimensions
ACT2609**00	Footprint Size 26x09mm - Angle 0° Range of Heights [mm] 07, 08, 09, 10, 11, 12, 13, 14, 15
ACT2609**05	Footprint Size 26x09mm - Angle 5° Range of Heights [mm] 07, 08, 09, 10, 11, 12, 13, 14, 15
ACT2609**08	Footprint Size 26x09mm - Angle 8° Range of Heights [mm] 07, 08, 09, 10, 11, 12, 13, 14, 15
ACT2909**00	Footprint Size 29x09mm - Angle 0° Range of Heights [mm] 07, 08, 09, 10, 11, 12, 13, 14, 15
ACT2909**05	Footprint Size 29x09mm - Angle 5° Range of Heights [mm] 07, 08, 09, 10, 11, 12, 13, 14, 15
ACT2909**08	Footprint Size 29x09mm - Angle 8° Range of Heights [mm] 07, 08, 09, 10, 11, 12, 13, 14, 15
ACT3209**00	Footprint Size 32x09mm - Angle 0° Range of Heights [mm] 07, 08, 09, 10, 11, 12, 13, 14, 15
ACT3209**05	Footprint Size 32x09mm - Angle 5° Range of Heights [mm] 07, 08, 09, 10, 11, 12, 13, 14, 15
ACT3209**08	Footprint Size 32x09mm - Angle 8° Range of Heights [mm] 07, 08, 09, 10, 11, 12, 13, 14, 15
ACT3210**15	Footprint Size 32x10mm - Angle 15° Range of Heights [mm] 08, 09, 10, 11, 12, 13, 14, 15
ACT3210**20	Footprint Size 32x10mm - Angle 20° Range of Heights [mm] 07, 08, 09, 10, 11, 12, 13, 14, 15
ACT3210**25	Footprint Size 32x10mm - Angle 25° Range of Heights [mm] 07, 08, 09, 10, 11, 12, 13, 14, 15

** Choose preferred height and use it instead of the asterisks to get the final reference.

Tsunami Medical S.r.l.

Via XXV Aprile n. 22
41037 Mirandola (MO) Italy
Tel. +39.0535.38397
Fax. +39.0535.38399
www.tsunamimedical.it

 0051
UNI EN ISO 13485:2016


Made in Italy