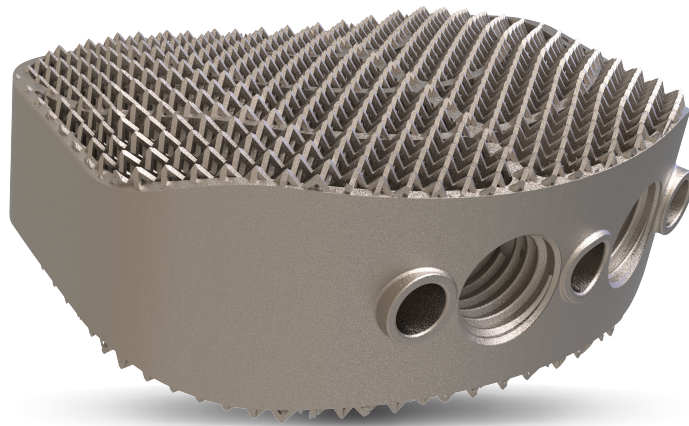


Interbody Fusion Cages

ALICUDI

ALIF 3D Printed Titanium Cage



Excellent Stability

Additive manufacturing technology in combination with a unique geometrical implant design facilitates efficient and reliable primary and secondary fixation. The unique “net” structure provides strong primary fixation and eliminates the risk of implant migration. The elasticity modulus of the implant is similar to PEEK alternatives and close to natural bone characteristics, which is the key success factor of bone in-growth. Secondary fixation is supported by fast and effective osteointegration.

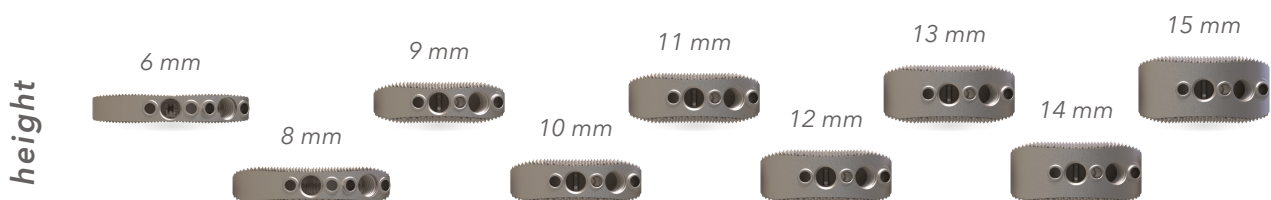
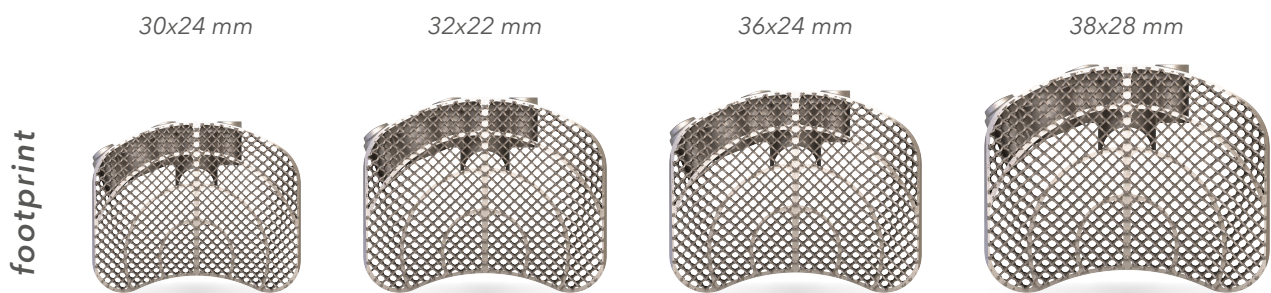


Wide Variety of Dimensions

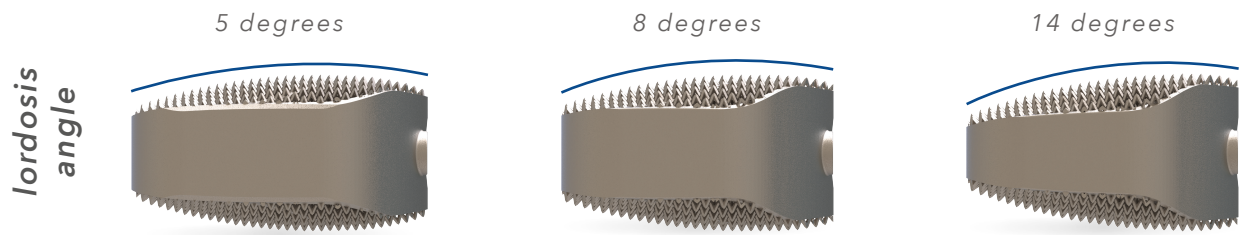
The design concept of Alicudi, 3D printed ALIF cage, is made to meet well experienced surgeons’ requirements.

Tsunami Medical offers anatomically designed implants in a wide range of dimensions, offering just one system matching patients’ natural anatomy and surgeons’ preferences.

For Alicudi, Tsunami Medical offers four footprints and nine possible heights, with three possible lordosis angles.



Selected heights come only in selected footprints and angles.



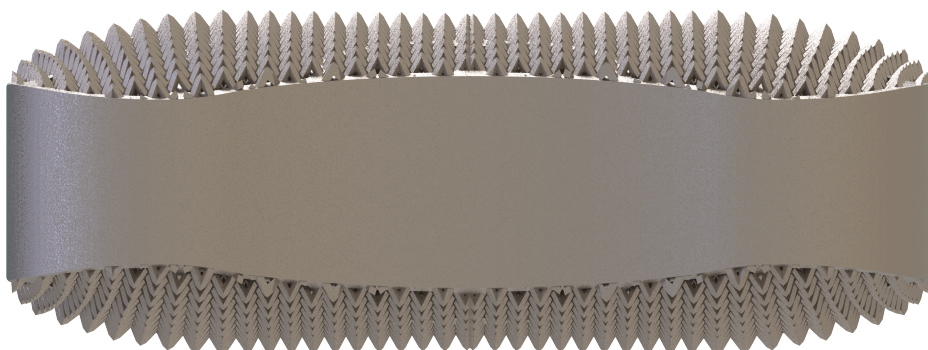
Bone InGrowth Technology®

The anatomically shaped Alicudi, 3D printed ALIF cage, has a unique net structure and a semi-open internal design, which allows a large volume of new bone colonisation.

Both the pore size of the net structure and the surface roughness of the implant edges meet with the ideal dimensions to facilitate fast and effective osteointegration, as described in scientific publications.

Elasticity of the 3D printed titanium geometry facilitates fast new bone formation and offers an excellent platform for Bone InGrowth.

When surgeons deem necessary to add an additional bone growth accelerator, Tsunami Medical's Universal Filling System supports the bone substitute filling procedure, either at pre-implantation or post-implantation stage of the surgical procedure, in an effective way.



Product Reference Codes

Ref. Code	Dimensions
ACA3024**05	Footprint Size 30x24mm - Angle 5° Range of Heights [mm] 09, 10, 11, 12, 13, 14, 15
ACA3024**08	Footprint Size 30x24mm - Angle 8° Range of Heights [mm] 09, 10, 11, 12, 13, 14, 15
ACA3024**14	Footprint Size 30x24mm - Angle 14° Range of Heights [mm] 08, 09, 10, 11, 12, 13, 14, 15
ACA3222**05	Footprint Size 32x22mm - Angle 5° Range of Heights [mm] 06, 08, 10, 12, 14
ACA3222**08	Footprint Size 32x22mm - Angle 8° Range of Heights [mm] 06, 08, 10, 12, 14
ACA3222**14	Footprint Size 32x22mm - Angle 14° Range of Heights [mm] 06, 08, 10, 12, 14
ACA3624**05	Footprint Size 36x24mm - Angle 5° Range of Heights [mm] 06, 08, 10, 12, 14
ACA3624**08	Footprint Size 36x24mm - Angle 8° Range of Heights [mm] 06, 08, 10, 12, 14
ACA3624**14	Footprint Size 36x24mm - Angle 14° Range of Heights [mm] 06, 08, 10, 12, 14
ACA3828**05	Footprint Size 38x28mm - Angle 5° Range of Heights [mm] 09, 10, 11, 12, 13, 14, 15
ACA3828**08	Footprint Size 38x28mm - Angle 8° Range of Heights [mm] 09, 10, 11, 12, 13, 14, 15
ACA3828**14	Footprint Size 38x28mm - Angle 14° Range of Heights [mm] 09, 10, 11, 12, 13, 14, 15

** Choose preferred height and use it instead of the asterisks to get the final reference.

Tsunami Medical S.r.l.

Via XXV Aprile n. 22
41037 Mirandola (MO) Italy
Tel. +39.0535.38397
Fax. +39.0535.38399
www.tsunamimedical.it

 0051
UNI EN ISO 13485:2016


Made in Italy