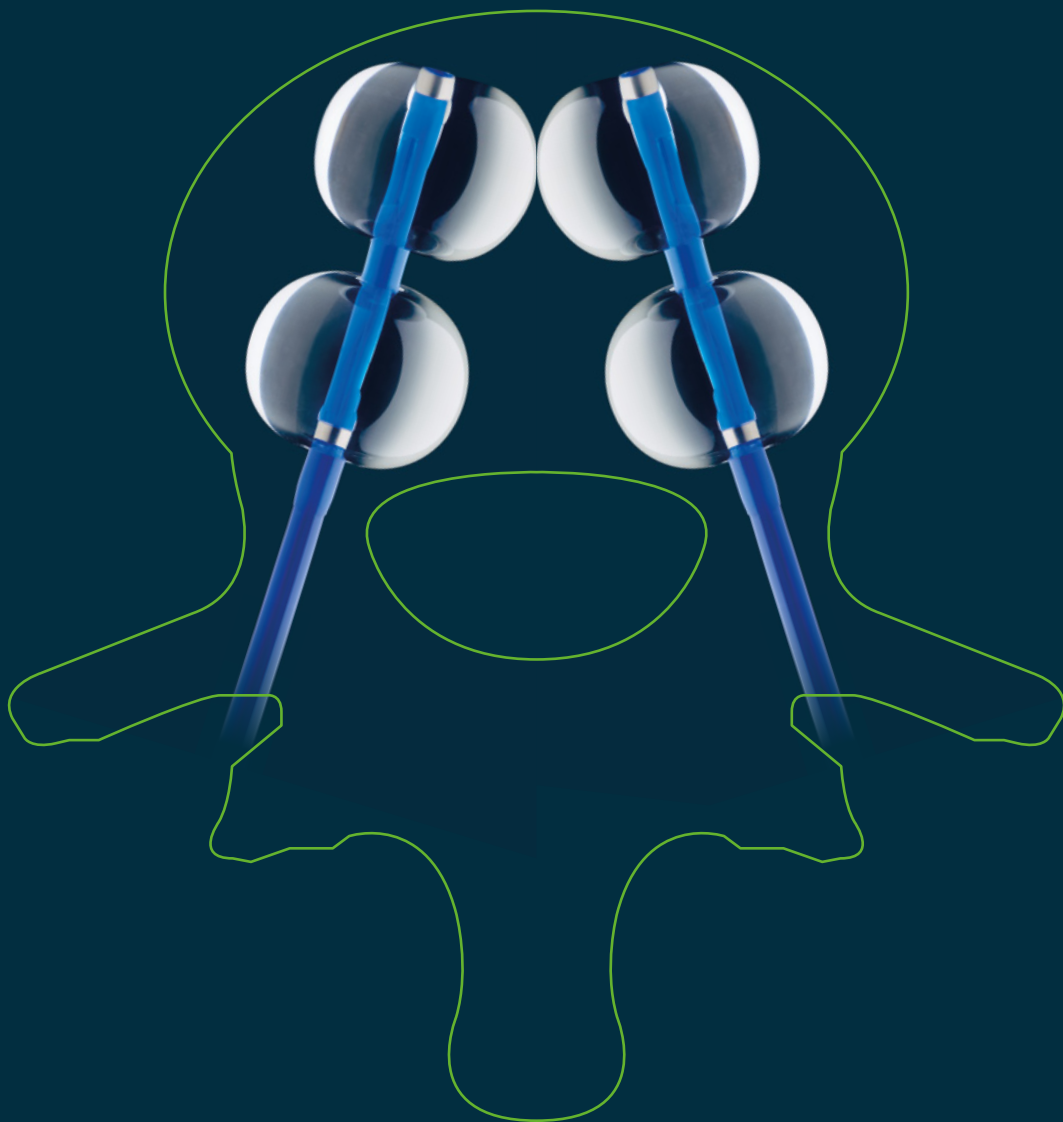


Made in
Germany

Joline®

Stop'n GO Double Balloon

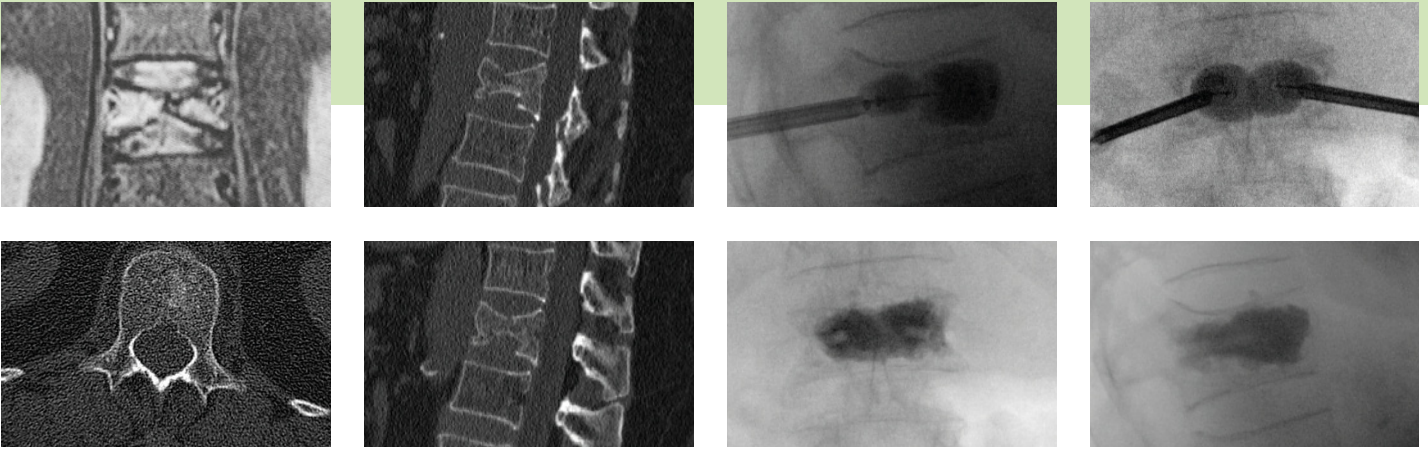
Targeted vertebral body reconstruction
with the strength of **FOUR** balloons.



Balloon Kyphoplasty 2.0

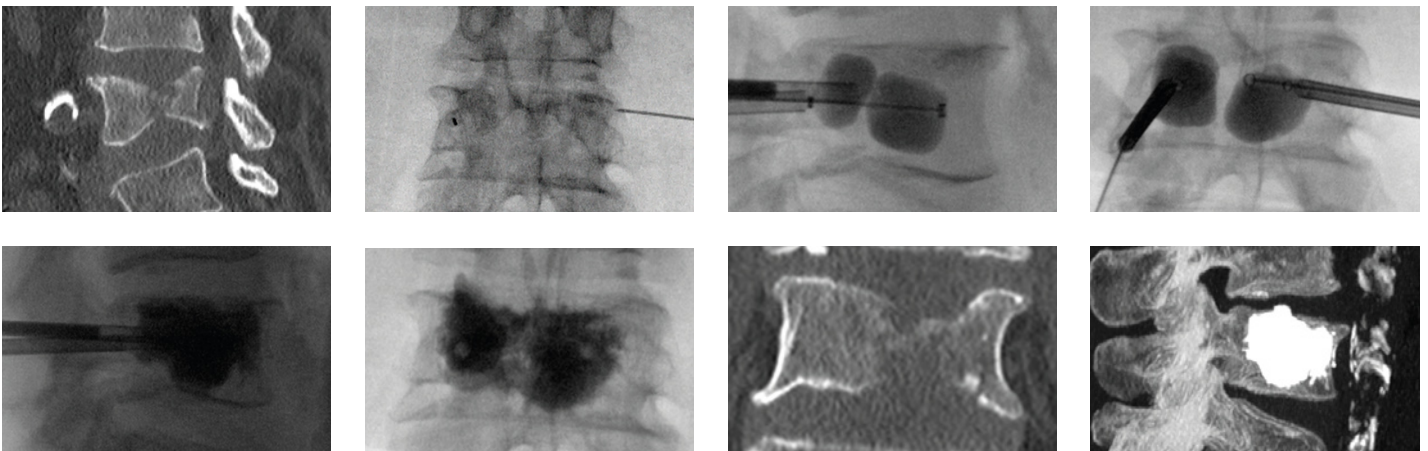
Stop'n GO Double Balloon

Control²



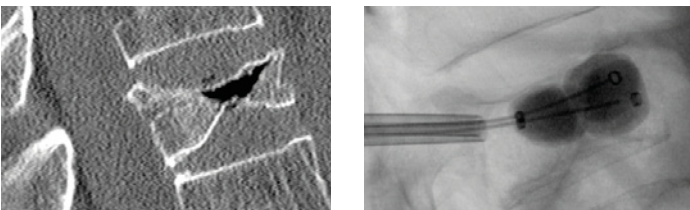
Case study - L1 fracture, A2.1

Patient: female, 66 years, obese
Remembers falling 2 months ago.
She had back pain for the last 3 weeks that could not be managed with conservative treatment.



Case study - multiple myeloma (plasmocytoma)

Patient: male, 66 years
CT4 a few weeks ago, L4 with significant involvement of both endplates.



Case study - dorsalgia (back pain)

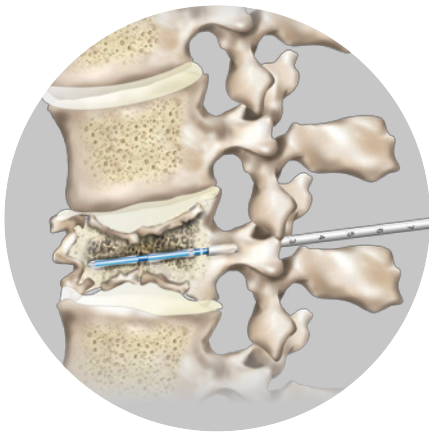
Patient: male, 56 years



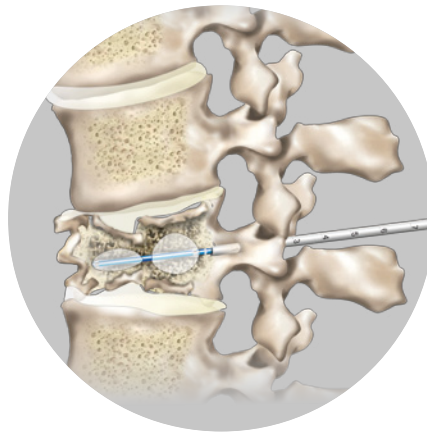
Advantages of 2x2=4 independent balloons:

- Each balloon can be controlled separately, with individual pressure levels and volumes
- Controlled "step-by-step" lifting of the endplates
- Optimised vertebral body reconstruction
- Increased safety

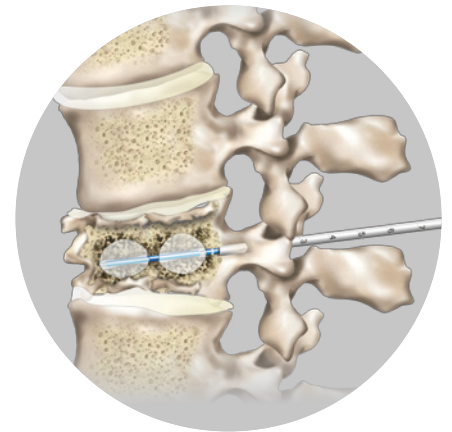
How the double balloon technique works:



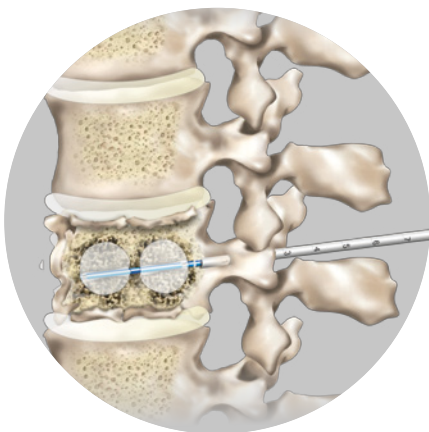
The surgeon can utilise the strength of 4 balloons in the vertebra. (2x2=4 independent balloons)



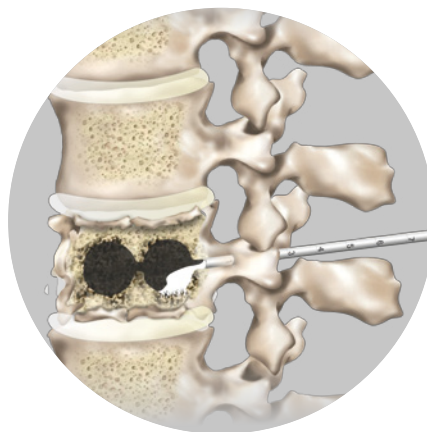
It is possible to actively respond to the variations in bone density in a fractured vertebral body (even in highly complex situations).



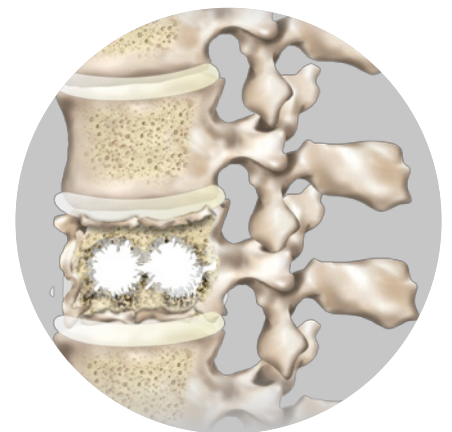
The pressure and volume in the 4 individual balloons can be adjusted individually. Despite the variable resistance in the vertebra, the endplates and heights can be reconstructed with greater uniformity.



Thanks to the 2 anterior "KISSING BALLOONS", the 4 fully inflated balloons create the shape of a horseshoe, ensuring that the cement achieves a mechanically favourable structure in the vertebra.



One of the 4 balloons in the dorsal segment of the vertebral body can be left in situ temporarily whilst the ventral segment is being filled with cement from the opposite side. This technique minimises the loss of correction when removing the balloon prior to applying the cement, and reduces the risk of leakage.



Successful kyphoplasty: vertebra straightened and stabilised.

Stop'n GO order information



Stop'n GO Double Balloon Catheter Order No. S9420*

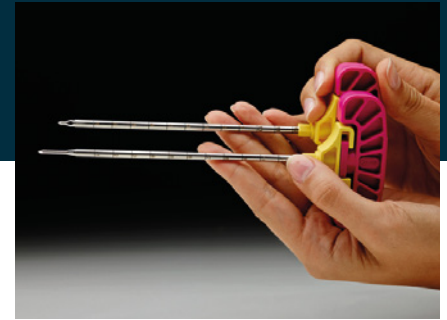
Ø 16 mm, balloon lengths = 2x10 mm,
pressure 27 bar (390 psi)/vol. 2x3 ml

* Contents: double balloon + balloon
adapter + vacuum syringe 20 ml



Vertebra Flexible Filler Device Order No. S9604

Flex plunger (front opening)



SpeedTrack Introducer Cannula & Stylet

Order No. S9311 with long tip
Order No. S9312 with short tip

Stop'n GO Best Kit - order No. S1101

Our optimally equipped comfort kit.

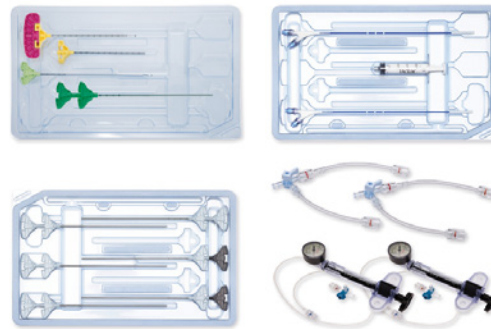


Contents per kit:

2x Vertebra Access Device	1x Vertebra Biopsy Device
2x each Guide Pin, blunt, sharp	1x Vacuum Syringe
1x Vertebra Introducer Device	2x Balloon Adapter
1x Vertebra Introducer Cannula	2x Inflation Device
1x Bone Drill	4x Vertebra Filler Device
2x Stop'n GO Double Balloon Catheter 10/16	2x Vertebra Filler Device Flex
	1x Bone Cement

Stop'n GO SpeedTrack Short Kit - order No. S1117

The kit that offers rapid access, without having to change instruments.



Contents per kit:

1x SpeedTrack Short Tip	2x Balloon Adapter
1x Vertebra Introducer Cannula	2x Inflation Device
1x Vertebra Biopsy Device	4x Vertebra Filler Device
1x Bone Drill	2x Vertebra Filler Device Flex
2x Stop'n GO Double Balloon Catheter 10/16	
1x Vacuum Syringe	



Joline - a modern medical technology company built on tradition

Nestled in the foothills of the Swabian Alb mountains in Germany's southern state of Baden-Württemberg, Joline GmbH & Co. KG has built on a long tradition in the development and production of balloon catheters and has been manufacturing medical products under the highest "Made in Germany" quality standards for more than 15 years. Advanced production technology and medical expertise ensure production consistency and reliability and guarantee exceptional medical product quality in compliance with Germany's high standards.