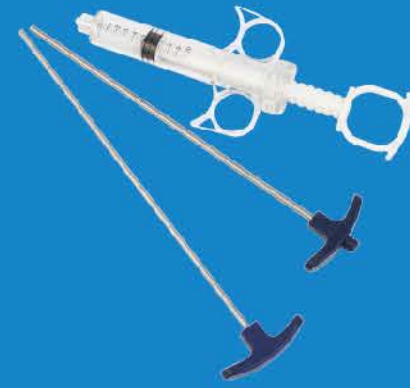


Product Portfolio

Kyphoplasty Surgical Tools — Using for channel establishment and closing, including access, introducer, biopsy, drilling, and BFD



Bone Filling Devices

ESSENT

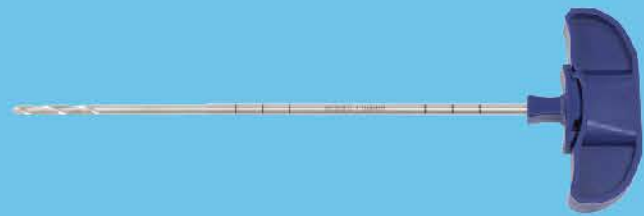
VCF Total Solution



3.0 Access Needle



4.0 Access Needle



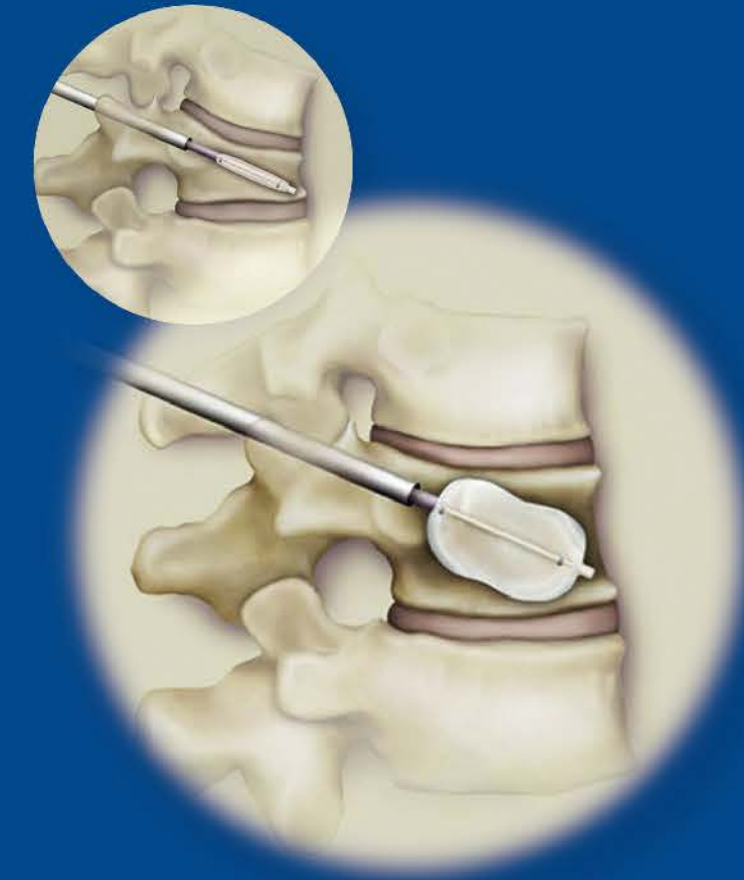
Drill



Introducing System




Biopsy Drill



SCIENCE
APPLY TO LIFE

ESSENT BKP System

IBT Portfolio



IBT size	Length (mm)	Max Volume (cc)	Pressure (psi)
IBT10	10	3	300
IBT15	15	4	300
IBT20	20	5	300

IBT inflation syringe



Easy monitoring of pressure and contrast volume allows for convenient visualization and control of balloon inflation endpoints.

Product pipeline-- ESSENT™ Kits

ESSENT™ Standard Procedure Kits	ESSENT™ One-step Procedure Kits	Cementing System	Additional sets list
<ul style="list-style-type: none"> • 2.6/3.0/3.6 Access system • Inflating Syringe • Introducing system • Biopsy • Drill • Balloon 	<ul style="list-style-type: none"> • 4.0 Access system • Inflating Syringe • Biopsy • Drill • Balloon 	<ul style="list-style-type: none"> • Heraeus Cement • 10ml Syringe • Bone filling Devices 	<ul style="list-style-type: none"> • Marker pen • Ruler • Blade • Hammer • Disposal cup • Spatula/disposal stick

References

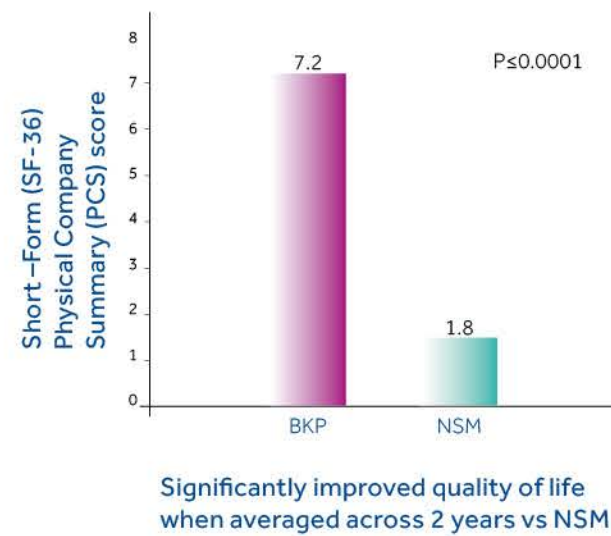
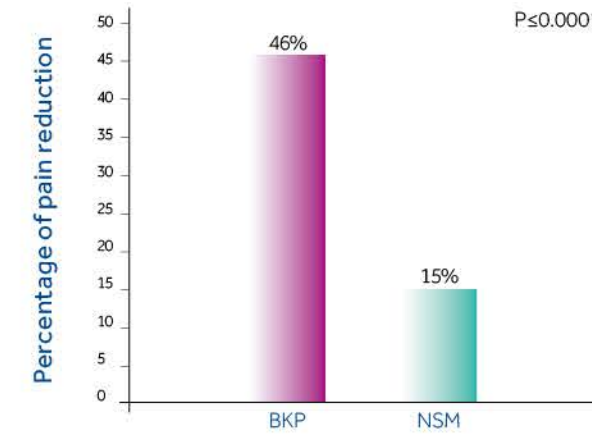
1. Tillman J, Shabe P, Rose M, Elson P, Wülfert E, Ashraf T. Fracture Reduction Evaluation Study 24-month final clinical study report. August 27, 2010. Medtronic Spinal and Biologics Europe BVBA.
2. Van Meirhaeghe J, Bastian L, Boonen S, et al. A randomized trial of balloon kyphoplasty and non-surgical management for treating acute vertebral compression fractures: vertebral body kyphosis correction and surgical parameters. Spine. 2013 38(12), pp 971-985
3. Wardlaw D, Cummings SR, Van Meirhaeghe J, et al. Efficacy and safety of balloon kyphoplasty compared with non-surgical care for vertebral compression fracture (FREE): a randomised controlled trial. Lancet. 2009 Mar 21;373(9668):1016-24.
4. Boonen S, Van Meirhaeghe J, Bastian L, et al. Balloon kyphoplasty for the treatment of acute vertebral compression fractures: 2-year results from a randomized trial. J Bone Miner Res. 2011. Jul;26(7):1627-1637
5. Lindsay R, Silverman S, Cooper C, et al. Risk of new vertebral fracture in the year following a fracture. JAMA. 2001;285(3):320-325.
6. Ross P, Davis J, Epstein R, et al. Pre-Existing Fractures and Bone Mass Predict Vertebral Fracture Incidence in Women. Ann Intern Med. 1991;114(11):919-923.

Clinical Efficacy

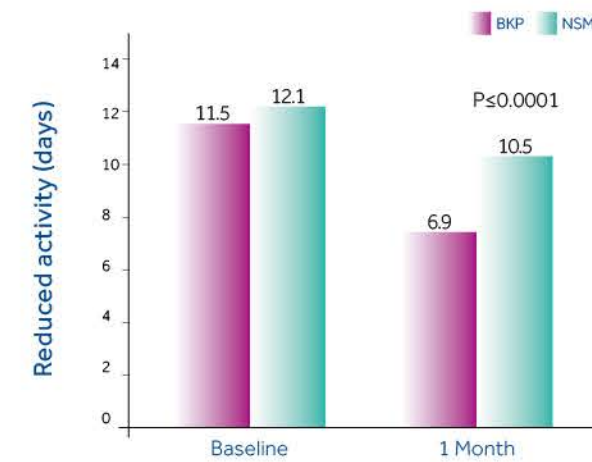
Comparison of Pain, Quality of Life, and Mobility

BKP gains significantly better pain relief results, better Quality of Life, and more mobility days vs NSM

1 3 times greater pain reduction at 1 week vs non-surgical management (NSM) (46% BKP vs 15% NSM); Significantly better pain relief results were seen at 1 month and maintained for up to 2 years vs NSM^[2,3,4]



2 4 times greater improvement in quality of life at 1 month vs NSM. Significantly improved quality of life when averaged across 2 years vs NSM^[2,3,4]

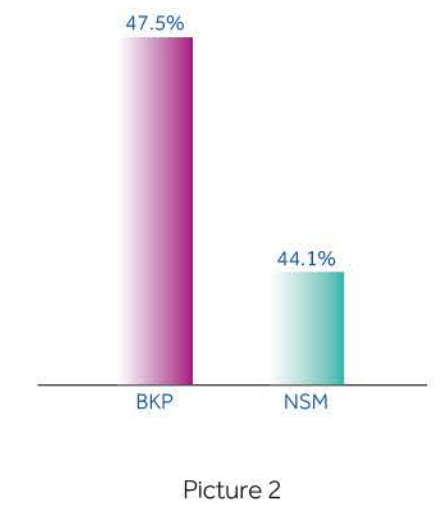
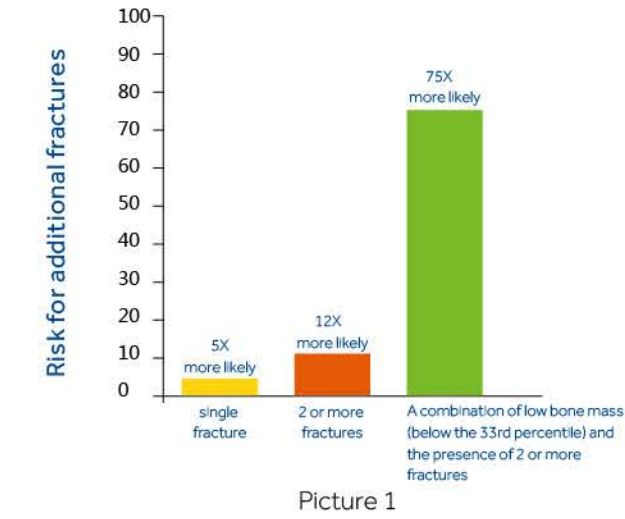


Rapid return to daily activities maintained up to 2 years vs NSM

Subsequent Fracture

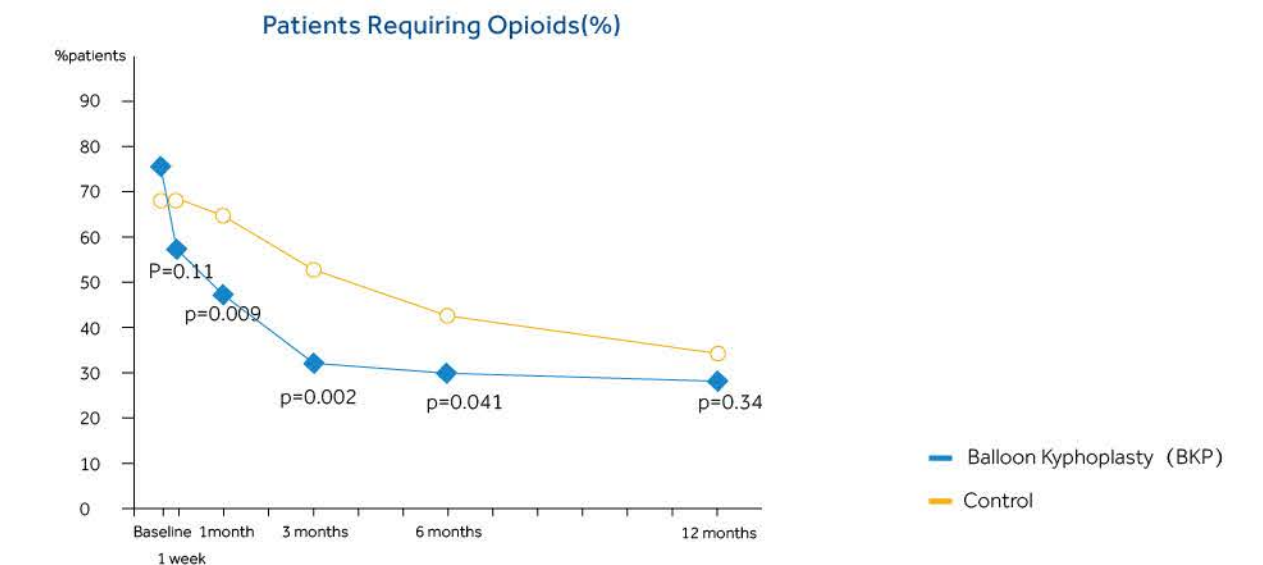
Figure 1: Once a VCF has occurred, the risk for additional fracture increases

Figure 2: Patients treated with BKP showed no additional risk of subsequent fractures vs non-surgical management over the course of 2 years^[3,4,5,6]



Opioid Use

Reduction in patients needing narcotic pain medication from above 70% to below 30% after 1 year with BKP^[3,4]



Kyphotic Angle Correction

BKP Restores Vertebral Kyphotic Angle and is Maintained Long Term. At 24 months, the change in kyphotic angulation was significantly improved with BKP (average 3.1° of correction for BKP compared to 0.8° for NSM, p=0.003)^[2]

