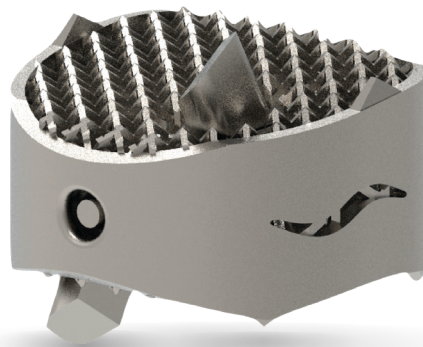


Inter-Body Fusion Cages

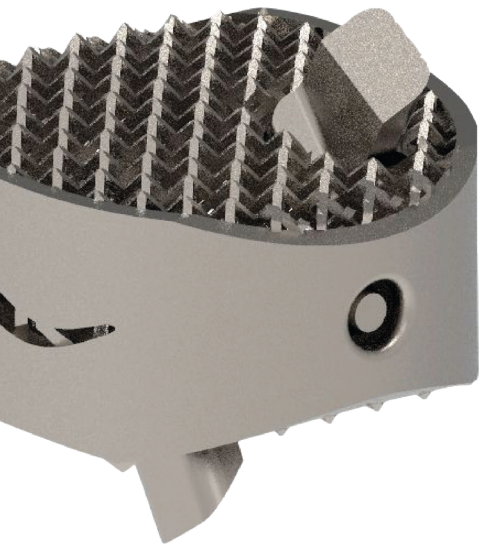
# CAPRI-Z

ACIF 3D Printed Titanium Cage

*Built-in Fixation*



## Excellent Stability



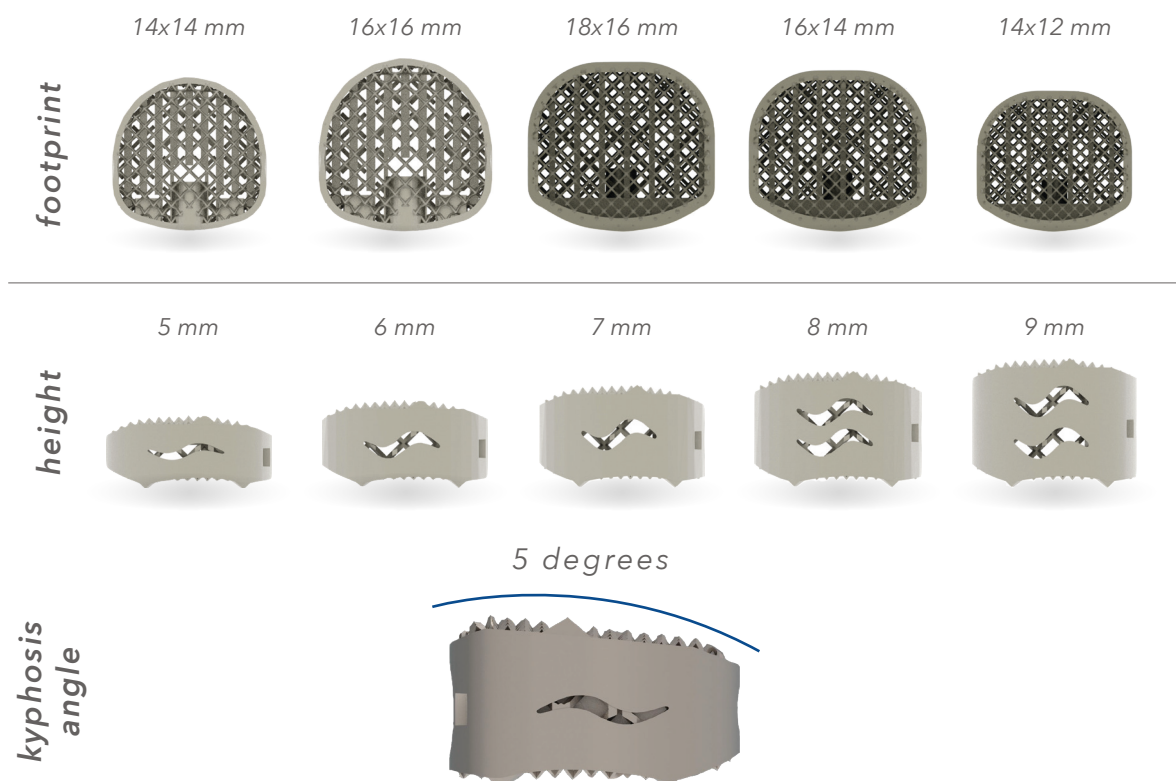
Additive manufacturing technology in combination with a unique geometrical implant design facilitates efficient and reliable primary and secondary fixation. The unique “net” structure provides strong primary fixation and eliminates the risk of implant migration. The elasticity modulus of the implant is similar to PEEK alternatives and close to natural bone characteristics, which is a key success factor of bone in-growth: secondary fixation by supporting fast and effective osteointegration.

## Wide Variety of Footprints & Heights

The design concept of Capri-Z 3D printed ACIF Cage is made to meet well experienced surgeons' requirements.

Tsunami Medical offers anatomically designed implants in a wide range of footprints and heights, providing just one system matching patients' natural anatomy and surgeons' preferences.

For Capri-Z, Tsunami Medical offers five footprints and five heights with a possible kyphosis angle of 5 degrees, as outlined below.



## Bone InGrowth Technology®

The anatomically shaped Capri-Z 3D printed ACIF Cage has a unique net structure and a semi-open internal design, which allows a large volume of new bone colonisation.

Both the pore size of the net structure and the surface roughness of the implant edges meet with the ideal dimensions to facilitate fast and effective osteointegration, as described in scientific publications.

Elasticity of the 3D printed titanium geometry facilitates fast new bone formation and offers an excellent platform for Bone Ingrowth.

When surgeons deem necessary to add an additional bone growth accelerator, Tsunami Medical's Universal Filling System supports the bone substitute filling procedure, either at pre-implantation or post-implantation stage of the surgical procedure, in an effective way.

## Additional Built-in Fixation

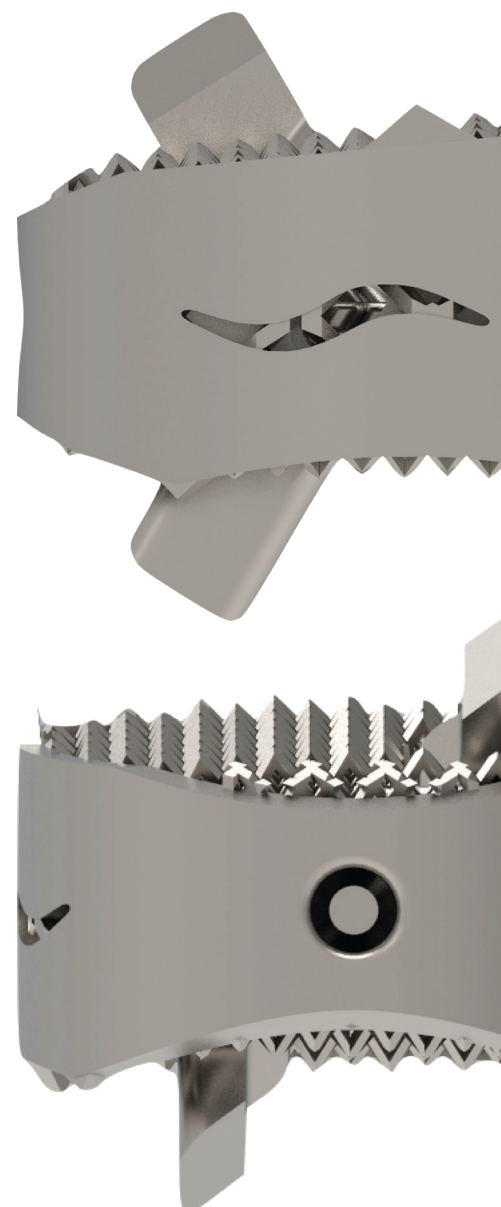
Built-in pins contribute to further enhance primary fixation, as already guaranteed by the excellent stability provided by the "net" structure.

By using pins instead of screws as an additional fixation feature, there is no extra material on the implant required to secure the fixation mechanism. Thus, the elasticity features of the implant are not compromised, allowing for bone in-growth.


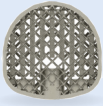
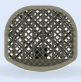
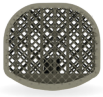
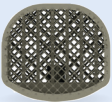
The diagonal position of the pins secures rotation stability.

Capri-Z is manufactured in one production step, thanks to the additive manufacturing technology used.

No additional instruments are required for implantation: the pins are extracted by a feature on the amended original Capri implant inserter. It is possible to retract the pins, when needed.



# Product Reference Codes

Ref. Code	Dimensions	
<b>Square footprints</b>		
ACCZ1414**05	Footprint Size <b>14x14mm</b> - Angle <b>5°</b> Range of Heights [mm] <b>05, 06, 07, 08, 09</b>	
ACCZ1616**05	Footprint Size <b>16x16mm</b> - Angle <b>5°</b> Range of Heights [mm] <b>05, 06, 07, 08, 09</b>	
<b>Rectangular footprints</b>		
ACCZ1412**05	Footprint Size <b>14x12mm</b> - Angle <b>5°</b> Range of Heights [mm] <b>05, 06, 07, 08, 09</b>	
ACCZ1614**05	Footprint Size <b>16x14mm</b> - Angle <b>5°</b> Range of Heights [mm] <b>05, 06, 07, 08, 09</b>	
ACCZ1816**05	Footprint Size <b>18x16mm</b> - Angle <b>5°</b> Range of Heights [mm] <b>05, 06, 07, 08, 09</b>	

\*\* Choose preferred height and use it instead of the asterisks to get the final reference.

## Tsunami Medical S.r.l.

Via XXV Aprile n. 22  
41037 Mirandola (MO) Italy  
Tel. +39.0535.38397  
Fax. +39.0535.38399  
[www.tsunamimedical.it](http://www.tsunamimedical.it)

  
0051  
UNI EN ISO 13485:2016

  
Made in Italy