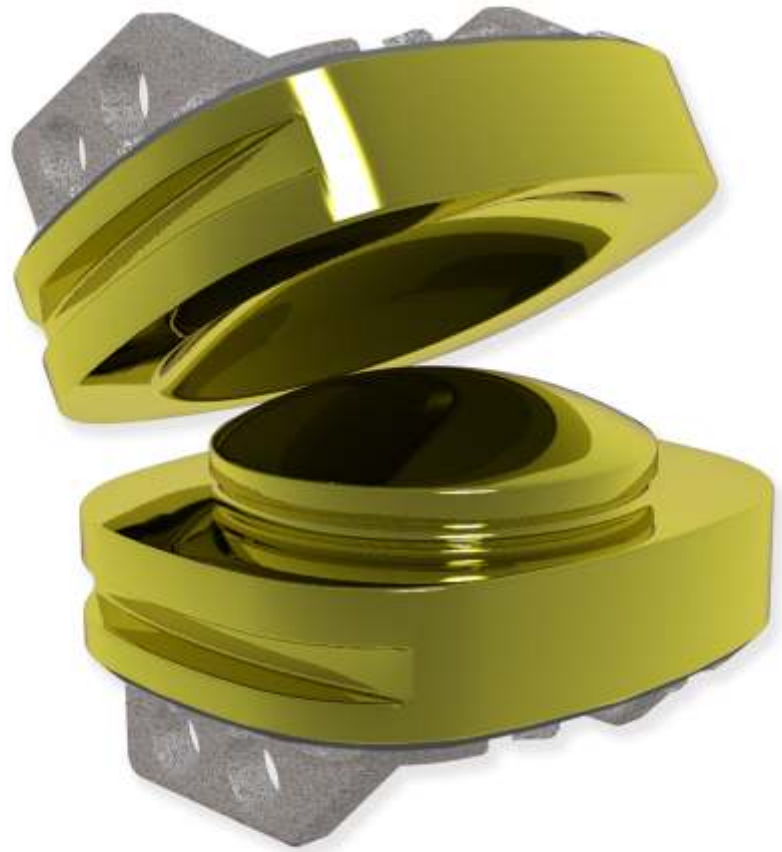
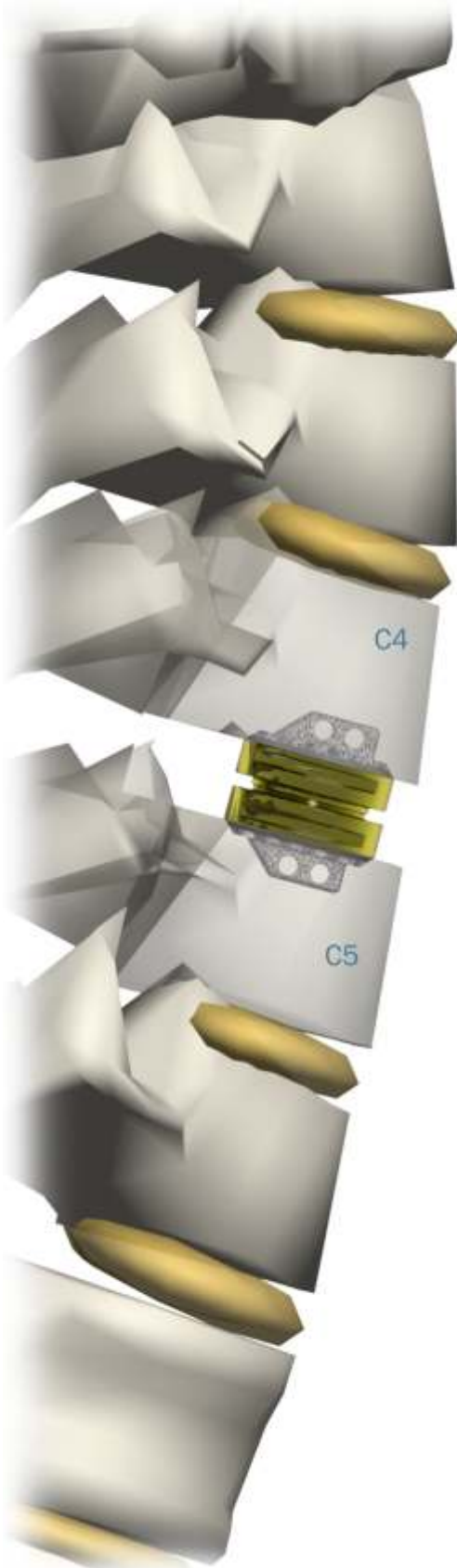


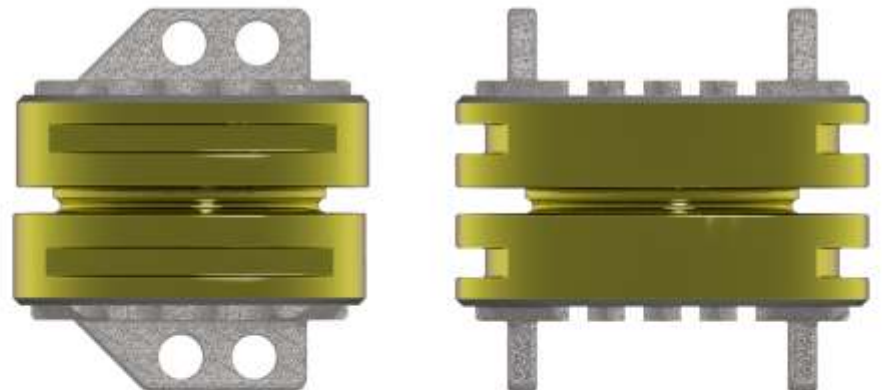


ACD - ANTERIOR CERVICAL DISC

METAL-ON-METAL DUAL KEEL MOBILE DISC REPLACEMENT SYSTEM



2 Part titanium mobile disc replacement with dual keel



ACD - ANTERIOR CERVICAL DISC

METAL-ON-METAL DUAL KEEL MOBILE DISC REPLACEMENT SYSTEM



ACD - ANTERIOR CERVICAL DISC METAL-ON-METAL DUAL KEEL MOBILE DISC REPLACEMENT SYSTEM

Description

Cat#

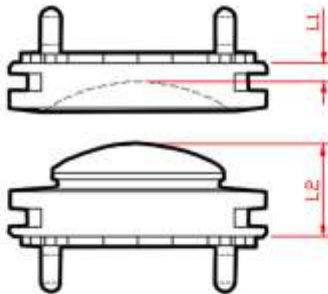
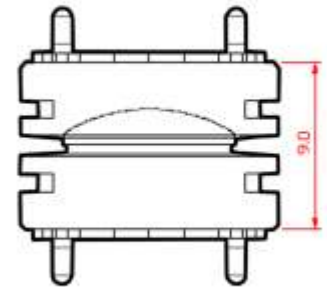
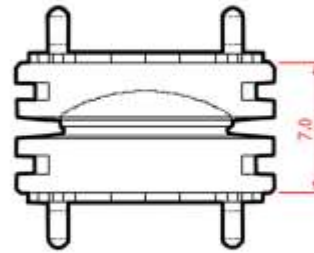
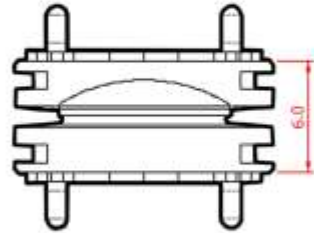
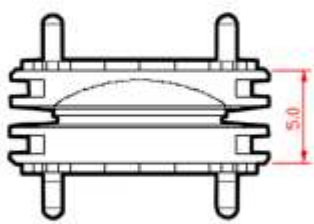
Anterior Cervical Disc Dual Keel 12mm x 14mm Superior Size 1	SS7170
Anterior Cervical Disc Dual Keel 12mm x 14mm Superior Size 2	SS7171
Anterior Cervical Disc Dual Keel 12mm x 14mm Superior Size 3	SS7172
Anterior Cervical Disc Dual Keel 12mm x 14mm Superior Size 4	SS7173
Anterior Cervical Disc Dual Keel 12mm x 14mm Inferior Size 1	SS7174
Anterior Cervical Disc Dual Keel 12mm x 14mm Inferior Size 2	SS7175
Anterior Cervical Disc Dual Keel 12mm x 14mm Inferior Size 3	SS7176
Anterior Cervical Disc Dual Keel 12mm x 14mm Inferior Size 4	SS7177
Anterior Cervical Disc Dual Keel 14mm x 14mm Superior Size 1	SS7178
Anterior Cervical Disc Dual Keel 14mm x 14mm Superior Size 2	SS7179
Anterior Cervical Disc Dual Keel 14mm x 14mm Superior Size 3	SS7180
Anterior Cervical Disc Dual Keel 14mm x 14mm Superior Size 4	SS7181
Anterior Cervical Disc Dual Keel 14mm x 14mm Inferior Size 1	SS7182
Anterior Cervical Disc Dual Keel 14mm x 14mm Inferior Size 2	SS7183
Anterior Cervical Disc Dual Keel 14mm x 14mm Inferior Size 3	SS7184
Anterior Cervical Disc Dual Keel 14mm x 14mm Inferior Size 4	SS7185

Size 1

Size 2

Size 3

Size 4



	Size 1	Size 2	Size 3	Size 4
L1	0.5mm	1.0mm	1.5mm	2.5mm
L2	4.5mm	5.0mm	5.5mm	6.5mm