

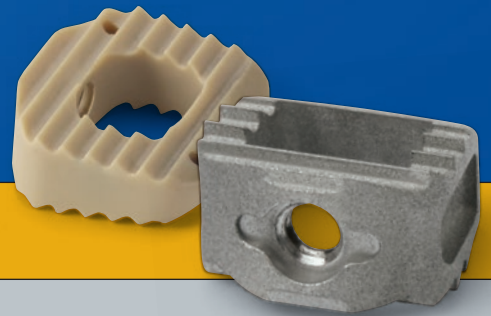
# uCerv<sup>®</sup>

## Anterior Cervical Interbody Device



**100** Years

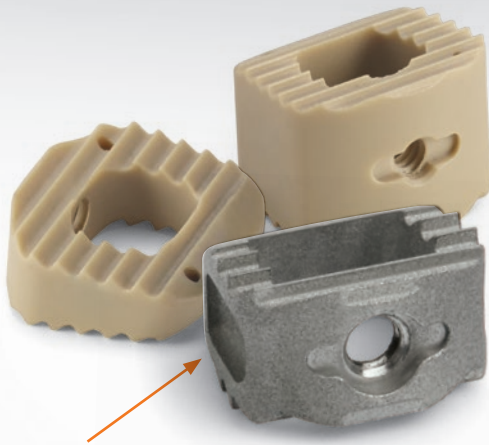
Over A Century Of Innovation



**Ulrich**  
medical USA

## System

- An implant system (PEEK or titanium) for the intervertebral body fusion of the cervical spine
- Rectangular shaped implants available in a parallel or lordotic configuration of various heights
- Lordosis of 0° and 6° in PEEK implants
- Lordosis of 0° (special order) and 6° in titanium implants



Recessed window to minimize scatter on x-ray

Width x Depth	Height
14 x 12mm	5 - 6mm (Titanium only)
14 x 12mm	7 - 12mm
15 x 13mm	5 - 11mm (12mm Titanium only)
17 x 14mm	6 - 11mm (12mm Titanium only)
19 x 16mm (PEEK only)	5 - 12mm

## Indications

The uCerv device is indicated for intervertebral body fusion in skeletally mature patients with degenerative disc disease (DDD) of the cervical spine at one (1) disc level from the C2-C3 disc to the C7-T1 disc. DDD is defined as discogenic pain with degeneration of the disc confirmed by history and radiographic studies. The device system is designed for use with supplemental fixation and with autograft to facilitate fusion. Patients should have at least six (6) weeks of non-operative treatment prior to treatment with an intervertebral cage.

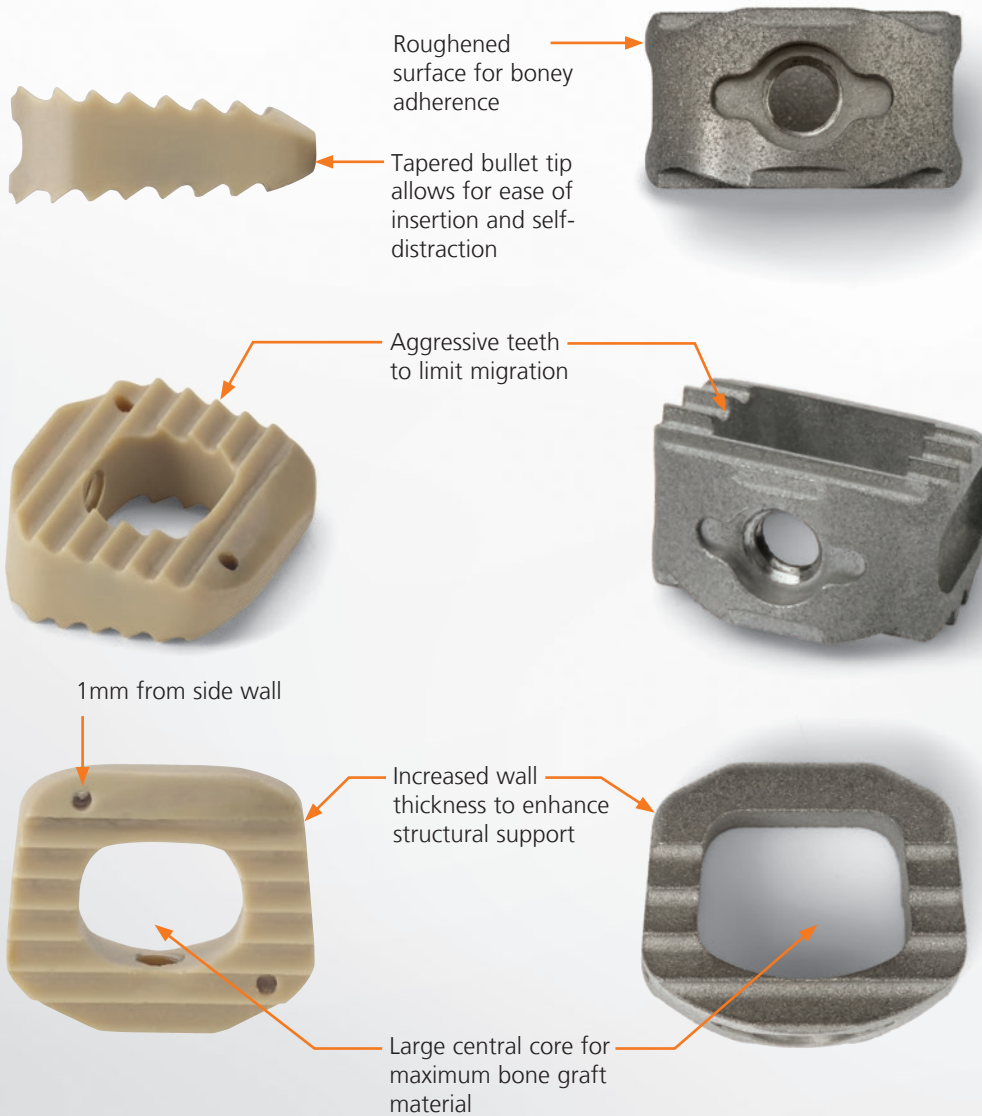


## Advantages

- Tapered bullet tip allows for ease of insertion and self-distraction
- Aggressive teeth to limit migration
- Increased wall thickness to enhance structural support
- Large central core for maximum bone graft material
- Titanium implants designed with roughened surface for improved boney adherence
- Implant is manufactured using Tantalum pins

Manufactured from  
radiolucent PEEK-OPTIMA® LT1

Manufactured from  
titanium



## Components

Implants	PEEK 0° Neutral Product No.	PEEK Lordotic 6° Product No.	Titanium 0° Neutral* Product No.	Titanium Lordotic 6° Product No.
<b>Small uCerv Height 5mm</b> (14mm X 12mm)			C4505	C4605
<b>Small uCerv Height 6mm</b> (14mm X 12mm)			C4506	C4606
<b>Small uCerv Height 7mm</b> (14mm X 12mm)	C4107	C4007	C4507	C4607
<b>Small uCerv Height 8mm</b> (14mm X 12mm)	C4108	C4008	C4508	C4608
<b>Small uCerv Height 9mm</b> (14mm X 12mm)	C4109	C4009	C4509	C4609
<b>Small uCerv Height 10mm</b> (14mm X 12mm)	C4110	C4010	C4510	C4610
<b>Small uCerv Height 11mm</b> (14mm X 12mm)	C4111	C4011	C4511	C4611
<b>Small uCerv Height 12mm</b> (14mm X 12mm)	C4112	C4012	C4512	C4612
<b>Medium uCerv Height 5mm</b> (15mm X 13mm)	C3105	C3005	C3505	C3605
<b>Medium uCerv Height 6mm</b> (15mm X 13mm)	C3106	C3006	C3506	C3606
<b>Medium uCerv Height 7mm</b> (15mm X 13mm)	C3107	C3007	C3507	C3607
<b>Medium uCerv Height 8mm</b> (15mm X 13mm)	C3108	C3008	C3508	C3608
<b>Medium uCerv Height 9mm</b> (15mm X 13mm)	C3109	C3009	C3509	C3609
<b>Medium uCerv Height 10mm</b> (15mm X 13mm)	C3110	C3010	C3510	C3610
<b>Medium uCerv Height 11mm</b> (15mm X 13mm)	C3111	C3011	C3511	C3611
<b>Medium uCerv Height 12mm</b> (15mm X 13mm)			C3512	C3612
<b>Large uCerv Height 5mm</b> (17mm X 14mm)			C5505	C5605
<b>Large uCerv Height 6mm</b> (17mm X 14mm)	C5106	C5006	C5506	C5606
<b>Large uCerv Height 7mm</b> (17mm X 14mm)	C5107	C5007	C5507	C5607
<b>Large uCerv Height 8mm</b> (17mm X 14mm)	C5108	C5008	C5508	C5608
<b>Large uCerv Height 9mm</b> (17mm X 14mm)	C5109	C5009	C5509	C5609
<b>Large uCerv Height 10mm</b> (17mm X 14mm)	C5110	C5010	C5510	C5610
<b>Large uCerv Height 11mm</b> (17mm X 14mm)	C5111	C5011	C5511	C5611
<b>Large uCerv Height 12mm</b> (17mm X 14mm)			C5512	C5612

\* 0° titanium implants are available by special order only.



Over A Century Of Innovation



18221 Edison Avenue, Chesterfield, MO 63005  
 Phone: 866.519.0268 | Fax: 636.519.0271  
[www.ulrichmedicalusa.com](http://www.ulrichmedicalusa.com)  
 IFU: [www.ifu.ulrichmedical.com](http://www.ifu.ulrichmedical.com)

uCerv is distributed by ulrich medical USA®, Inc.  
 PEEK-OPTIMA® is a registered trademark of Victrex PLC.