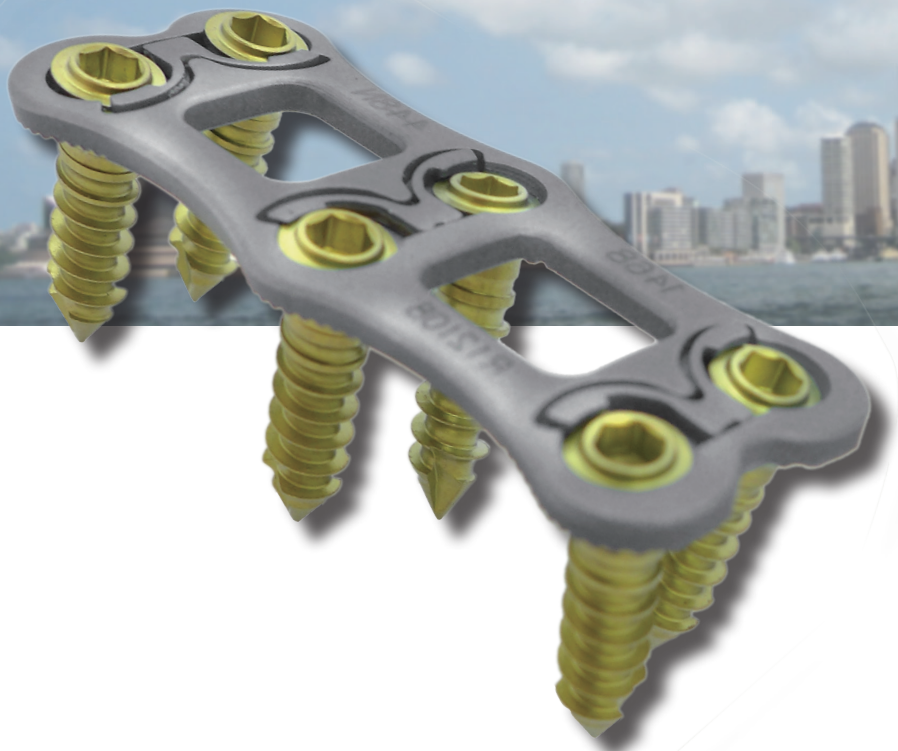
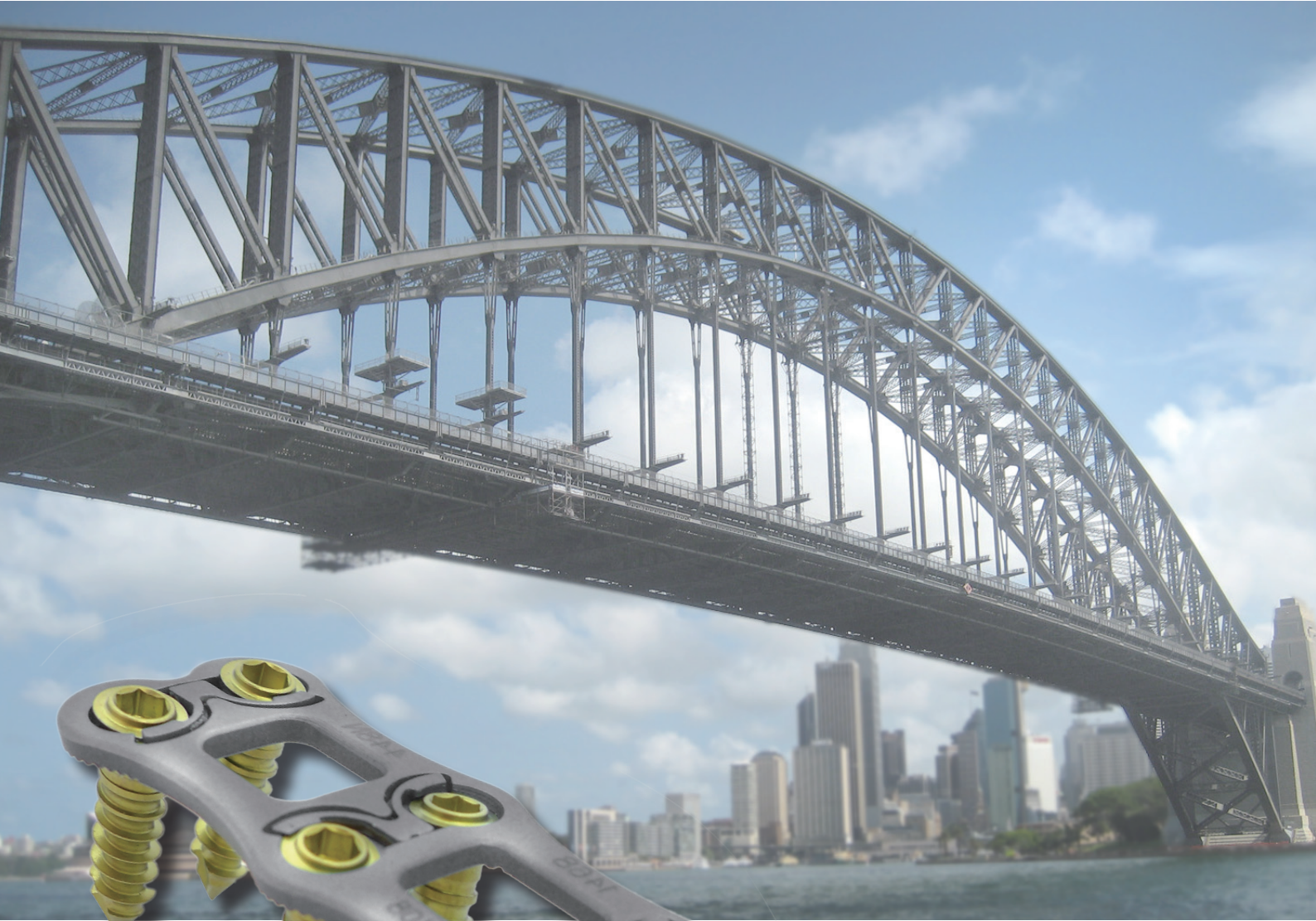


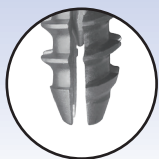
WinLoc[®] Anterior Cervical Plate System



Design Features



Conical Shap and Self Drilling



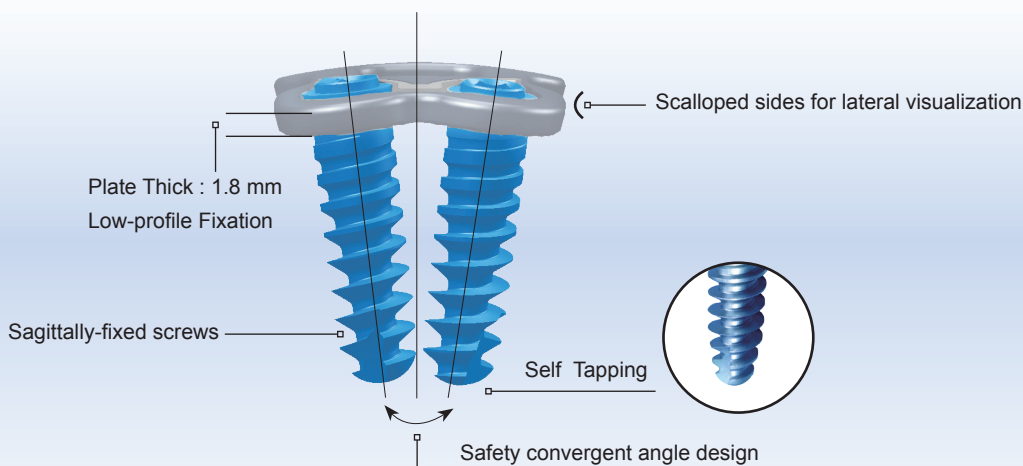
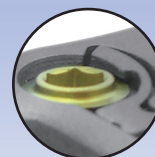
Expandable Screw

15° for variable screw

Large graft window for central visualization

Locking arm for secure screws inserted

Microstep Serrated for Interface contact



IMPLANTS

Cervical Plate

L	Level
1468-258N ▶	25
1468-278N ▶	27
1468-308N ▶	30
1468-338N ▶	33
1468-368N ▶	36



L	Level
1468-398N ▶	39
1468-428N ▶	42
1468-458N ▶	45
1468-488N ▶	48
1468-518N ▶	51
1468-548N ▶	54



L	Level
1468-588N ▶	58
1468-628N ▶	62
1468-668N ▶	66
1468-708N ▶	70
1468-748N ▶	74
1468-788N ▶	78
1468-828N ▶	82



L	Level
1468-868N ▶	86
1468-908N ▶	90



Cervical Screw

Variable Self Tapping Screw

L	ØA
1451-128N ▶	12 4.0
1451-148N ▶	14 4.0
1451-168N ▶	16 4.0
1451-188N ▶	18 4.0



Variable Oversized Screw

L	ØA
1452-128N ▶	12 4.5
1452-148N ▶	14 4.5
1452-168N ▶	16 4.5
1452-188N ▶	18 4.5



Expandable Screw

L	ØA
1456-128 ▶	12 4.0
1456-148 ▶	14 4.0
1456-168 ▶	16 4.0
1456-188 ▶	18 4.0



Variable Self Drilling Screw

L	ØA
1450-128N ▶	12 4.0
1450-148N ▶	14 4.0
1450-168N ▶	16 4.0
1450-188N ▶	18 4.0



C-SFS-001-BE 07/22

冠亞生技股份有限公司
A-SPINE ASIA CO., LTD.

11F, NO.1, Alley30, Lane 358, RuiGuang Road, NeiHu District, Taipei, 114 Taiwan
Tel: 886-2-2627-2977 Fax: 886-2-6606-5955
www.aspine.com.tw Email: service@aspine.com.tw