



Ulis



User - friendly
Streamlined instrumentation

ULIS™ FEATURES & BENEFITS

Optimized instrumentation :

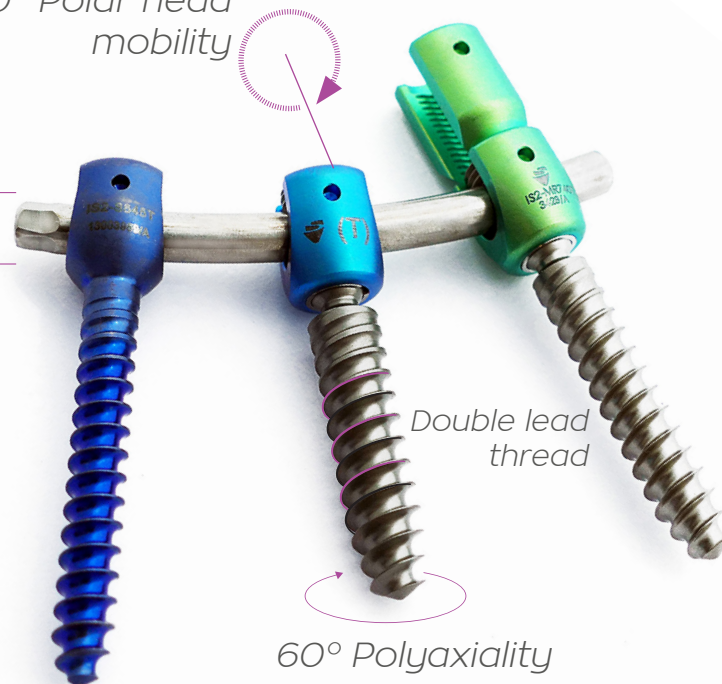
- Single tray for instruments
- One screwdriver for all screw types



Color coded diameter

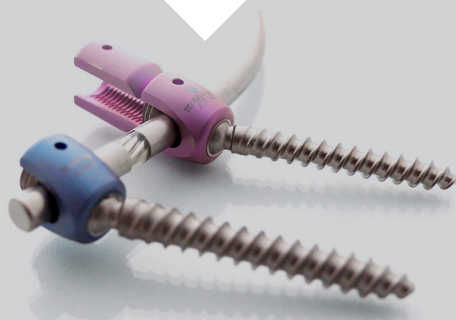
360° Polar head mobility

Hexagonal end



Double lead thread

60° Polyaxiality



Choose your type of construct :

- Rigid with ULIS Ø 6mm titanium rods
- Dynamic Flex+2 rods for motion preservation
- Hybrid Flex+2 rods to protect the adjacent level

Comprehensive range of low profile implants:

- Titanium straight or prebent rods from 40 to 100mm - 10mm increments
- Titanium straight rods : 120 / 140 & 250mm
- Cobalt Chromium straight rods from 40 to 90mm - 10mm increment + 250mm rod

References:

- Screws : IS2-MXXXT or IS2-SXXXT or IS2-MRXXXT
M = Multiaxial S = Monobloc MR = Reduction
XXXT = Diameter Length Titanium
- Rods : L2-R6XXCHT or L2-R6XXHT or U1-R6XXHC
CHT = Prebent Titanium HT = Straight Titanium
HC = Straight CrCo XX = Length

Length (mm)	25	30	35	40	45	50	55	60	65 to 90 5mm increments
4.5	✓	✓	✓	✓	✓	✓			
5.5	✓	✓	✓	✓	✓	✓	✓	✓	
6.5	✓	✓	✓	✓	✓	✓	✓	✓	
7.5		✓	✓	✓	✓	✓	✓	✓	
8.5		✓	✓	✓	✓	✓	✓	✓	✓
10.5		✓	✓	✓	✓	✓	✓	✓	✓

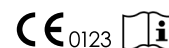
- Setscrew : MS1-L100T

Distributed by



SPINEVISION
10 Rue de la Renaissance
92160 ANTONY - FRANCE
Phone : +33 1 53 33 25 25

www.spinevision.net



See package insert
for labeling limitation

Non contractual document
GIS2-L_04GB