

NEST-C

INTERBODY SYSTEM

NEST-C Interbody System

NEST-C Interbody System is a cervical implant consisting both solid and porous structures designed for bone in-growth and biological fixation. Inspired by the microstructure of cancellous bone, and enabled by Paonan's 3D printing manufacturing process, this composite architecture provide a positive environment for cellular adhesion and proliferation.

A Titanium Dioxide Layer and Rough Surface

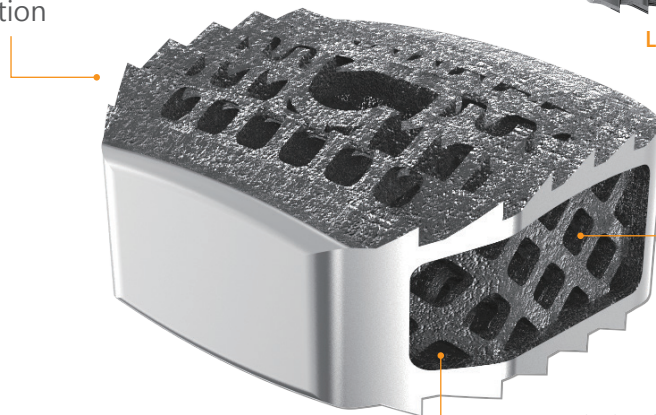
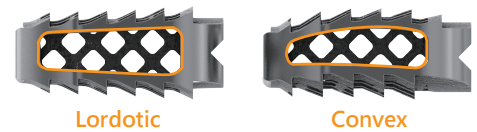
Promote cellular adhesion and proliferation

B Serrated Surface Design

Enhance fixation stability and avoid expulsion/migration

C Lordotic and Convex Design

Match anatomical structure of endplates for neutralized vertebral balance

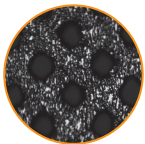


E Diamond Lattice / Solid Framework Composite Architecture

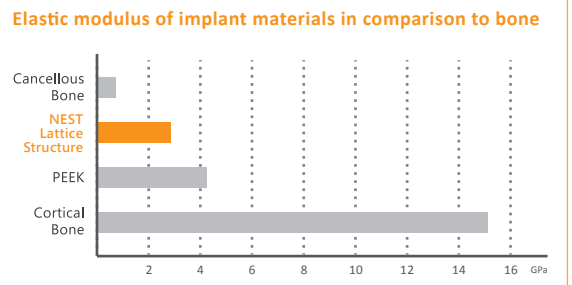
Optimized elastic modules to provide mechanical integrity and minimize subsidence

D Interconnected Porous Structure


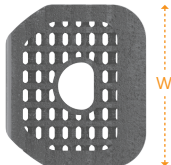
- Promote cellular adhesion and proliferation
- Excellent imaging properties under X-Ray and CT





Pore size range: 700-900µm
Porosity: ≈ 70-80%



Specification

Lordotic	REF	Width (W) (mm)	Length (L) (mm)	Height (H) (mm)
	21001114120501	14	12	5
	21001114120601	14	12	6
	21001114120701	14	12	7
	21001114120801	14	12	8
	21001114120901	14	12	9
	21001116140501	16	14	5
	21001116140601	16	14	6
	21001116140701	16	14	7
	21001116140801	16	14	8
	21001116140901	16	14	9

Convex	REF	Width (W) (mm)	Length (L) (mm)	Height (H) (mm)
	21001114120502	14	12	5
	21001114120602	14	12	6
	21001114120702	14	12	7
	21001114120802	14	12	8
	21001114120902	14	12	9
	21001116140502	16	14	5
	21001116140602	16	14	6
	21001116140702	16	14	7
	21001116140802	16	14	8
	21001116140902	16	14	9