

## HARMONIZED LOAD TRANSFER

Resulting in less stress shielding due to a better match of the material properties

## RELIABLE OSSEOINTEGRATION

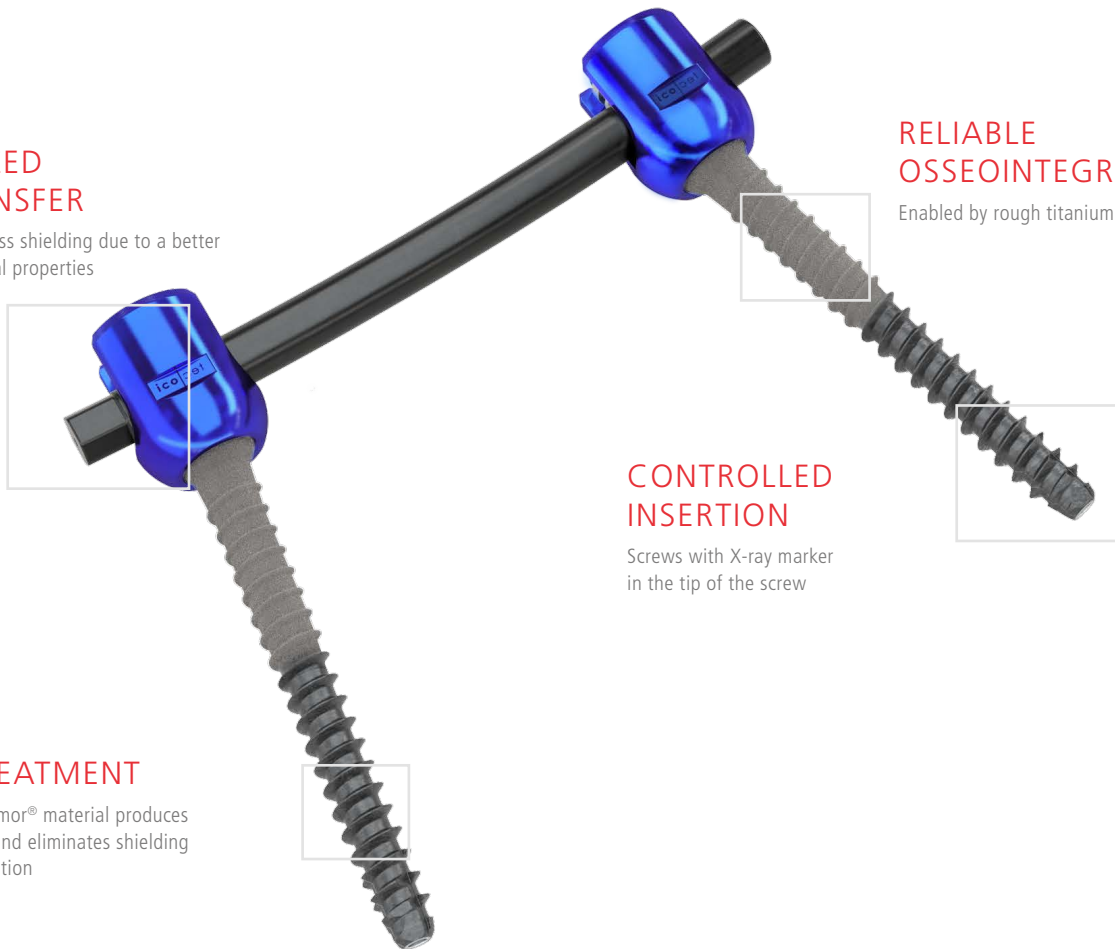
Enabled by rough titanium coating

## CONTROLLED INSERTION

Screws with X-ray marker  
in the tip of the screw

## TUMOR TREATMENT

Nonmetallic BlackArmor® material produces hardly any artifacts and eliminates shielding or scattering of radiation



inspired by nature – built by icotec

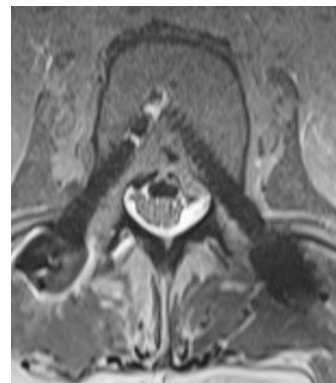
## LIGHTMORE® PEDICLE SYSTEM

Factsheet



X-ray

BlackArmor® Carbon/PEEK pedicle screws and titanium-coated icotec ETurn® TLIF Cage



MRI

BlackArmor® Carbon/PEEK pedicle screws



CT

Left: Titanium pedicle screw  
Right: BlackArmor® Carbon/PEEK pedicle screw

# LIGHTMORE® PEDICLE SYSTEM

## LightMore® Pedicle Screws

Description	Diameter	Length	Increments	Reference number
Screws, made of BlackArmor® Carbon/PEEK, polyaxial, noncannulated	5.5 mm	25–55 mm	5 mm	16-5724-555xx
	6.5 mm	30–60 mm	5 mm	16-5724-565xx
	7.5 mm	30–60 mm	5 mm	16-5724-575xx

## BlackArmor® Rods

Description	Curvature	Diameter	Radius	Length	Increments	Reference number
Rods, made of BlackArmor® Carbon/PEEK	Straight	5.5 mm	000	30–150 mm	10 mm	16-55-000xx
	Curved	5.5 mm	120	30–100 mm	10 mm	16-55-012xx
	Curved	5.5 mm	450	100–160 mm	20 mm	16-55-045xx
J-rods, made of BlackArmor® Carbon/PEEK: combination of straight (radius = 000 mm) and curved (radius = 450 mm)	Straight and curved	5.5 mm	000 and 450	60/70 mm*	–	16-55-00607-9
				50/100 mm	–	16-55-00510-9
				60/100 mm	–	16-55-00610-9

\* Available on request.

## Titanium Rods

Description	Curvature	Diameter	Radius	Length	Increments	Reference number
Rods, made of titanium, nonsterile	Straight	5.7 mm	000	40–100 mm	10 mm	16-57-400xx
				120–200 mm	20 mm	
				250–500 mm	50 mm	
Rods, made of titanium, sterile	Straight	5.7 mm	000	100–500 mm	100 mm	16-57-900xx
Rods, made of titanium, nonsterile	Curved	5.7 mm	120	40–100 mm	10 mm	16-57-412xx
				120–140 mm	20 mm	

## Titanium Nut Screw

Description	For rod diameter	Reference number
Nut Screw, made of titanium, sterile	5.5 mm	16-57-41000
	5.7 mm	

## Titanium Cross-Links

Description	Width	Reference number
Cross-Links, made of titanium, nonsterile	30–34 mm	16-57-3034
	33–42 mm	16-57-3442
	40–53 mm	16-57-4053
	50–70 mm	16-57-5070
Cross-Links, made of titanium, sterile	30–34 mm	16-57-93034
	33–42 mm	16-57-93442
	40–53 mm	16-57-94053
	50–70 mm	16-57-95070

Information needed to use the device is made available in electronic form; current and previous versions can be downloaded in electronic form at [ifu.icotec-medical.com](http://ifu.icotec-medical.com) (code = [REF](#)) or can be requested by email or phone from icotec. On request, icotec will provide a paper version within seven calendar days at no charge. The electronic versions can be viewed with a freely available PDF reader (e.g., Adobe Acrobat Reader, which can be downloaded at [www.adobe.com](http://www.adobe.com)).



[ifu.icotec-medical.com](http://ifu.icotec-medical.com)

ico | cœt

 icotec ag

Industriestrasse 12  
9450 Altstätten  
Switzerland  
Phone: +41 71 757 00 00  
Fax: +41 71 757 00 01  
info@icotec.ch  
[www.icotec-medical.com](http://www.icotec-medical.com)

CE 0297

Not available for sale within the United States.

0173EN 2019-09