

## TOOTH PROFILE

For the primary fixation stability of the VBR

## OSSEOCONDUCTIVE SURFACE

Rough Ti-iT<sup>®</sup> titanium coating, except on the posterior aspect to prevent dura irritation

## LORDOTIC CURVATURE OF THE BODY

Adaption to the patients anatomy

## TUMOR TREATMENT

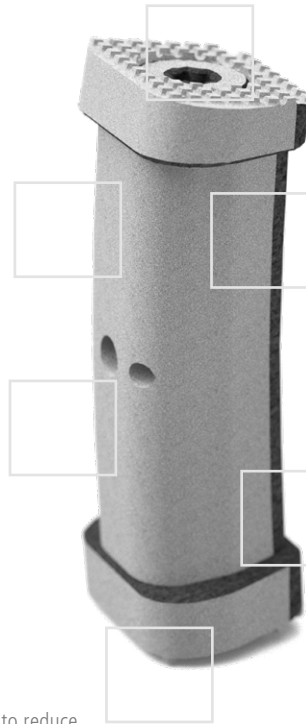
Nonmetallic BlackArmor<sup>®</sup> material produces minimal artifacts and eliminates shielding or scattering of radiation

## MODULAR IMPLANT

Various heights, widths, and angles

## LARGE FOOTPRINT

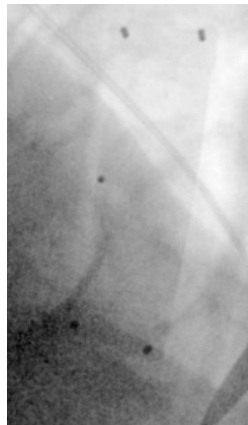
Large contact surface of the end plates to reduce the risk of migration and subsidence



inspired by nature – built by icotec

## KONG<sup>®</sup>-C VBR M

Factsheet



X-ray, lateral view

BlackArmor<sup>®</sup> Carbon/PEEK KONG<sup>®</sup>-C VBR M with tantalum markers



X-ray, AP view

BlackArmor<sup>®</sup> Carbon/PEEK KONG<sup>®</sup>-C VBR M with tantalum markers



Carbon/PEEK implant material from icotec

# KONG<sup>®</sup>-C VBR M

## KONG<sup>®</sup>-C VBR M Bodies

Description	Diameter	Total height incl. end plates	Increments	Reference number
Bodies, made of BlackArmor <sup>®</sup> Carbon/ PEEK	13 mm	16–66 mm	2 mm	12-80-13xx-0


## KONG<sup>®</sup>-C VBR M End Plates

Description	Size	Height	Angle*	Reference number
End Plates and Screws (one Screw per End Plate), made of BlackArmor <sup>®</sup> Carbon/PEEK	14 × 13 mm	5.5 mm	0°	12-80-001413
	16 × 13 mm	5.5 mm	0°	12-80-001613
	18 × 14 mm	5.5 mm	0°	12-80-001814
	14 × 13 mm	5.5 mm	3°	12-80-301413
	16 × 13 mm	5.5 mm	3°	12-80-301613
	18 × 14 mm	5.5 mm	3°	12-80-301814
	14 × 13 mm	5.5 mm	6°	12-80-601413
	16 × 13 mm	5.5 mm	6°	12-80-601613
	18 × 14 mm	5.5 mm	6°	12-80-601814

\* The angles of the end plates do not influence the implant height.

## KONG<sup>®</sup>-C VBR M Screw

Description	Size	Length	Reference number
Screw, made of BlackArmor <sup>®</sup> Carbon/ PEEK	M6	7 mm	12-80-00607

Information needed to use the device and a glossary of symbols that may appear on the product labeling and the meaning of the symbols are made available in electronic form; current and previous versions can be downloaded in electronic form at [ifu.icotec-medical.com](http://ifu.icotec-medical.com) (code = ) or can be requested by email or phone from icotec. On request, icotec will provide a paper version within seven calendar days at no charge. The electronic versions can be viewed with a freely available PDF reader (e.g., Adobe Acrobat Reader, which can be downloaded at [www.adobe.com](http://www.adobe.com)).



[ifu.icotec-medical.com](http://ifu.icotec-medical.com)

ico | c o t e c

 icotec ag

Industriestrasse 12  
9450 Altstätten  
Switzerland  
Phone: +41 71 757 00 00  
Fax: +41 71 757 00 01  
[info@icotec.ch](mailto:info@icotec.ch)  
[www.icotec-medical.com](http://www.icotec-medical.com)

CE 0297

Not available for sale within the United States.

0229EN\_2020-05