

# WHY TRANQUIL?

Tranquil is the only interbody to provide  
**rough titanium + ideal pore size + proper stiffness.**



*Tranquil*<sup>™</sup>  
LUMBAR & CERVICAL INTERBODY SYSTEM

NEXUS  
S P I N E

2825 Cottonwood Parkway, Suite 330  
Salt Lake City, Utah 84121  
Phone: 801.742.8342  
Fax: 801.702.8585  
info@nexusspine.com  
www.nexusspine.com



## MATERIAL MATTERS

Titanium is proven to be a superior material for spinal implants.

### VS Allograft

The Allograft harvesting process weakens the bone and results in breakage as studies have shown. Disease transmission is also a real risk with Allograft. Allograft is stiffer than spinal bone. Titanium is 10 times stronger, more osteoconductive and incorporates faster.

### VS Peek

Bone will not attach to PEEK and during implantation PEEK dust can settle in the disc space and make it harder for bone to grow there as well. Also, PEEK implants are stiffer than spinal bone. And PEEK is more prone to fracture.

### VS Coated Peek

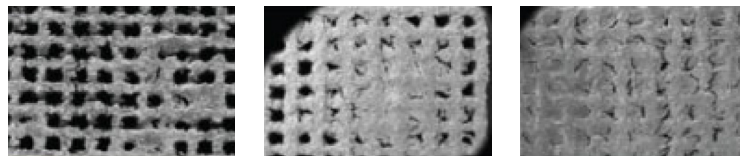
Stiffness is still high. Strength is still low.

## PORE SIZE MATTERS

These pictures illustrate how important pore size is when it comes to bone growth.

You will not that Tranquil's pore size clearly demonstrates advanced growth.

Tranquil with optimized pore size

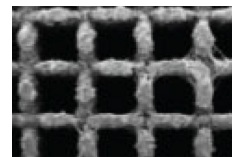


1 Week

3 Weeks

6 Weeks

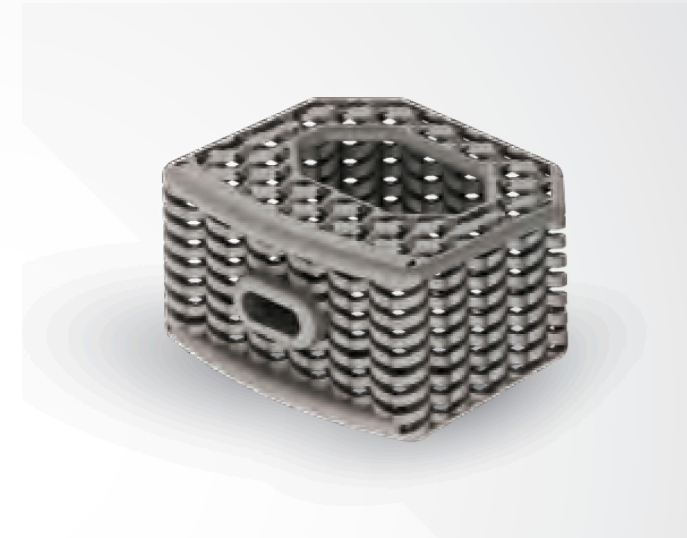
Nearest competitor



6 Weeks



**Tranquil-L™**  
LUMBAR INTERBODY SYSTEM

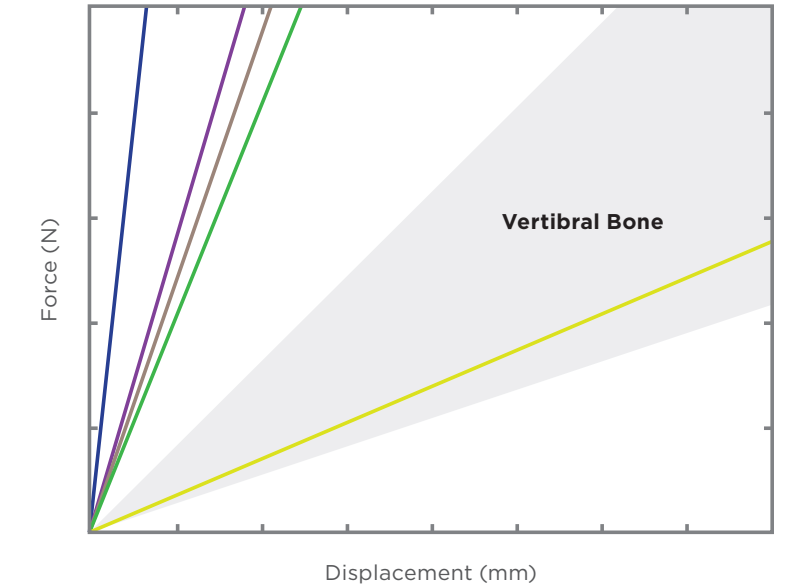


**Tranquil-C™**  
CERVICAL INTERBODY SYSTEM

## STIFFNESS MATTERS

We need a line here summarizing what the chart shows.

- Titan
- Femoral Bone
- PEEK
- Zimmer
- Tranquil™



## RADIOLUCENCY MATTERS

Tranquil is radiolucent with effectively the same radiolucency as a vertebral body. This allows viewing of the fusion mass.

*Can we find some sort of visual to accompany this statement?*