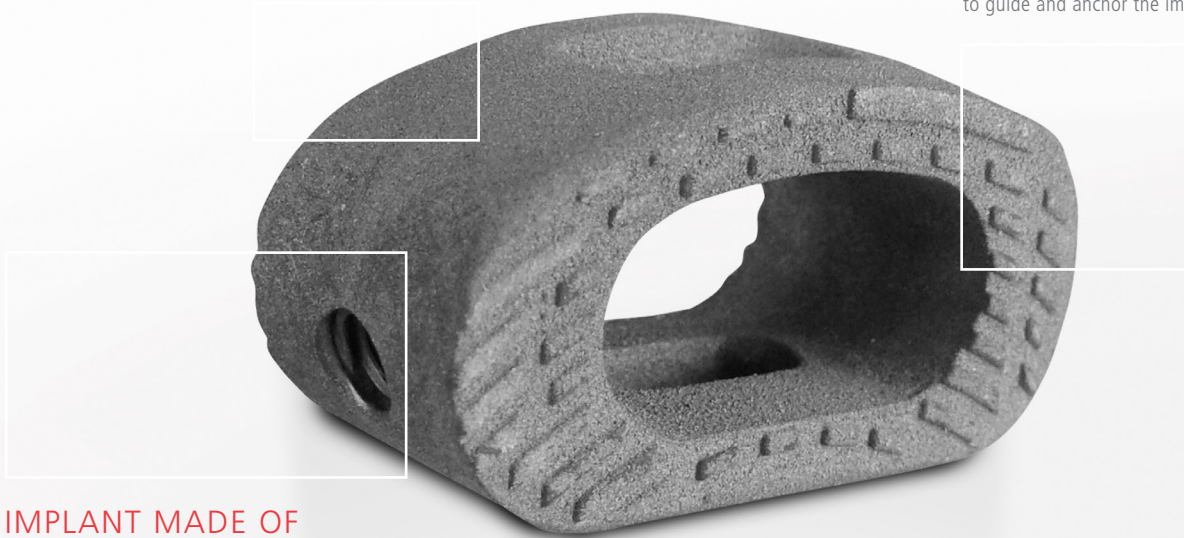


RELIABLE OSSEOINTEGRATION

Rough titanium coating

SELF-DISTRACTION

The wedge and surface treads serve to guide and anchor the implant



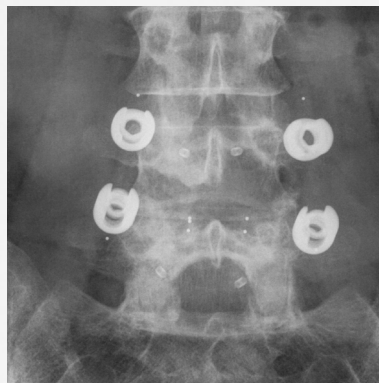
IMPLANT MADE OF BLACKARMOR®

Reduced artifacts in postoperative imaging procedures

inspired by nature – built by icotec

ICOTEC ETURN® TLIF CAGE

Factsheet



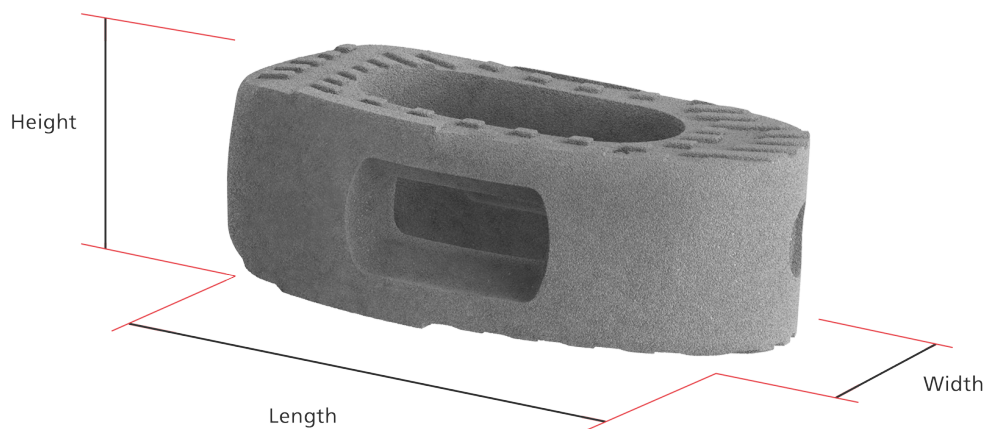
EXCELLENT IMAGING QUALITY

focused on bone – not metal

ICOTEC ETURN® TLIF CAGE

icotec ETurn® TLIF Cages

Description	Length	Width	Height	Reference number
icotec ETurn® TLIF Cage	32 mm	12 mm	7 mm	12-57-12-32-07-ITi
			8 mm	12-57-12-32-08-ITi
			9 mm	12-57-12-32-09-ITi
			10 mm	12-57-12-32-10-ITi
			11 mm	12-57-12-32-11-ITi
			12 mm	12-57-12-32-12-ITi
			13 mm	12-57-12-32-13-ITi
			14 mm	12-57-12-32-14-ITi
icotec ETurn® TLIF Cage	32 mm	16 mm	15 mm	12-57-12-32-15 ITi
			7 mm	12-58-16-32-07-ITi
			8 mm	12-58-16-32-08-ITi
			9 mm	12-58-16-32-09-ITi
			10 mm	12-58-16-32-10-ITi
			11 mm	12-58-16-32-11-ITi
			12 mm	12-58-16-32-12-ITi
13 mm	12-58-16-32-13-ITi			
14 mm	12-58-16-32-14-ITi			
15 mm	12-58-16-32-15-ITi			



Information needed to use the device is made available in electronic form; current and previous versions can be downloaded in electronic form at ifu.icotec-medical.com (code = REF) or can be requested by email or phone from icotec. On request, icotec will provide a paper version within seven calendar days at no charge. The electronic versions can be viewed with a freely available PDF reader (e.g., Adobe Acrobat Reader, which can be downloaded at www.adobe.com).



ifu.icotec-medical.com

ico | cœt

 icotec ag

Industriestrasse 12
9450 Altstätten
Switzerland
Phone: +41 71 757 00 00
Fax: +41 71 757 00 01
info@icotec.ch
www.icotec-medical.com

CE 0297

Not available for sale within the United States.

0128EN 2019-01