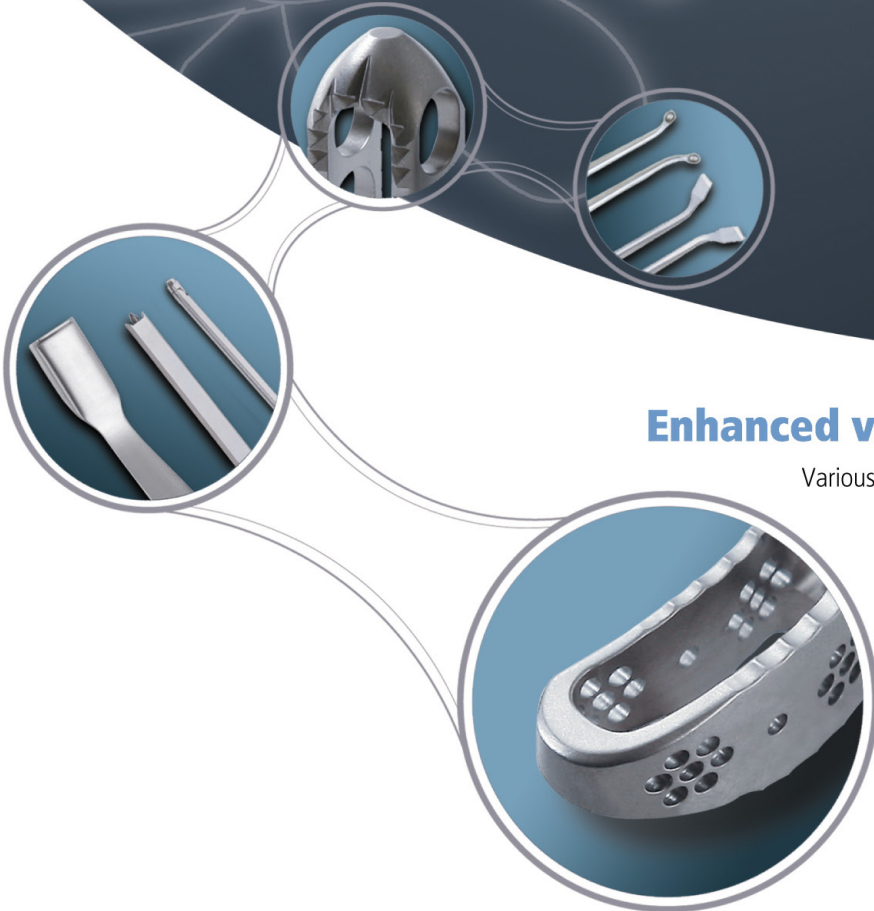


4CIS[®]



Modular & One-Touch Cage System



Enhanced versatility & various combination

Various combination and approaches by Circular, Bullet, and Curved Cage. Posterior(PLIF), Tranforaminal(TLIF), Lateral, Anterior, and Laparoscopic Approaches are available.

SOLCO.
LIFE & SCIENCE

Modular Cage

Compact

Convenient

Confident

Comprehensive

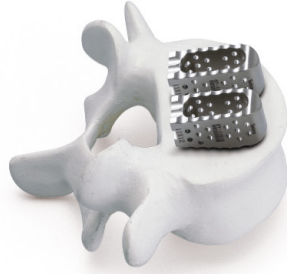




Transforaminal



Posterior



Lateral



Anterior



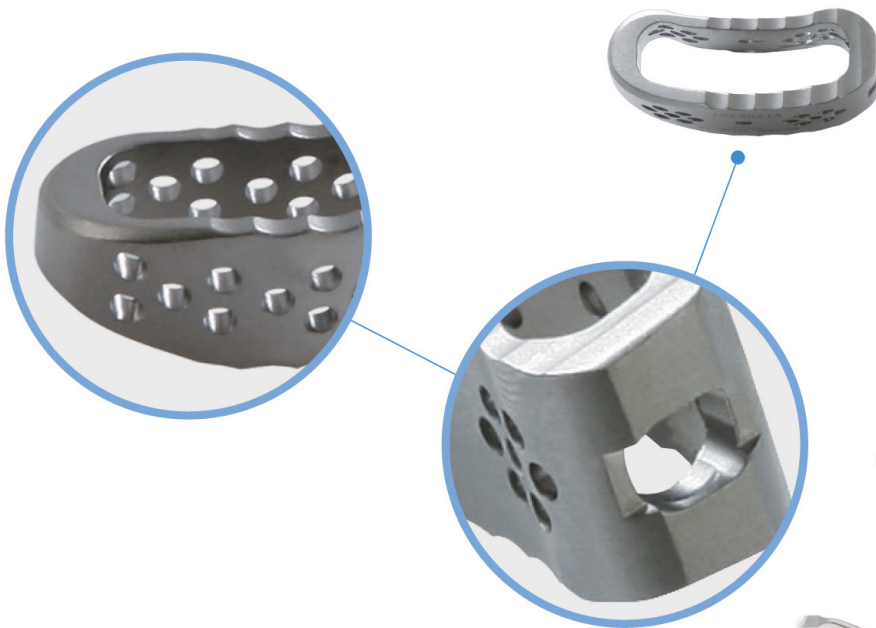
Wide Fusion Surface

which guarantees high union rate.



Enhanced Anchorage & Prevention of Collapse in Vertebral Body

Providing maximum contact surface between the edge teeth of cage and bony endplate, it prevents the cage from eating into a vertebral body.



Anatomical Shape

Well fitting into the endplate of vertebral body



One-Touch Cage

Compact

Convenient

Confident

Comprehensive



One-touch coupling between the cage and the holder



Product Features

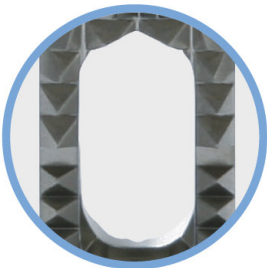
Design to prevent cage slippage



Easy to connect



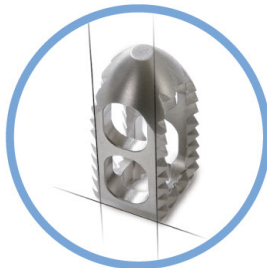
Wide space for bone grafting



Easy insertion



A lordotic Configuration

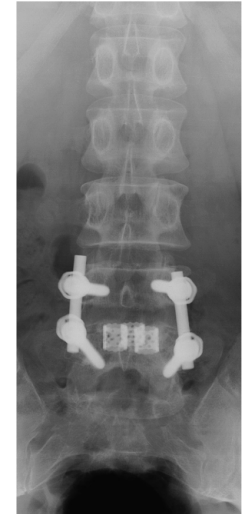
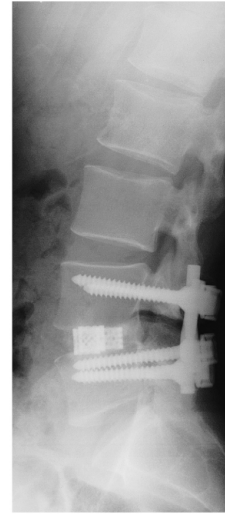


Simple but perfect connection by one touch



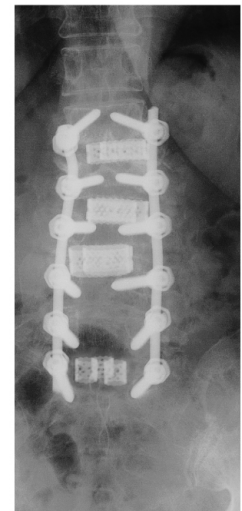
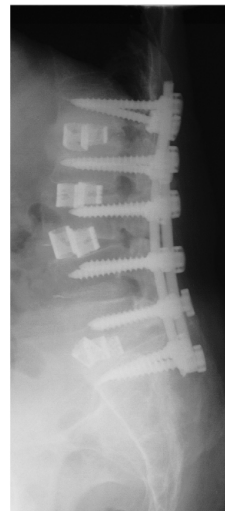
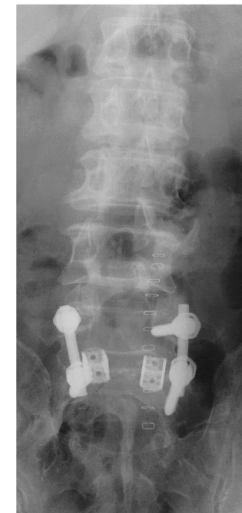
Implants List

Cat. No	Description	Size	
67-12080	Modular Intervertebral Cage, Circle	φ 12	8mm
67-12100	Modular Intervertebral Cage, Circle		10mm
67-12120	Modular Intervertebral Cage, Circle		12mm
67-12140	Modular Intervertebral Cage, Circle		14mm
67-13080	Modular Intervertebral Cage, Circle	φ 13	8mm
67-13100	Modular Intervertebral Cage, Circle		10mm
67-13120	Modular Intervertebral Cage, Circle		12mm
67-13140	Modular Intervertebral Cage, Circle		14mm
67-11208	Modular Intervertebral Cage, Bullet	11	20 × 8mm
67-11210	Modular Intervertebral Cage, Bullet		20 × 10mm
67-11212	Modular Intervertebral Cage, Bullet		20 × 12mm
67-11214	Modular Intervertebral Cage, Bullet		20 × 14mm
67-11508	Modular Intervertebral Cage, Bullet	11	25 × 8mm
67-11510	Modular Intervertebral Cage, Bullet		25 × 10mm
67-11512	Modular Intervertebral Cage, Bullet		25 × 12mm
67-11514	Modular Intervertebral Cage, Bullet		25 × 14mm
67-25082	Modular Intervertebral Cage, Curved	25	25 × 8mm
67-25102	Modular Intervertebral Cage, Curved		25 × 10mm
67-25122	Modular Intervertebral Cage, Curved		25 × 12mm
67-25142	Modular Intervertebral Cage, Curved		25 × 14mm
67-30081	Modular Intervertebral Cage, Curved	30	30 × 8mm
67-30101	Modular Intervertebral Cage, Curved		30 × 10mm
67-30121	Modular Intervertebral Cage, Curved		30 × 12mm
67-30141	Modular Intervertebral Cage, Curved		30 × 14mm



Instruments List

Cat. No	Description	Surgical Procedure
29-17014	Durameter Retractor	Approach & Discectomy
5901-0048	Bone Curette, Straight	
5901-0033	Bone Curette, Angled, Right	
5901-0032	Bone Curette, Angled, Left	
5901-0030	Osteotome, Angled, Right	
5901-0029	Osteotome, Angled, Left	
5901-0035	Reamer Sharp 7mm	Preparation of the insertion site
5901-0036	Reamer Sharp 9mm	
5901-0037	Reamer Sharp 11mm	
5901-0038	Reamer Sharp 13mm	
5901-0039	Reamer Sharp 15mm	
5901-0040	Reamer Blunt 7mm	
5901-0041	Reamer Blunt 9mm	
5901-0042	Reamer Blunt 11mm	
5901-0043	Reamer Blunt 13mm	Preparation & Placement of the cage
5901-0044	Reamer Blunt 15mm	
5901-0045	T-Handle	
29-11020	Distractor	
29-17002	Cage Holder, small type	
5901-0025	Cage Impactor, Universal	
5901-0049	Box Chisel, 10 × 8mm	
5901-0031	Box Chisel, 10 × 6mm	
5901-0046	Graft Holder	
5901-0047	Graft Impactor	
29-11026	Spreader, 13mm	
29-11027	Spreader, 18mm	
29-11028	Spreader, 23mm	
29-10034	Nut Guide Cutting Forceps	
5901-0027	Cancellous Bone Funnel	
5901-0028	Cancellous Bone Impactor	
9901-5018	Modular Cage Implant case, circle	Preparation & Placement of the cage
9901-5019	Modular Cage Implant case, bullet	
9901-5020	Modular Cage Implant case, curved	
9901-5021	Modular Cage 1st Instruments Tray	
9901-5022	Modular Cage 2nd Instruments Tray	
9901-5017	Modular Cage Container	
9901-5016	Modular Cage Graphic Container	



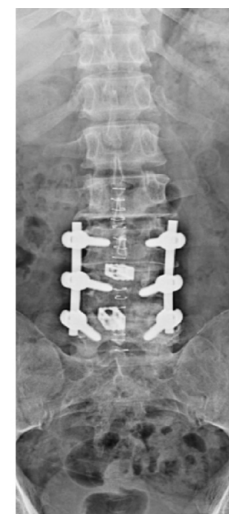
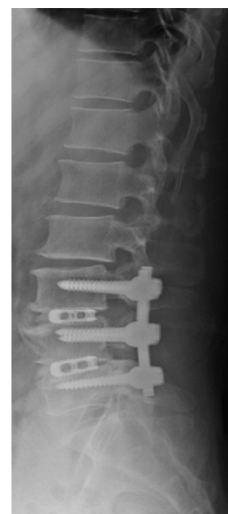
Implants List

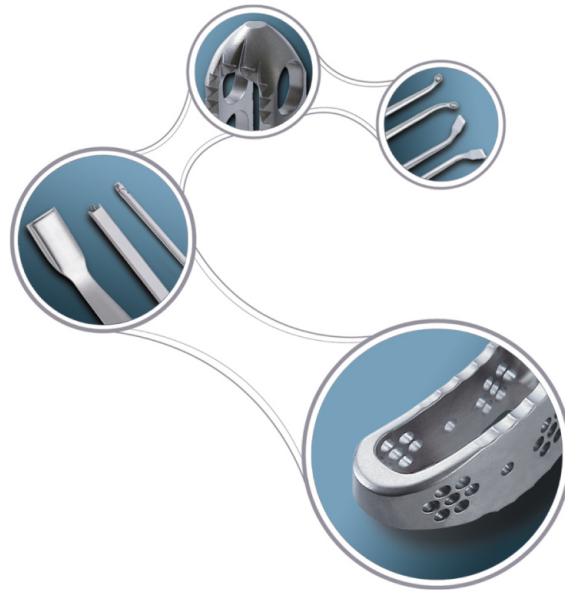
Cat. No	Description	Size	
67-00825	One-Touch Cage	0°	25 × 11 × 8mm
67-00925	One-Touch Cage		25 × 11 × 9mm
67-01025	One-Touch Cage		25 × 11 × 10mm
67-01125	One-Touch Cage		25 × 11 × 11mm
67-01225	One-Touch Cage		25 × 11 × 12mm
67-01325	One-Touch Cage		25 × 11 × 13mm
67-01425	One-Touch Cage		25 × 11 × 14mm
67-01525	One-Touch Cage	25 × 11 × 15mm	
67-40825	One-Touch Cage	3°	25 × 11 × 8mm
67-40925	One-Touch Cage		25 × 11 × 9mm
67-41025	One-Touch Cage		25 × 11 × 10mm
67-41125	One-Touch Cage		25 × 11 × 11mm
67-41225	One-Touch Cage		25 × 11 × 12mm
67-41325	One-Touch Cage		25 × 11 × 13mm
67-41425	One-Touch Cage		25 × 11 × 14mm
67-41525	One-Touch Cage	25 × 11 × 15mm	
67-41625	One-Touch Cage	25 × 11 × 16mm	
67-61025	One-Touch Cage	6°	25 × 11 × 10mm
67-61125	One-Touch Cage		25 × 11 × 11mm
67-61225	One-Touch Cage		25 × 11 × 12mm
67-61325	One-Touch Cage		25 × 11 × 13mm
67-61425	One-Touch Cage		25 × 11 × 14mm
67-61525	One-Touch Cage		25 × 11 × 15mm
67-61625	One-Touch Cage		25 × 11 × 16mm



Instruments List

Cat. No	Description	Surgical Procedure
29-17014	Durameter Retractor	Approach & Discectomy
29-17016	Triangular Curette	
29-17116	Triangular Curette	
5901-0035	Reamer Sharp 7mm	Preparation of the insertion site
5901-1038	Reamer Sharp 8mm	
5901-0036	Reamer Sharp 9mm	
5901-1039	Reamer Sharp 10mm	
5901-0037	Reamer Sharp 11mm	
5901-1040	Reamer Sharp 12mm	
5901-0038	Reamer Sharp 13mm	
5901-1041	Reamer Sharp 14mm	
5901-0039	Reamer Sharp 15mm	
5901-0040	Reamer Blunt 7mm	
5901-1046	Reamer Blunt 8mm	
5901-0041	Reamer Blunt 9mm	
5901-1047	Reamer Blunt 10mm	
5901-0042	Reamer Blunt 11mm	
5901-1048	Reamer Blunt 12mm	
5901-0043	Reamer Blunt 13mm	
5901-1049	Reamer Blunt 14mm	
5901-0044	Reamer Blunt 15mm	
5901-0045	T-Handle	Preparation & Placement of the cage
29-17002	Cage Holder, small type	
29-17001	Cage Holder, large type	
5901-0049	Box Chisel, 8mm	
5901-0031	Box Chisel, 6mm	
29-17019	Trial, 8mm	
29-17119	Trial, 6mm	
5901-0046	Graft Holder	
5901-0047	Graft Impactor	
5901-0027	Cancellous Bone Funnel	
5901-0028	Cancellous Bone Impactor	
70-17004	One Touch Cage Implant case	
9901-5014	One Touch Cage 1st Instruments Tray	
9901-5015	One Touch Cage 2nd Instruments Tray	
9901-5013	One Touch Cage Container	
9901-5012	One Touch Cage Graphic Container	





Modular & One-Touch Cage System

SOLCO.
LIFE & SCIENCE

HEAD OFFICE

#34-6, Keumam-ri, Seotan-myeon, Pyeongtaek, Gyeonggi-do 451-852 Korea

Tel. +82-31-664-4101 Fax. +82-31-663-6520

SEOUL OFFICE

13F, #505-14, Gasan-dong, Geumcheon-gu, Seoul 158-803 Korea

Tel. +82-2-2082-7700 Fax. +82-2-2082-7701

www.solco.co.kr