



**GLOBUS**  
MEDICAL



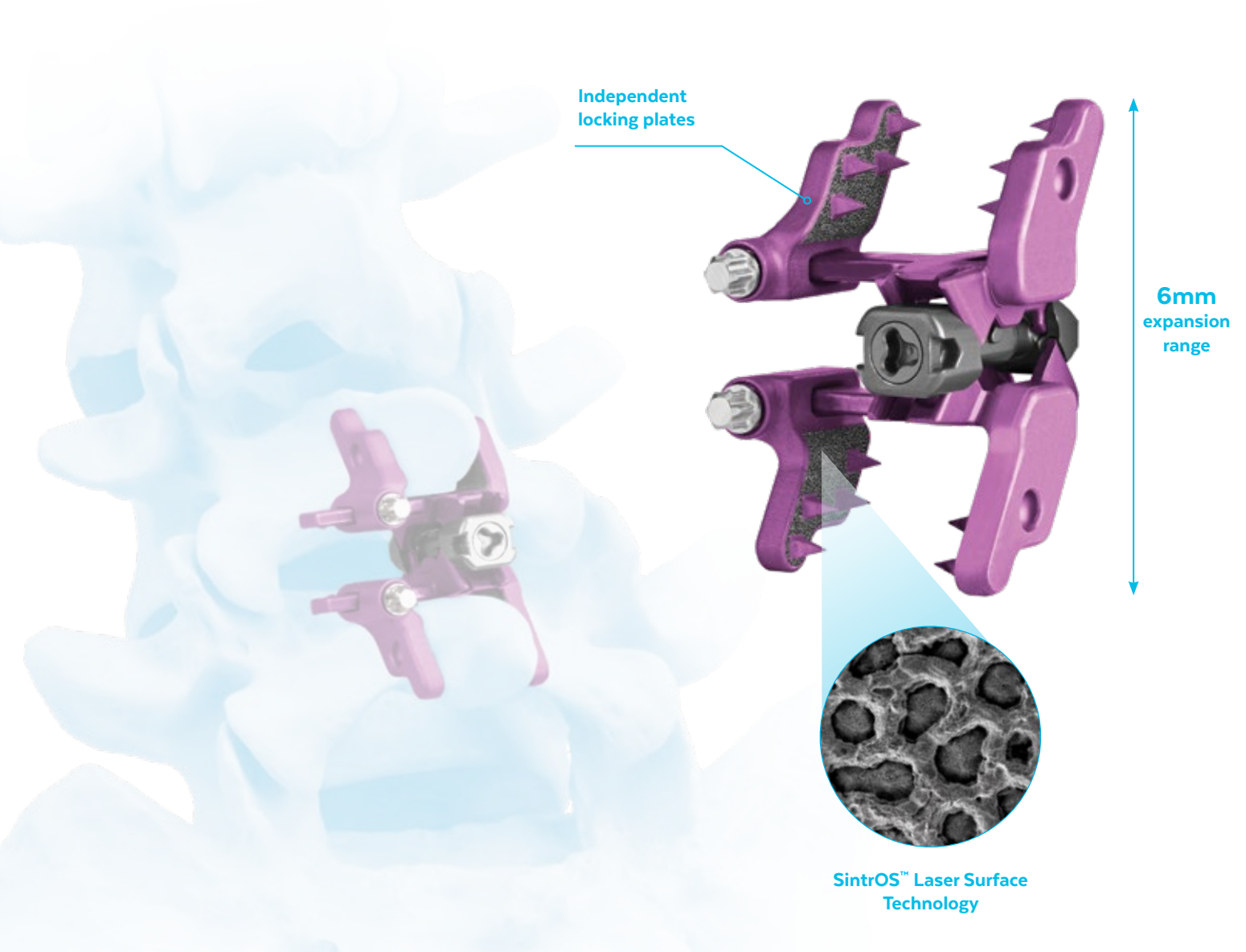
# AERIAL™

Expandable Interspinous Fixation System

# AERIAL™

## EXPANDABLE INTERSPINOUS FIXATION SYSTEM

AERIAL™ is an expandable interspinous fixation system designed to provide indirect decompression and spinous process fixation while optimizing anatomic fit.



**3** EXPANSION RANGES  
7-13mm, 8-14mm,  
and 9-15mm

**2** IMPLANT WIDTHS  
8 and 10mm

**3** SAGITTAL PROFILES  
4°, 10°, and 15°

# OPTIMAL FIT SIMPLIFIED FIXATION

## Engineered for Fit

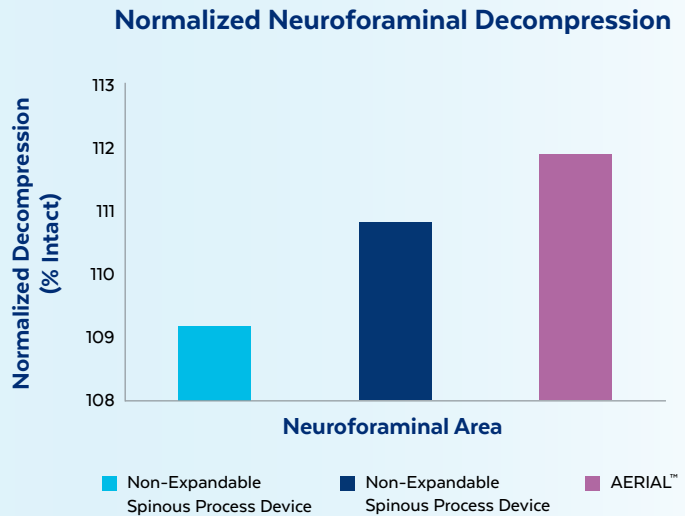
**Expandable core** allows for 6mm of continuous distraction to help restore neuroforaminal area.

**Integrated lordosis** to help maintain sagittal alignment.

**Independent locking plates** separately engage each spinous process to fit patient anatomy.



*In a cadaveric radiographic study, AERIAL™ demonstrated the largest percent increase in neuroforaminal area without any compromise in segmental lordosis compared to a non-expandable spinous process device.\**



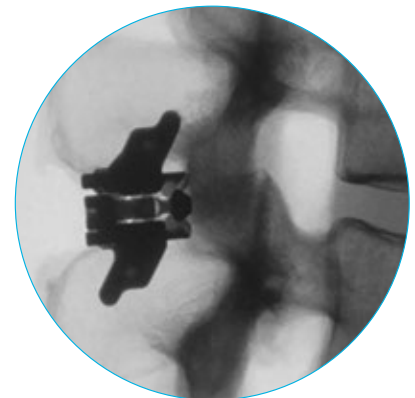
## Designed to Simplify the Procedure

**Minimized starting height** eases implant placement and reduces steps by eliminating the need for trialing.

**Streamlined delivery** with one instrument for both insertion and expansion.

**A single tray** for all implants and instruments.

**3 simple steps after insertion** → **EXPAND, COMPRESS, LOCK**






Globus Medical  
Valley Forge Business Center  
2560 General Armistead Avenue  
Audubon, PA 19403  
[www.globusmedical.com](http://www.globusmedical.com)

Customer Service:  
Phone 1-866-GLOBUS1 (or 1-866-456-2871)  
Fax 1-866-GLOBUS3 (or 1-866-456-2873)

©2018 Globus Medical. All rights reserved. Patent [www.globusmedical.com/patents](http://www.globusmedical.com/patents). Life moves us is a registered trademark of Globus Medical. Please refer to package insert for description, indications, contraindications, warnings, precautions and other important information.

 RMS - UK Limited  
28 Trinity Road, Nailsea, Somerset, BS48 4NU England

 0297

GMBRC244  
12.18 Rev A