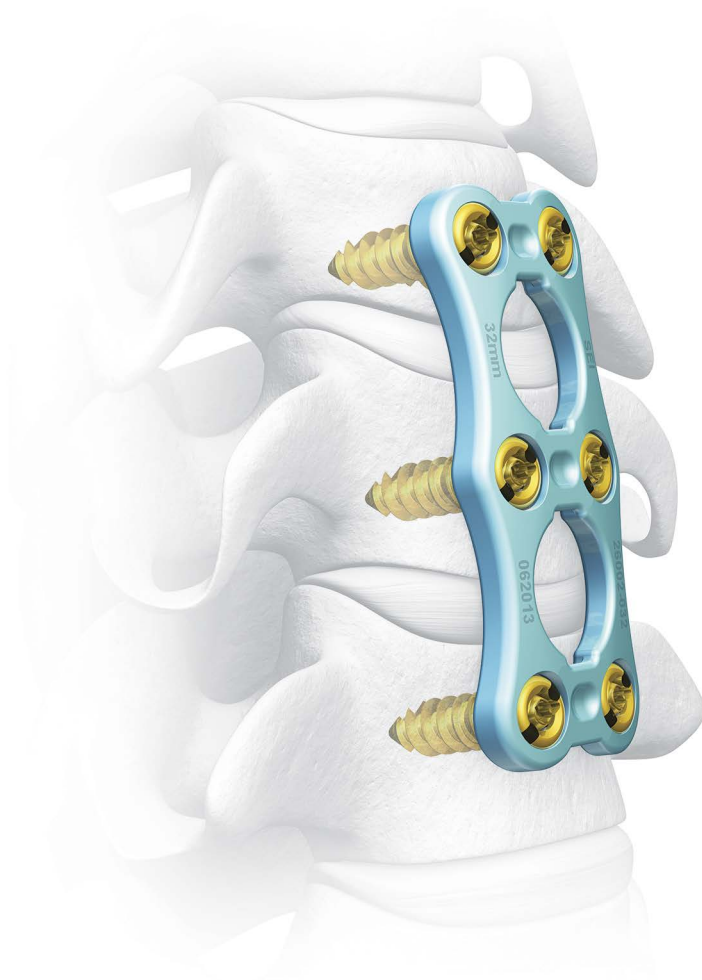


Sapphire[®]

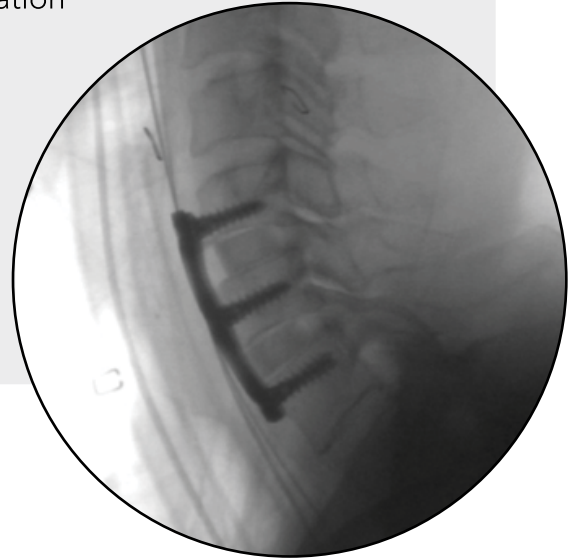
Anterior Cervical Plate System



Confidence
with every turn.

Sapphire® | Anterior Cervical Plate System

- Low profile, sleek, and narrow plating system for optimal anatomical fit
- Large plate windows allow exceptional graft visualization
- Provides constrained, semi-constrained, or hybrid screw configurations
- Integrated locking system for confident results
- Variety of preparation and screw placement options
- Reliable and intuitive instruments for simplified implantation



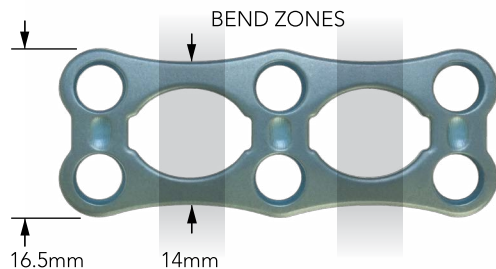
Thin Plate Profile

Sapphire is one of the lowest profile plating systems on the market. The Sapphire plate is 2mm thin, minimizing protrusion.



Contoured Design

The Sapphire plate is prelordosed and narrow to fit with most anatomical curvatures. It offers surgeons the flexibility to further contour the plate at the "bend zones" for unique patient anatomy.

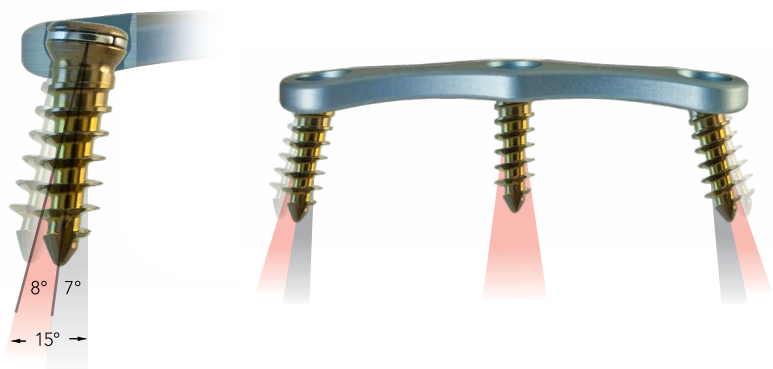


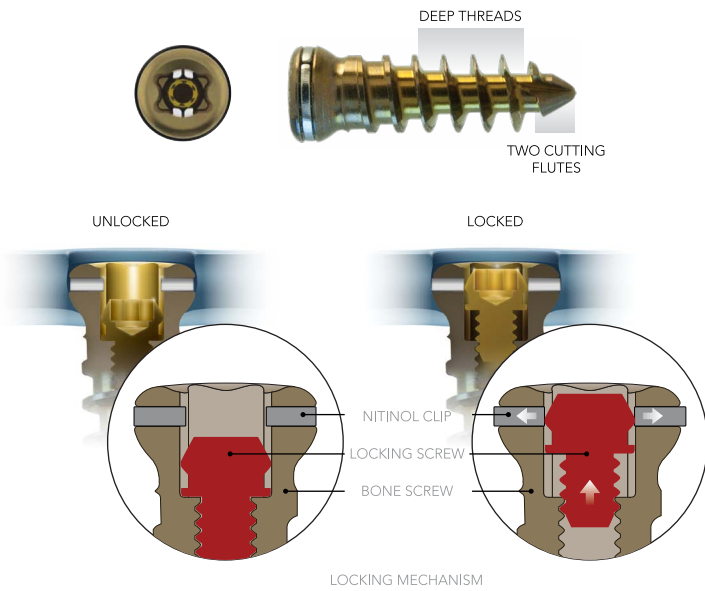
Large Windows

Sapphire's windows allow for exceptional visualization of the interbody space.

Plate System Angulation

- 7° Built into the plate
- 8° Additional screw angulation [+/-]
- 15° Maximum angulation from center of plate curvature





Proven Screw Design

Sapphire's screw design allows for excellent screw retention, robust thread engagement, and easy insertion.

Integrated Locking System

Sapphire's locking mechanism is built into the head of the bone screw. It is intended to help resist screw backout, maintain the low profile of the plate, and simplify the surgical technique.

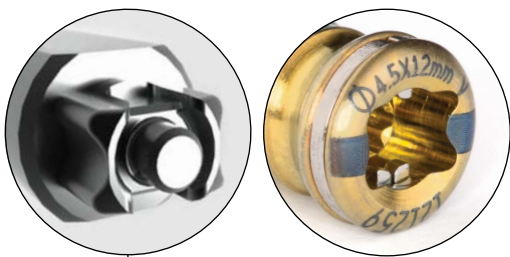
Audible and Tactile Locking Confirmation

Once the locking mechanism has been deployed an audible click can be heard and felt, delivering confidence.

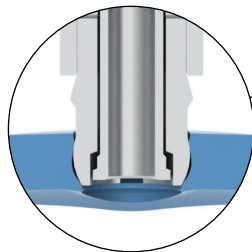
Intuitive Instrumentation

The Sapphire system can simplify procedures with its functionally elegant instrumentation.

- The Screwdriver design provides a secure interface with the screws.
- The Drill Guides lock into plates for a positive fit.
- The Double Barrel awl-drill-tap-screw (ADTS) guide reduces the number of steps needed to secure the plate onto the vertebral bodies.



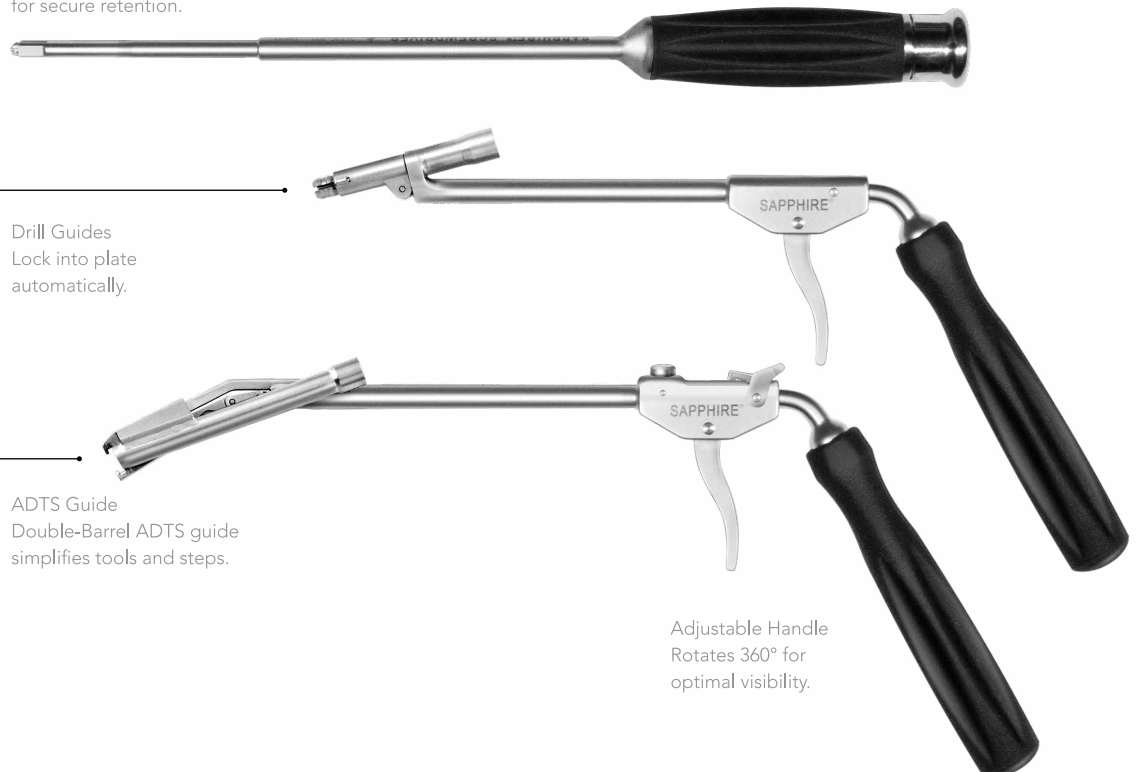
Screwdriver
Unique four-lobe design
for secure retention.



Drill Guides
Lock into plate
automatically.



ADTS Guide
Double-Barrel ADTS guide
simplifies tools and steps.



Adjustable Handle
Rotates 360° for
optimal visibility.

Sapphire[®]

Anterior Cervical Plate System

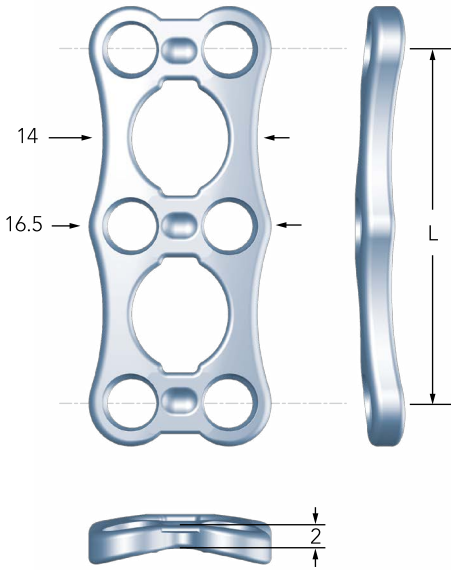


	Plate Length	Length Increments
1-Level	11-25	2
2-Level	26-44	3
3-Level	42-68	3
4-Level	60-84	4

Dimensions expressed in millimeters.

BONE SCREW		
OPTIONS:	Diameter	Length
Fixed, Variable Angle, Self-Tapping, Self-Drilling*	4.0	10-18 [‡]
	4.5	10-18 [‡]

*Self-Drilling available in 4.0 only and 10-16mm.
 Dimensions expressed in millimeters
[‡]2mm increments.

