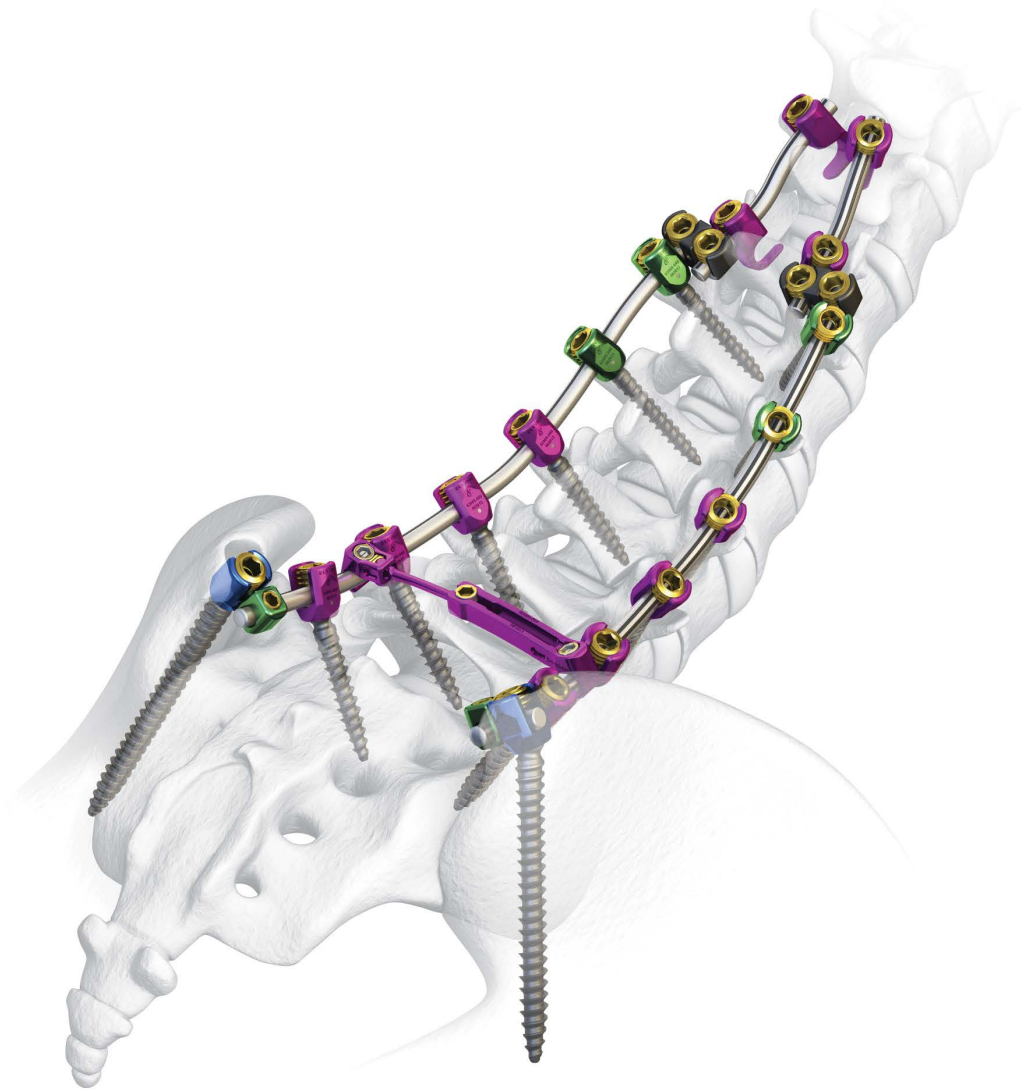


# Mercury<sup>®</sup> Total Spine

## Iliac Fixation



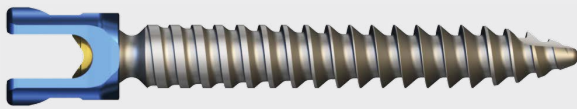
Foundation of Fixation.

# Mercury<sup>®</sup> Total Spine

## Iliac Fixation

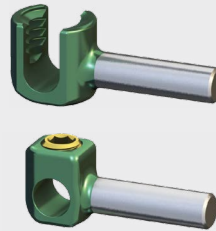
### Open Polyaxial Iliac Screws

Diameter**	Length*
6.5-10.5	60-120



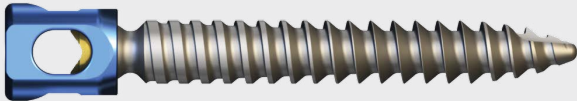
### Offset Connectors

Type	Length*
Open	20-40
Closed	20-40



### Closed Polyaxial Iliac Screws

Diameter**	Length*
6.5-10.5	60-120



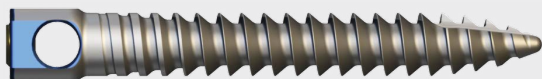
### Rod-To-Rod Connectors

Type
Axial
Parallel Closed
Parallel Open



### Closed Fixed Iliac Screws

Diameter**	Length*
6.5-10.5	60-100



### Cobalt Chrome Rods

Diameter	Length
5.5	220, 400

Dimensions expressed in millimeters

\*\* 1mm increments

\* 10mm increments

