

# Lucent<sup>®</sup> XP

Expandable Lumbar Interbody System

With Ti-Bond<sup>®</sup> Titanium Porous Coating



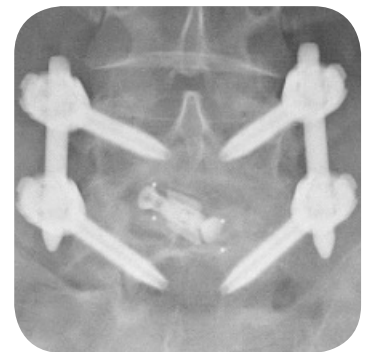
Expanding Options.  
Proven Technology.



# Lucent<sup>®</sup> XP | Expandable Lumbar Interbody System

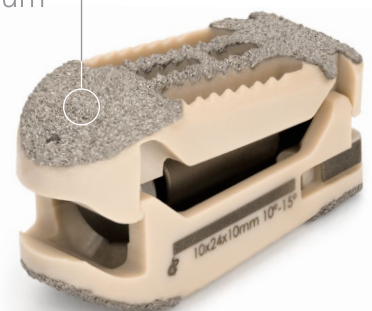
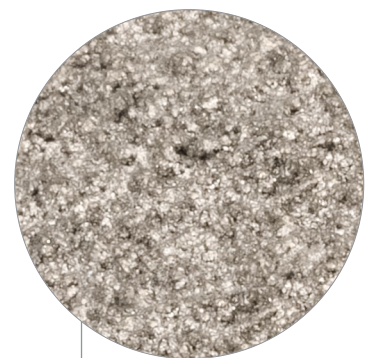
## Expanding Options

- 3mm of expansion
- Up to 15° of lordosis
- Multiple implant options
- Self-locking expansion mechanism

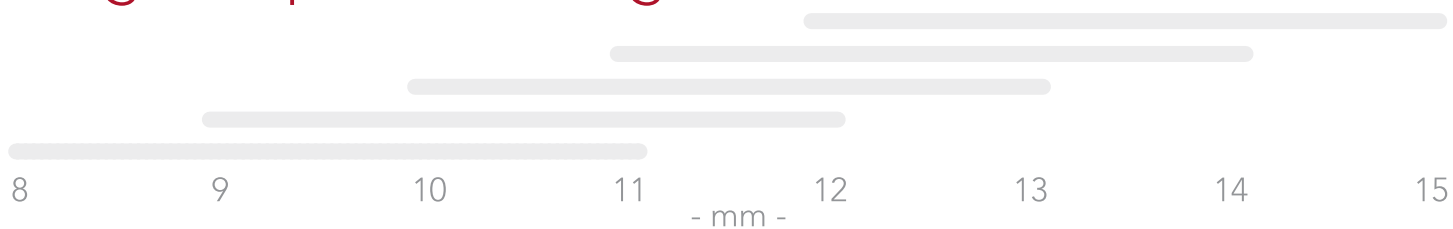


## Ti-Bond<sup>®</sup>

- Hydrophilic
- Radiolucent
- Increased surface topography
- Designed for immediate stability
- Elastic modulus and strength of PEEK with benefits of microtextured titanium



## Height Expansion Ranges



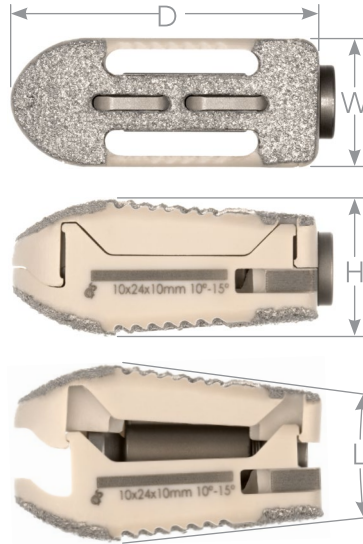
## Coupled Lordosis

- Controlled placement and expansion to fit varying patient anatomy
- Lordotic angle increases concurrently with height expansion
- Restores disc height and sagittal balance



# Lucent<sup>®</sup> XP

## Expandable Lumbar Interbody System With Ti-Bond<sup>®</sup> Titanium Porous Coating



Width	Depth	Height	Lordosis
10	24	8-12*	5-10°, 10-15°
10	27	8-12*	5-10°, 10-15°
10	32	8-12*	5-10°, 10-15°

Dimensions expressed in millimeters  
\*1mm increments, expansion adds 3mm

