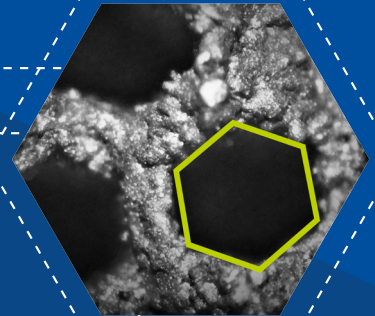
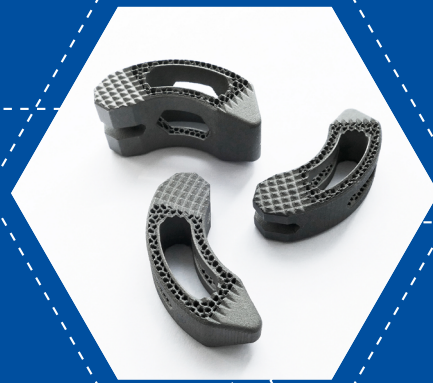


3D PRINTED TITANIUM TLIF

Hexanium TLIF



High roughness surface

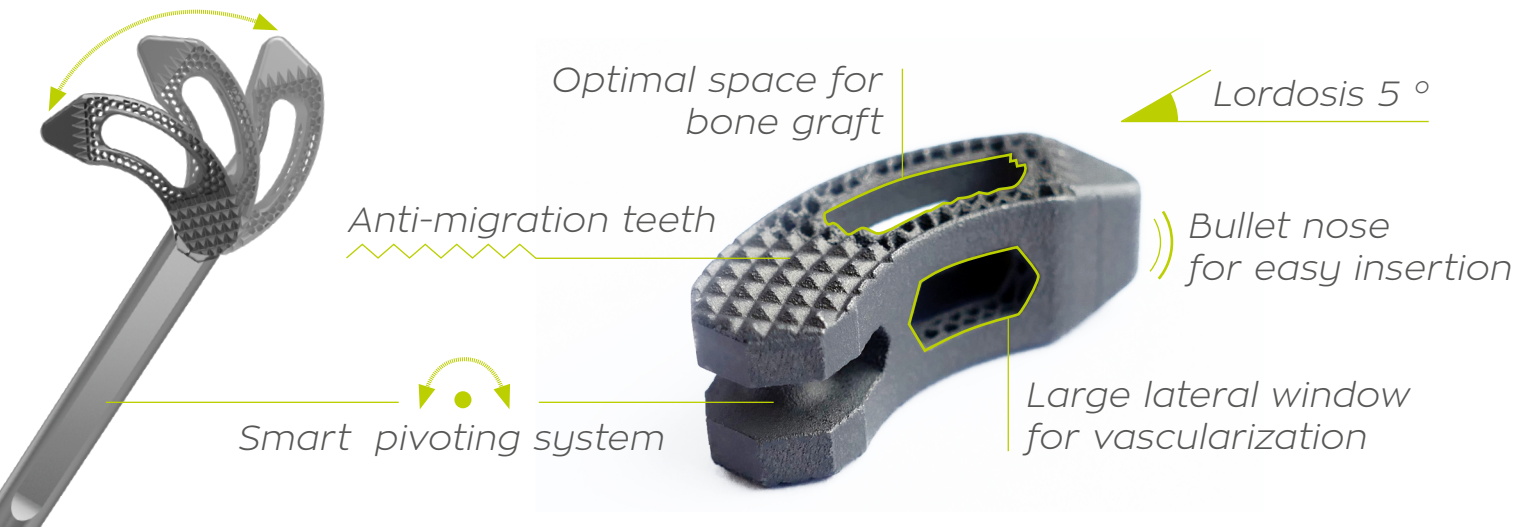
Great porosity for osseointegration

SPINEVISION®

HEXANIUM TLIF FEATURES & BENEFITS

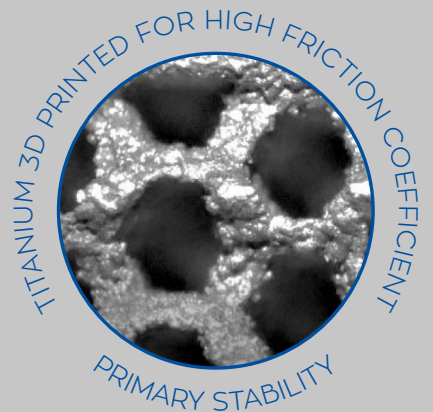
Our titanium 3D laser printed Hexanium TLIF offers :

- Rough surface : strong primary integration •
- Maximized porosity : optimal bone in-growth, endplate to endplate •



Hexanium TLIF combines the benefits of 3D laser printing technology and honeycomb-like structure :

- Roughened titanium surfaces demonstrated fast osseointegration & high friction coefficient
- Resistance of honeycomb-like structure allows for large windows reducing the risk of subsidence



Hexanium TLIF is designed to fit all patients' anatomy thanks to 20 cage references :

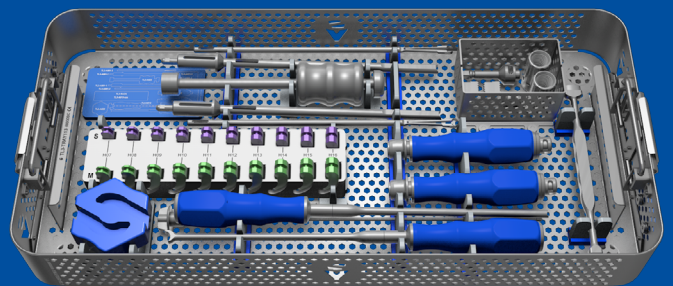
TL3-CSXX or TL3-CMXX

XX : Height from 7 to 16 mm in 1 mm inc.

Two different footprints :

S : Small : Length 28 mm x Width 9 mm

M : Medium : Length 32 mm x Width 10,5 mm

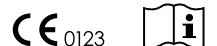


Distributed by



SPINEVISION
10 Rue de la Renaissance
92160 ANTONY - FRANCE
Phone : +33 1 53 33 25 25

www.spinevision.net



See package insert
for labeling limitation

Non contractual document
GTL3-L_02GB