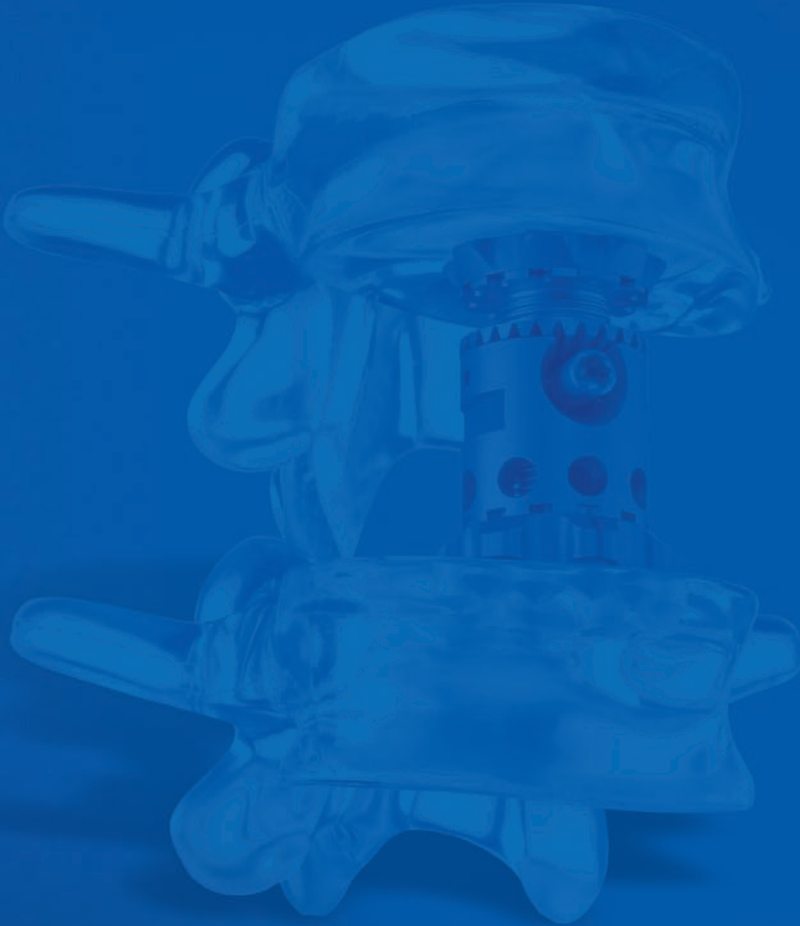


obelisc LE[®]

vertebral body replacement



100Years

Over A Century Of Innovation

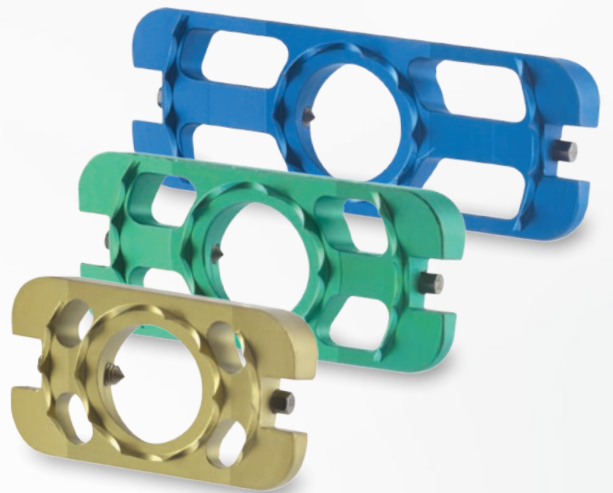
Ulrich
medical USA

System - Lateral Surgical Approaches

- Vertebral body replacement for bridging defects and bony voids
- Long end plates to bridge vertebral body to assist with stability
- Thoracic, lumbar - lateral approach
- obelisc LE uses world-class obelisc instrumentation and expandable cage technology
- Can be used in conjunction with golden gate® lateral plating option and uCentum® pedicle screw system

Color Coded End Plates

Color	Size	Lordosis
blue	20 x 55mm	0°, 5°, 10°, 15°
green	20 x 45mm	0°, 5°, 10°, 15°
yellow	20 x 35mm	0°, 5°, 10°, 15°



Indications

The obelisc vertebral body replacement is intended for use during open surgical procedures in the thoracolumbar spine (T1-L5) to replace a collapsed, damaged, or unstable vertebral body due to tumor or trauma (e.g., fracture).

The obelisc vertebral body replacement is intended to be used with supplemental internal spinal fixation systems that have been labeled for use in the thoracic and lumbar spine (i.e., posterior pedicle screw and rod systems, anterior plate systems, and anterior screw and rod systems).

The use of bone grafting material with the obelisc vertebral body replacement is optional.

Advantages

End Plate Options

- 35, 45, 55mm lengths and 0, 5, 10 and 15° lordosis
- Large graft windows for improved fusion
- 1.5mm spikes to minimize migration
- Color coded for ease of use

Exact Height Adjustment

- Low profile distractor
- Continuous expansion in situ - gear driven mechanism
- Unlimited height adjustment options in range

Large Rectangular End Plates

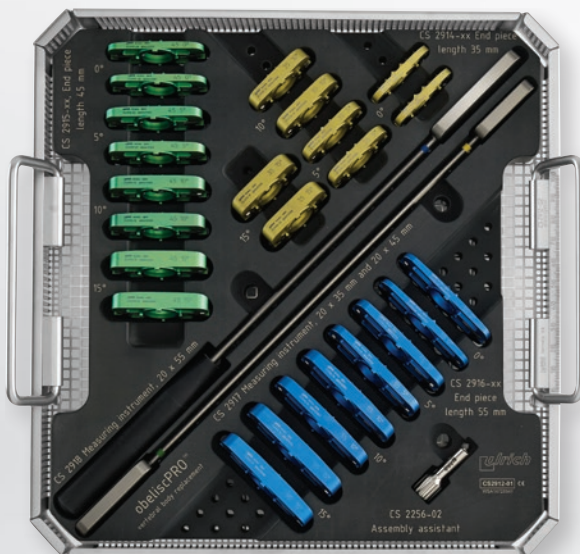
- Minimize subsidence
- Improve stability

Quick and Easy

- Simple, fast
- Easy to use and assemble



Completely assembled implants, 3 length options



Trays

- Stand alone tray
- Simple design and easy to use
- Color coded for fast identification
- Color coded lollipop measuring instruments

Components

Implants	Width x Length	Angle	Product #
obelisc lateral end plate	20 x 35mm - yellow	0°	CS 2914-00
		5°	CS 2914-05
		10°	CS 2914-10
		15°	CS 2914-15
obelisc lateral end plate	20 x 45mm - green	0°	CS 2915-00
		5°	CS 2915-05
		10°	CS 2915-10
		15°	CS 2915-15
obelisc lateral end plate	20 x 55mm - blue	0°	CS 2916-00
		5°	CS 2916-05
		10°	CS 2916-10
		15°	CS 2916-15
Measuring instrument for lateral end plates	35, 45mm		CS 2917
Measuring instrument for lateral end plates	55mm		CS 2918
Assist handle			CS 2256-02

100 years

Over A Century Of Innovation



18221 Edison Avenue, Chesterfield, MO 63005
 Phone: 866.519.0268 | Fax: 636.519.0271
www.ulrichmedicalusa.com
 IFU: www.ifu.ulrichmedical.com



patented
or/and
pat. pend.

World Headquarters
ulrich medical®
 Buchbrunnenweg 12
 89081 Ulm, Germany