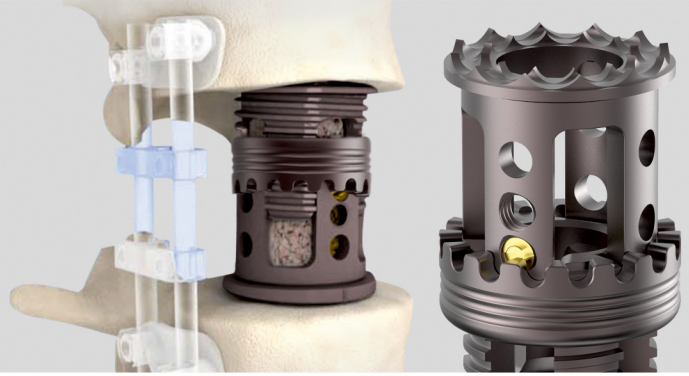


Xpendriv Cage

Vertebral Body Replacement System



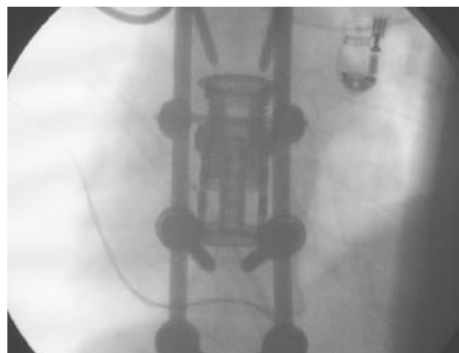
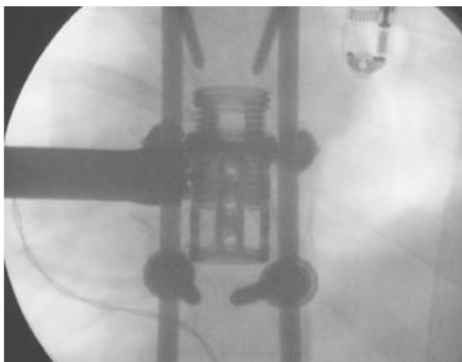
The Xpendriv Cage Vertebral Body Replacement System consists of a Distractible In Situ (DIS) implant, which enables the surgeon to customize the height of the implant after implantation. The pre-assembled Xpendriv Cage implant distracts with a low profile inside thread design. Extensions (if needed) and modular end caps snap into each end of the implant for quick assembly. The end caps are available in 0° or with angulation to match either the lordosis or kyphosis of the spinal segment. The implant and end caps are composed of titanium alloy.

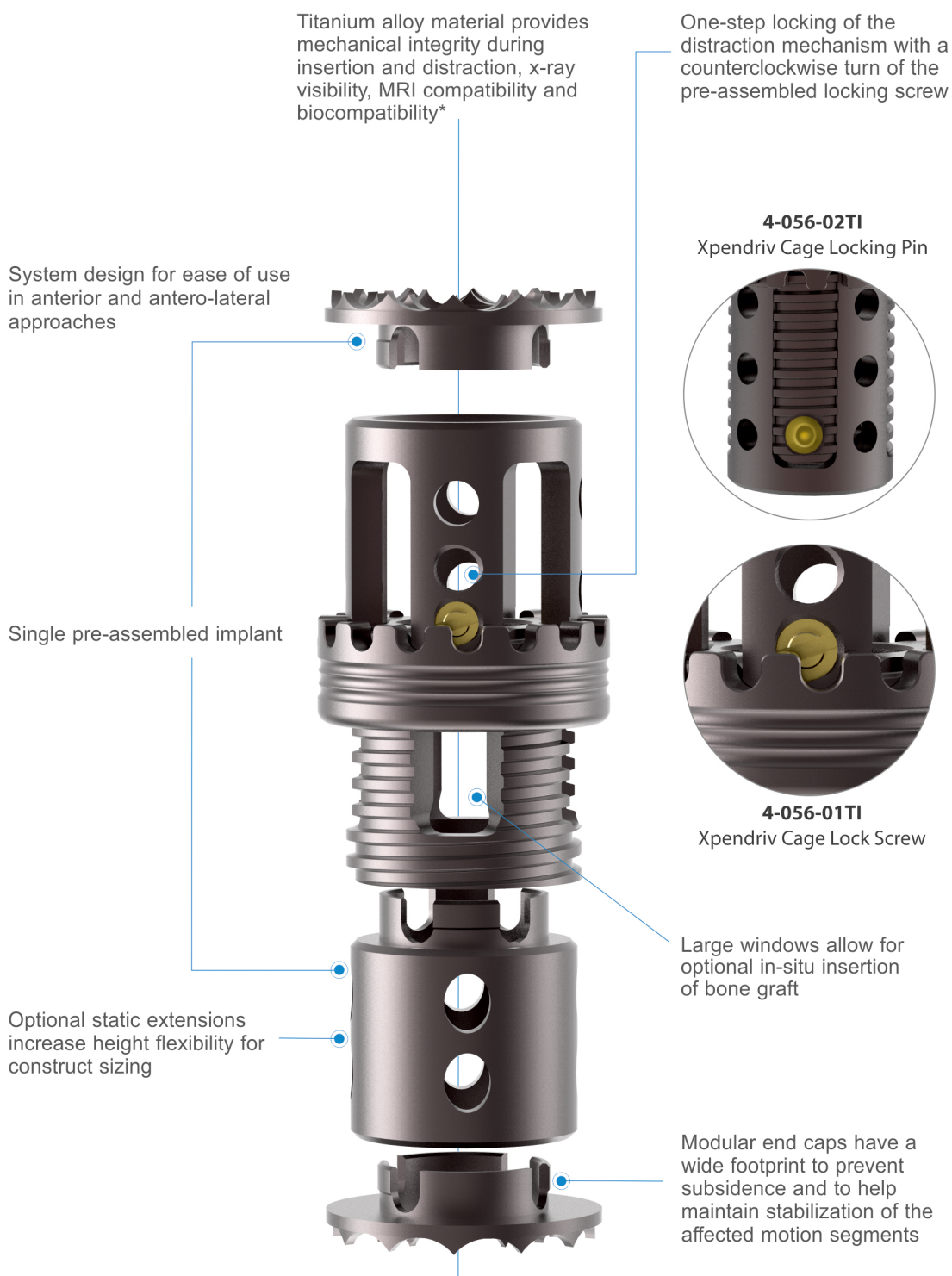
System Indications

Auxein Spine's Xpendriv System is intended to replace a vertebral body or an entire vertebra. It is for use in the thoracolumbar spine (T1-L5) to replace a collapsed, damaged or unstable vertebral body or vertebra resected or excised during total and partial corpectomy and vertebrectomy procedures due to tumor or trauma (i.e., fracture). The Xpendriv System is intended to be used with supplemental internal fixation. The supplemental internal fixation systems that may be used with Xpendriv include. The use of bone graft with the Xpendriv System is optional.

Treatment

The patient underwent treatment of this injury in two stages. On post-injury day 1, the patient was taken to the OR for posterior fixation and fusion (T6-T12) and reduction of the kyphosis. After stabilizing the patient in intensive care for one week, anterior spinal surgery was performed on day 7 via an anterior approach. A right sided thoracotomy was performed resecting the 8th rib. Corpectomies of both vertebral bodies (T8 and T9) were performed using the resected bone as bone graft. After positioning the Xpendriv Cage and expanding it into final position the autologous bone was placed around the implant. Use of the Xpendriv expandable implant was particularly helpful in achieving stable anterior device placement since intraoperative distraction between T7 and T10 was not possible because of the posterior fixation.





Xpendriv Cage

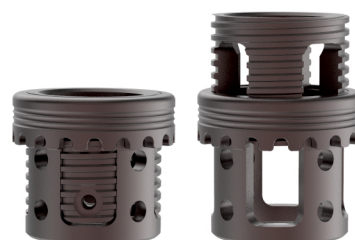

Code	Product Specification	Material
4-001-020TI	Ø18mm X 20mm	Ti



Code	Product Specification	Material
4-001-025TI	Ø18mm X 25mm	Ti



Code	Product Specification	Material
4-001-032TI	Ø18mm X 32mm	Ti



Code	Product Specification	Material
4-002-025TI	Ø22mm X 25mm	Ti



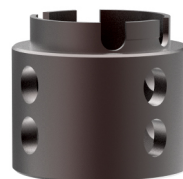
Code	Product Specification	Material
4-002-032TI	Ø22mm X 32mm	Ti



Code	Product Specification	Material
4-002-037TI	Ø22mm X 37mm	Ti

Xtension


Code	Product Specification	Material
4-003-018TI	Ø18mm	TI



Code	Product Specification	Material
4-003-022TI	Ø22mm	TI

X cap


Code	Product Specification	Material
4-004-00TI	Ø18mm, 0°	TI



Code	Product Specification	Material
4-004-03TI	Ø18mm, 3°	TI



Code	Product Specification	Material
4-004-08TI	Ø18mm, 8°	TI



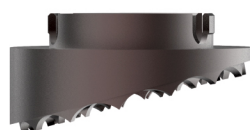
Code	Product Specification	Material
4-005-00TI	Ø22mm, 0°	TI



Code	Product Specification	Material
4-005-03TI	Ø22mm, 3°	TI

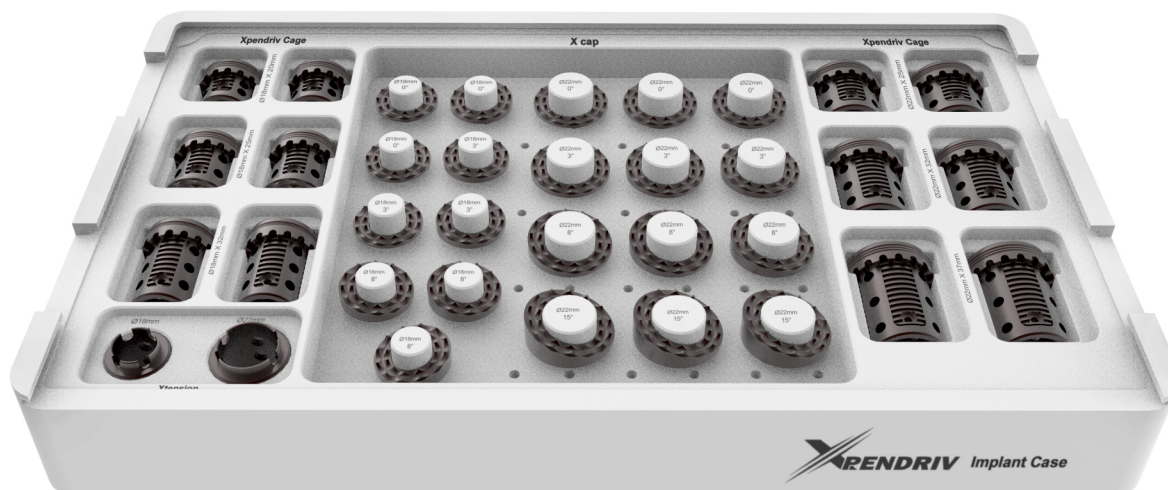


Code	Product Specification	Material
4-005-08TI	Ø22mm, 8°	TI



Code	Product Specification	Material
4-005-15TI	Ø22mm, 15°	TI

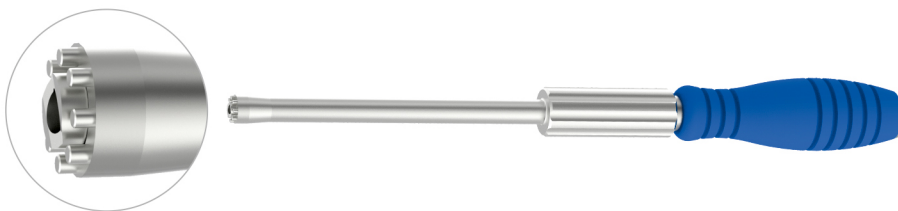
4-046-01 : Implant Case (For Xpendriv Cage)



Code	Product Specification	Qty.
4-001-020TI	Xpendriv Cage Ø18mm X 20mm	2
4-001-025TI	Xpendriv Cage Ø18mm X 25mm	2
4-001-032TI	Xpendriv Cage Ø18mm X 32mm	2
4-002-025TI	Xpendriv Cage Ø22mm X 25mm	2
4-002-032TI	Xpendriv Cage Ø22mm X 32mm	2
4-002-037TI	Xpendriv Cage Ø22mm X 37mm	2
4-003-018TI	Xtension Ø18mm	1
4-003-022TI	Xtension Ø22mm	1
4-004-00TI	X cap Ø18mm, 0°	3
4-004-03TI	X cap Ø18mm, 3°	3
4-004-08TI	X cap Ø18mm, 8°	3
4-005-00TI	X cap Ø22mm, 0°	3
4-005-03TI	X cap Ø22mm, 3°	3
4-005-08TI	X cap Ø22mm, 8°	3
4-005-15TI	X cap Ø22mm, 15°	3

Xpendriv Cage Instruments
7-003-01

Xpender


7-003-02

Xpender Inside Shaft


7-003-03

Screw Driver for Xpendriv Cage


7-003-04

Small Graft Impactor for Xpendriv Cage


7-003-05

Graft Impactor for Xpendriv Cage


7-003-06

X Cap Remover for Xpendriv Cage


7-003-07

Container for Xpendriv Cage



7-003 : Xpendriv Cage Instrument Set


Code	Product Specification	Qty.
7-003-01	Xpender	1
7-003-02	Xpender Inside Shaft	1
7-003-03	Screw Driver for Xpendriv Cage	1
7-003-04	Small Graft Impactor for Xpendriv Cage	1
7-003-05	Graft Impactor for Xpendriv Cage	1
7-003-06	X Cap Remover for Xpendriv Cage	1
7-003-07	Container for Xpendriv Cage	1
4-046-01	Implant Case (For Xpendriv Case)	1