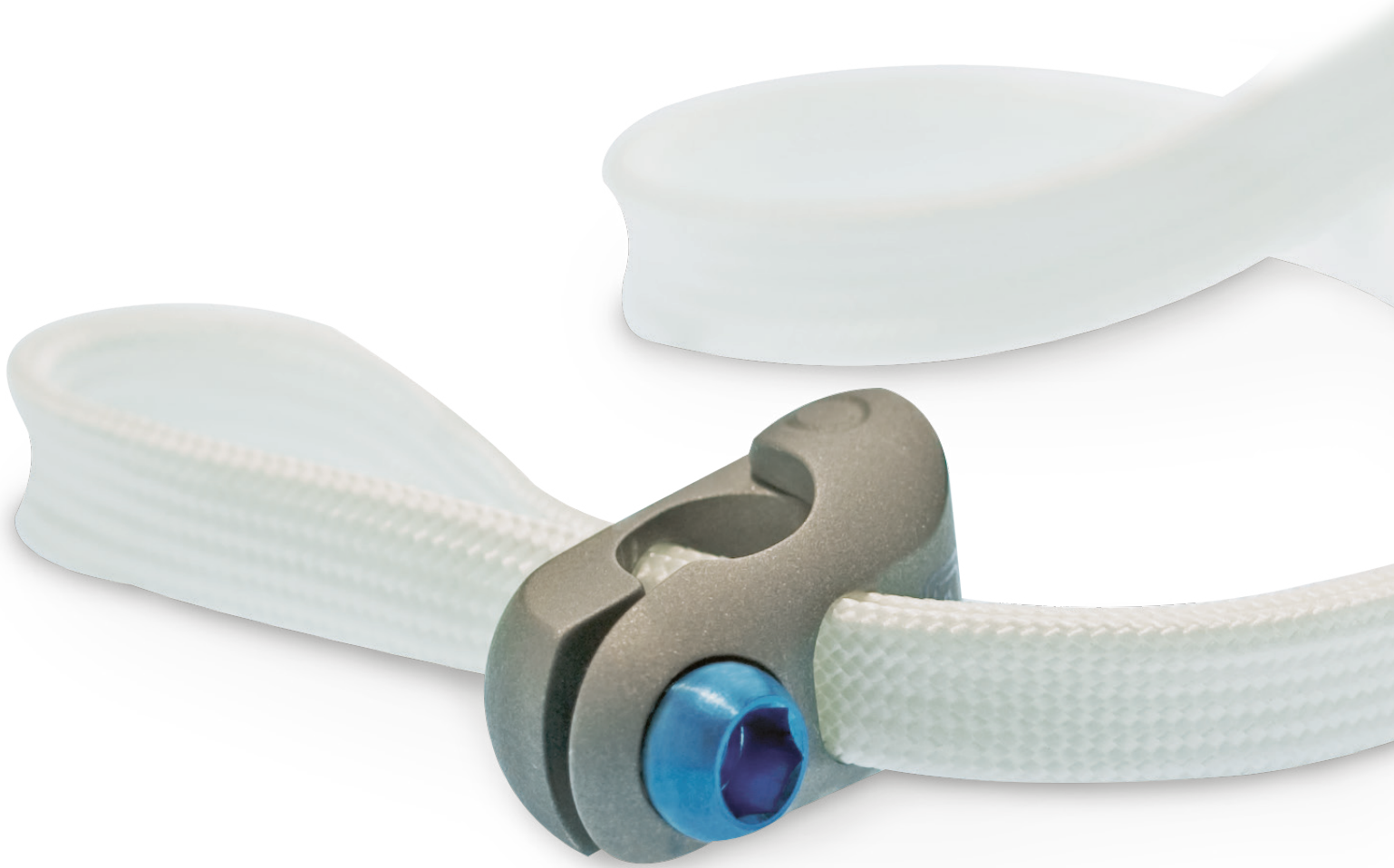




ZIMMER BIOMET

Your progress. Our promise.®



Thoracolumbar Solutions

# Universal Clamp<sup>®</sup>

Spinal Fixation System

A band. A clamp. A simplified solution for spinal fixation.

# Universal

## CLAMP SYSTEM

The Universal Clamp System provides a revolutionary approach to spinal fixation. It doesn't replace standard techniques, just preconceived notions. This versatile device uses a band, a clamp and a set screw to simplify the correction of complex spinal pathologies. The unique design of the Universal Clamp Implant provides for an arching-translation correction maneuver. It's an innovative technique that was created with your needs in mind, making surgical procedures intuitive, sophisticated and elegantly simple.



### Universal Clamp System Features

- A pedicle-sparing surgical technique that simplifies translation and reduction
- A patented design that increases the reduction force that can be applied without bony fracture
- Immediate stabilization of the treated area
- Minimal instrumentation for greater simplicity



### Anatomy Sparing and Adaptable

The flexible polyester band of the Universal Clamp System offers a pedicle-sparing approach that is adaptable to a variety of spinal pathologies and provides instantaneous stability when tightened.



### The Best Ideas Are Often the Simplest

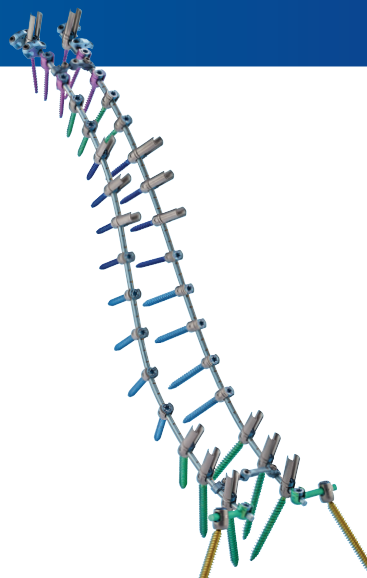
With minimal instrumentation, the Universal Clamp System offers a simple, intuitive approach that reduces clutter in the surgical field, improves surgical flow and efficiently corrects spinal pathologies.



### Greater Strength, Fewer Limitations

The Universal Clamp System uses a simple sublaminar technique that provides optimal bone/implant interface strength while avoiding the limitations of hooks, wires and screws.

**The Universal Clamp System Can Be Used in  
Conjunction With the Vitality® Spinal Fixation System.**



## EXPERIENCE THE BENEFITS OF THE UNIVERSAL CLAMP SYSTEM



### Progressive Correction

Reduction instrument allows for a progressive correction of the spine.



### Polyester Band

Biologically compatible polyester band reduces implant/bone contact stress.



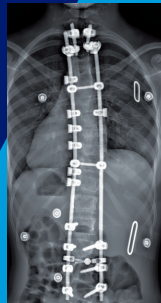
### Titanium and Stainless Steel Clamp

The clamp can be attached to a rod to reproduce native spinal curvature. Available in multiple sizes to accommodate various rod diameters: 4.5 mm (Ti); 4.75 mm (Ti); 5.5 mm (Ti & SS); 6.0 mm (Ti & SS); 6.35 mm (Ti & SS).

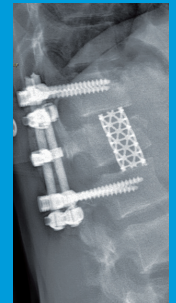
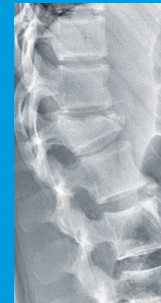
## CLINICAL EVIDENCE



Girl, 16, AIS Lenke 1. Main thoracic curve: 70°.



Follow-up at 6 months. Main thoracic curve correction: 85%.



Female, riding accident, burst fracture on T12 (T11–L1 kyphotic angle of 22°). Treated by a circumferential osteosynthesis with 4 screws, 4 Universal Clamp Implants and 1 anterior cage (T11–L1 kyphotic angle of 7°).

**A HIGHLY COMPATIBLE SOLUTION:** At Zimmer Biomet Spine we are proud to deliver a complete line of comprehensive, best-in-class spinal solutions. The Universal Clamp System has been designed to interface seamlessly with a variety of Zimmer Biomet Spine thoracolumbar systems in an effort to meet a wide range of diverse surgical needs. This comprehensive, compatible approach is just one way we deliver the solutions you need to provide real patient results.



**ZIMMER BIOMET**  
Your progress. Our promise.®

800.447.3625 / [zimmerbiomet.com](http://zimmerbiomet.com)

©2017 Zimmer Biomet Spine, Inc. All rights reserved.

All content herein is protected by copyright, trademarks and other intellectual property rights, as applicable, owned by or licensed to Zimmer Biomet Spine, Inc. or its affiliates unless otherwise indicated, and must not be redistributed, duplicated or disclosed, in whole or in part, without the express written consent of Zimmer Biomet Spine. This material is intended for health care professionals, the Zimmer Biomet Spine sales force and authorized representatives. Distribution to any other recipient is prohibited.

For product information, including indications, contraindications, warnings, precautions, potential adverse effects and patient counseling information, see the package insert and [www.zimmerbiomet.com](http://www.zimmerbiomet.com).

1047.2-US-en-REV1217