



1

After having carried out the anterior approach, start discectomy in order to position the distractor. Distract sufficiently to place a spacer and complete the discectomy.

Note: The spacer does not serve as a distractor!

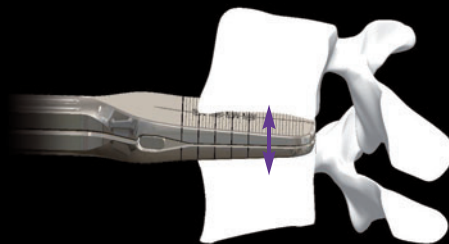
intersomatic distractor:
LIN-00 00 02-N
spacer: LIN-00 SP 08-N,
LIN-00 SP 10-N, LIN-00 SP 12-N



2

Choose a trial implant (small, medium, large), insert it into the disc space and take out the spacer. Carry-out an AP and lateral control and mark the vertebral body with the chisel when the trial implant is positioned in the center. Take out the trial implant.

trial implant SM 35x27: LIN-00 SM TR-N
trial implant ME 39x30: LIN-00 ME TR-N
trial implant LA 42x31: LIN-00 LA TR-N
chisel: LIN-00 00 06-N

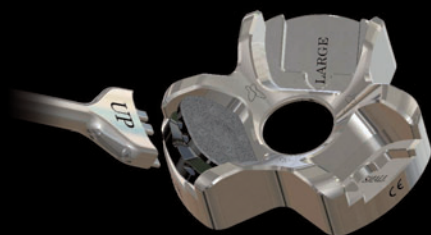


3

Position the intersomatic distractor in the middle of the vertebral bodies between the endplates and sufficiently posterior. Carry-out a lateral control. Open the intersomatic space progressively and verify the stability until sufficient. Choose the appropriate height of the prosthesis by reading the markings. It is not recommended to overdistract.

intersomatic distractor:
LIN-00 00 02-N





4

Insert the corresponding spacer while releasing and taking out the intersomatic distractor. Make sure that no disc tissue is left over. Choose for the fixed or mobile insert and the angulation. Attach the prosthesis onto the implant holder by using the assembly base.

implant holder: LIN-00 00 01-N
assembly base: LIN-00 00 04-N



5

Insert the prosthesis while carrying out a lateral control. Take care about central positioning (marked vertebral body). Implant the prosthesis and take out the spacer. Disconnect the implant holder. Carry-out AP control. Impact prosthesis with the pusher if necessary.

pusher: LIN-00 00 03-N



6

Final construct.