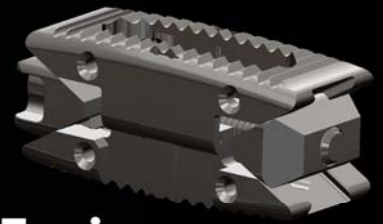




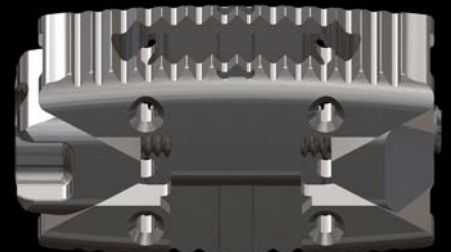
Opticage®

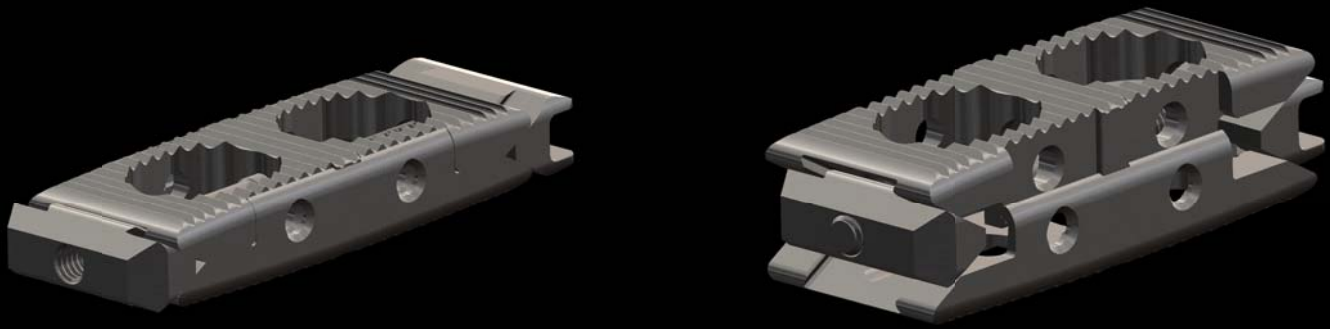


The Ultimate Choice for Interbody Fusion

The only **expandable** cage that offers unparalleled **strength**, intraoperative **flexibility**, maximum graft **containment**, precise anatomical **fit** and a team of technical professionals who are prepared to work with you on a personal basis.

- » Updated, low-profile design with improved ergonomics
- » Proven technology and excellent clinical results in thousands of uses worldwide
- » All titanium design allows for better osseointegration compared to PEEK
- » Infinitely adjustable height from 9mm to 14mm (not 1mm increments), providing a custom fit for each patient and each level treated
- » Easily retracted and repositioned as many times as necessary during surgery, providing unmatched intraoperative flexibility
- » Various footprints for use in PLIF, TLIF, and Lateral Approaches
- » 3.7mm tapered nose height eases into small disc spaces
- » Minimized insertion height provides ease of entry and may decrease risk of damage to vertebral endplates
- » Larger graft window and graft containment compared to other expandable cages on the market
- » Can be filled with additional graft after expansion, unlike most other expandable cages on the market
- » Superior torsional strength
- » Superior expansion strength, in some cases more than twice that of other expandable cages on the market
- » Convex endplates and controlled expansion deliver a precise anatomical fit, more closely matching natural anatomy than other expandable cages on the market
- » Expansion provides immediate increase in disc height and indirect decompression
- » Allows for immediate stability between vertebral bodies
- » Specially designed teeth for enhanced endplate purchase
- » Utilizing the 11.5mm Optiport access instrumentation allows for percutaneous procedure
- » Pre-packaged, sterile implants reduce the burden on central processing departments
- » Personalized customer support from clinical and technical professionals





Opticage® Sizes

Proposed Use	Sterile Catalog Number	Expanded Width x Length	In-stock / Special Order	Graft Contact Comparison*	Graft Volume Comparison* (Collapsed – Expanded)
PerX360, TLIF, PLIF	9180-00	9mm x 21mm	In-stock	35% more [†]	157 – 236% more [†]
	9180-01	9mm x 26mm	In-stock	22% more [†]	92 – 158% more [†]
	9180-02	9mm x 30mm	Special Order	53% more [†]	87 – 153% more [†]
TLIF PLIF	9180-03	10mm x 21mm	Special Order	83% more	182 – 269% more
	9180-04	10mm x 26mm	Special Order	88% more	108 – 178% more
	9180-05	10mm x 30mm	Special Order	105% more	100 – 169% more
	9180-06	11mm x 21mm	In-stock	N/A	N/A
	9180-07	11mm x 26mm	In-stock	35% more ^{††}	31 – 74% more ^{††}
	9180-08	11mm x 30mm	Special Order	59% more ^{††}	28 – 72% more ^{††}
	9180-09	12mm x 21mm	Special Order	N/A	N/A
	9180-10	12mm x 26mm	Special Order	61% more	37 – 82% more
	9180-11	12mm x 30mm	Special Order	90% more	34 – 79% more
Lateral	9180-12	16mm x 40mm	Special Order	19% more	3 – 19% more
	9180-13	16mm x 45mm	Special Order	N/A	N/A
	9180-14	16mm x 50mm	Special Order	N/A	N/A
	9180-15	16mm x 55mm	Special Order	N/A	N/A
	9180-16	18mm x 40mm	Special Order	9% more	3 less – 9% more
	9180-17	18mm x 45mm	In-stock	15% more	3 – 16% more
	9180-18	18mm x 50mm	Special Order	20% more	7 – 20% more
	9180-19	18mm x 55mm	In-stock	23% more	10-24% more
	9180-20	22mm x 40mm	Special Order	6% less	3 – 13% less
	9180-21	22mm x 45mm	Special Order	1% more	7% less – 3% more
	9180-22	22mm x 50mm	Special Order	6% less	4 – 14% less
	9180-23	22mm x 55mm	Special Order	1% less	9% less – 1% more

To hear more from our team, reach out to us at:

perx360@i-spineinc.com

Interventional Spine®

800-497-0484

www.i-spineinc.com