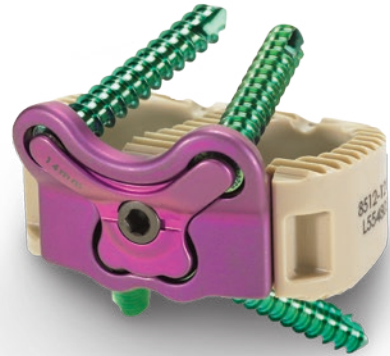
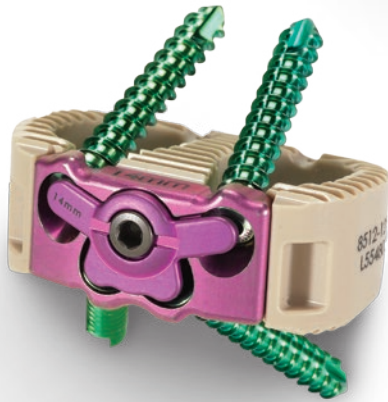
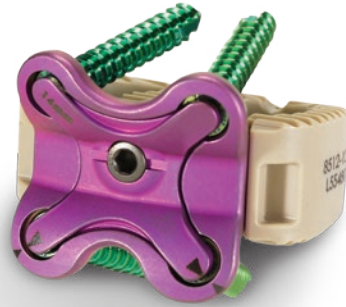




ZIMMER BIOMET

Your progress. Our promise.™



Thoracolumbar Solutions

# Durango®

## ALIF System

The Durango System features unique flexibility that addresses a variety of anatomic demands and requirements.

# Versatility ON CALL

The Durango System is a modular, integrated plate and interbody system for anterior lumbar interbody fusion (ALIF). The plate component is available in three configurations, and it offers different screw positions and angles that can address the unique anatomic demands of each patient.



## Simplicity

- Zero-plate option delivers a no-profile implant that avoids contact with any soft-tissue postoperatively
- Half-plate and full-plate options reduce the instrumentation angulation required to insert screws
- Stand-alone construct eliminates the need for any supplemental posterior or anterior fixation



## Security

- Cover plates that correspond to each of the three plating options prevent screw back out
- Four screws in all plating options offer secure fixation, regardless of plating option



## Customization

- Three plate configurations allow you to tailor the construct to patient anatomy and work around hardware at adjacent levels
- Wide variety in screw offerings provides choices that promote confidence
- Two footprints offered in six different heights in both 0° and 5° profiles ensure optimal anatomic fit
- Innovative MIS options offer flexibility

## IMPLANT DIMENSIONS

### Interbodies

FOOTPRINT	LORDOSIS	HEIGHT
Small, 24mm × 32mm	7°	12mm   14mm   16mm   18mm
Large, 27mm × 36mm	7°	12mm   14mm   16mm   18mm
Small, 24mm × 32mm	12°	12mm   14mm   16mm   18mm
Large, 27mm × 36mm	12°	12mm   14mm   16mm   18mm

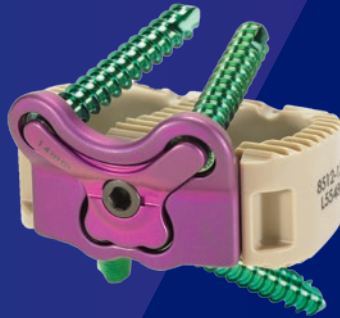
### Plates and Cover Plates

TYPE	HEIGHT
Zero-plate	12mm   14mm   16mm   18mm
Half-plate	12mm   14mm   16mm   18mm
Full-plate	12mm   14mm   16mm   18mm



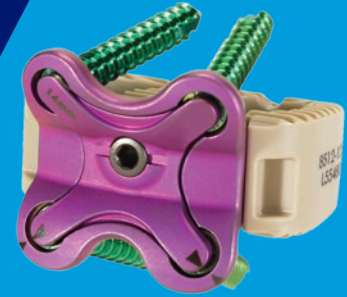
### Zero-Plate

- Flush with the anterior cortex to avoid interference with the great vessels
- Low screw angles facilitate screw placement



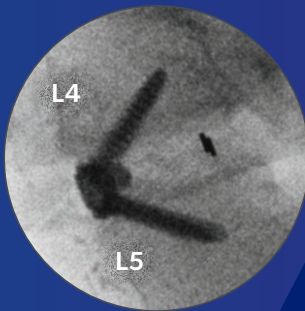
### Half-Plate

- Multiple screw positions and orientations provide options for avoiding soft tissues
- Straight instruments may be used in the L5 vertebral body

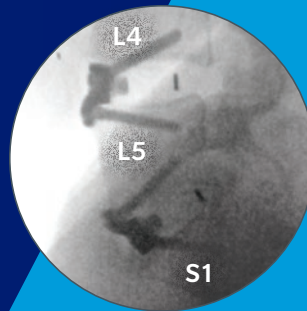


### Full-Plate

- Screws engaging the anterior cortex provide additional stability
- Very low-profile anterior lumbar plate

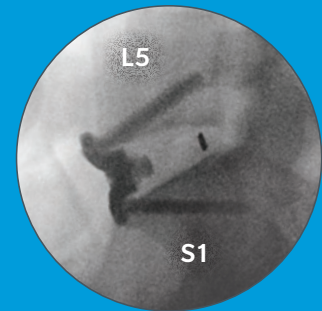


L4-L5: Zero-plate selected to avoid interference with the great vessels.



L4-L5: Half-plate (reversed) selected to allow L5 instruments to safely avoid a high bifurcation.

L5-S1: Half-plate selected to allow for the use of straight instruments into L5.



L5-S1: Full-plate selected for additional stability.

## Screws

TYPE	DIAMETER	LENGTH
Variable	4.5mm	20mm   25mm   30mm
Fixed	4.5mm	20mm   25mm   30mm
Variable	5.0mm	20mm   25mm   30mm
Fixed	5.0mm	20mm   25mm   30mm



**ZIMMER BIOMET**  
Your progress. Our promise.™

800.447.3625 / [zimmerbiomet.com](http://zimmerbiomet.com)

©2017 Zimmer Biomet Spine, Inc. All rights reserved.

All content herein is protected by copyright, trademarks and other intellectual property rights, as applicable, owned by or licensed to Zimmer Biomet Spine, Inc. or its affiliates unless otherwise indicated, and must not be redistributed, duplicated or disclosed, in whole or in part, without the express written consent of Zimmer Biomet Spine. This material is intended for health care professionals, the Zimmer Biomet Spine sales force and authorized representatives. Distribution to any other recipient is prohibited.

For product information, including indications, contraindications, warnings, precautions, potential adverse effects and patient counseling information, see the package insert and [www.zimmerbiomet.com](http://www.zimmerbiomet.com).

1019.1.US-en-REV0417