

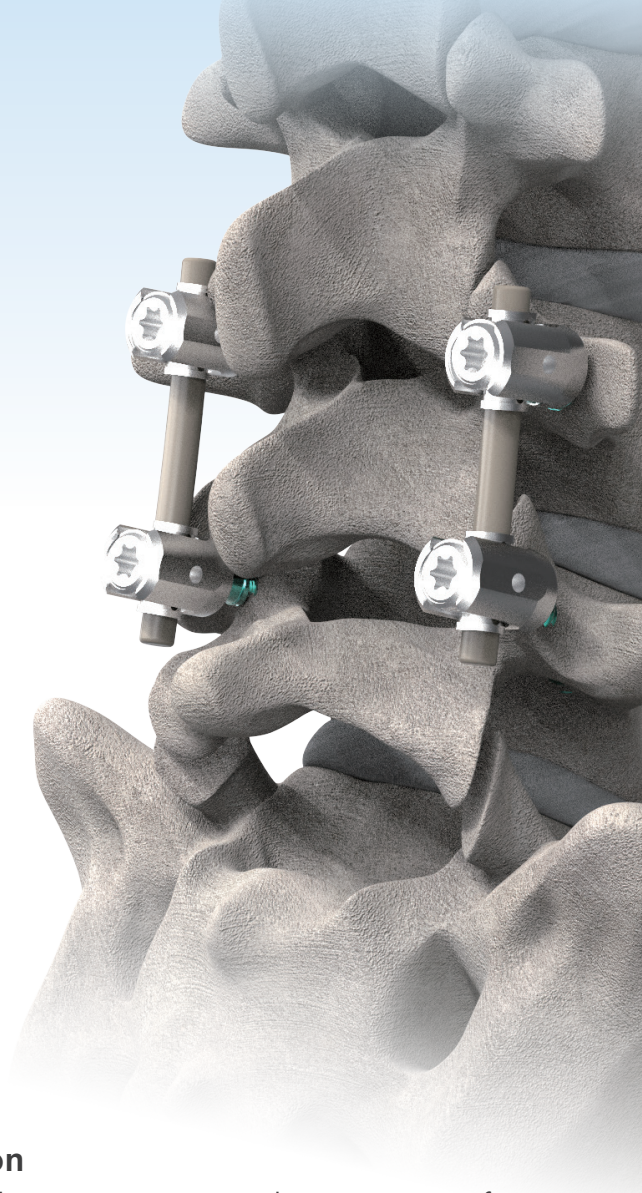
K-Rod II

Posterior Dynamic Stabilization System

TREND Spinal Fixation System-STEP Series

Compared with the traditional spinal fixation system, K-Rod II series solves the problem of the stress shielding effect. The feature of flexible cable rod is similar to the natural mobility of a human body, which can avoid degenerative lesions of adjacent vertebrae.

In addition to relieving the compressed nervous system, it can also provide dynamic stabilization of the vertebral body and improve the patient's quality of life after the operation.

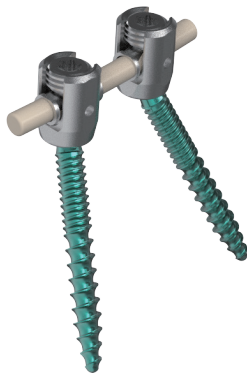
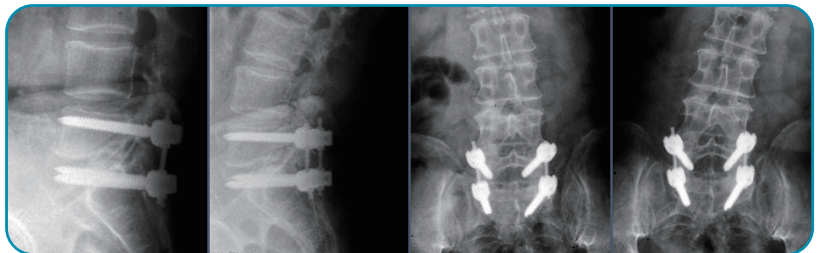


Features



- **Dynamic stabilization**

The system is designed to preserve natural movements of vertebrae during flexion, extension, lateral bending, and rotation.



- **Maintain the intervertebral height**

- **Provide support and stability for vertebral bodies**

- **Easy-to-use**

The surgical technique of K-Rod II is the same as general spinal pedicle screw fixation surgery.



K-Rod Posterior Dynamic Stabilization System

Product Specification

Multi Axial Screw



REF	Dia (mm)	Length (mm)	REF	Dia (mm)	Length (mm)
1116-4525	4.5	25	1116-6525	6.5	25
1116-4530	4.5	30	1116-6530	6.5	30
1116-4535	4.5	35	1116-6535	6.5	35
1116-4540	4.5	40	1116-6540	6.5	40
1116-4545	4.5	45	1116-6545	6.5	45
1116-4550	4.5	50	1116-6550	6.5	50
1116-4555	4.5	55	1116-6555	6.5	55
1116-4560	4.5	60	1116-6560	6.5	60
1116-4565	4.5	65	1116-6565	6.5	65
1116-4570	4.5	70	1116-6570	6.5	70
1116-4575	4.5	75	1116-6575	6.5	75
1116-4580	4.5	80	1116-6580	6.5	80
1116-5025	5	25	1116-7025	7	25
1116-5030	5	30	1116-7030	7	30
1116-5035	5	35	1116-7035	7	35
1116-5040	5	40	1116-7040	7	40
1116-5045	5	45	1116-7045	7	45
1116-5050	5	50	1116-7050	7	50
1116-5055	5	55	1116-7055	7	55
1116-5060	5	60	1116-7060	7	60
1116-5065	5	65	1116-7065	7	65
1116-5070	5	70	1116-7070	7	70
1116-5075	5	75	1116-7075	7	75
1116-5080	5	80	1116-7080	7	80
1116-5525	5.5	25	1116-7525	7.5	25
1116-5530	5.5	30	1116-7530	7.5	30
1116-5535	5.5	35	1116-7535	7.5	35
1116-5540	5.5	40	1116-7540	7.5	40
1116-5545	5.5	45	1116-7545	7.5	45
1116-5550	5.5	50	1116-7550	7.5	50
1116-5555	5.5	55	1116-7555	7.5	55
1116-5560	5.5	60	1116-7560	7.5	60
1116-5565	5.5	65	1116-7565	7.5	65
1116-5570	5.5	70	1116-7570	7.5	70
1116-5575	5.5	75	1116-7575	7.5	75
1116-5580	5.5	80	1116-7580	7.5	80
1116-6025	6	25			
1116-6030	6	30			
1116-6035	6	35			
1116-6040	6	40			
1116-6045	6	45			
1116-6050	6	50			
1116-6055	6	55			
1116-6060	6	60			
1116-6065	6	65			
1116-6070	6	70			
1116-6075	6	75			
1116-6080	6	80			

Cable Rod



REF	Dia (mm)	Length (mm)
1611-5004	5	40
1611-5005	5	50
1611-5006	5	60
1611-5007	5	70
1611-5008	5	80
1611-5009	5	90
1611-5010	5	100
1611-5011	5	110
1611-5012	5	120
1611-5013	5	130
1611-5014	5	140
1611-5015	5	150
1611-5016	5	160
1611-5017	5	170
1611-5018	5	180
1611-5019	5	190
1611-5020	5	200
1611-5025	5	250
1611-5030	5	300
1611-5035	5	350
1611-5040	5	400
1611-5045	5	450
1611-5050	5	500

Others



REF	Description
1120-0550A	Torx Fixation Nut



REF	Description
1606-0170	Lock Block